

Product information



Polyclonal anti-human γ -Synuclein antibody

Cat. No. IBPGS0606

Size : 100 μ l

Immunogen: Recombinant human γ -Synuclein purified from *E. coli*

Host : Rabbit

Description: Synucleins are small, soluble proteins expressed primarily in neural tissue and in certain tumors. The family includes three known proteins: α -synuclein, β -synuclein, and γ -synuclein. All synucleins have in common a highly conserved α -helical lipid-binding motif with similarity to the class-A2 lipid-binding domains of the exchangeable apolipoproteins. Although they are homologous, each synuclein is encoded by a different gene on chromosomes 4q21.3-q22. γ -Synuclein (also called BCSG-1) is abnormally expressed in a high percentage of tumor tissues of diversified cancer types, including liver, esophagus, colon, gastric, lung, prostate, cervical, and breast cancer.

Specificity: This antibody is specific for γ -synuclein and does not cross-react with α - and β -synuclein.

Form: Liquid. In Phosphate-Buffered Saline (pH 7.4) with 0.02% thimerosal

Preparation and Storage: The antibody was purified from rabbit whole serum by protein-A affinity chromatography. It can be stored at 4°C for up to one month, or at -20°C for long term storage. Avoid repeated freezing and thawing cycles.

Usage: The antibody has been tested by ELISA and Western blot analysis to assure specificity and reactivity. Since application varies, however, each investigator should titrate the reagent to obtain optimal results. Recommended dilution ranges for Western blot analysis is 1:500 ~ 1:2,000

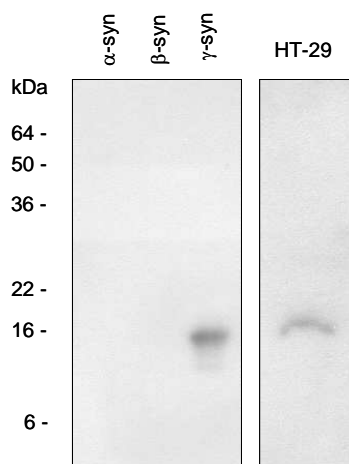
Recommended starting dilution is 1:1,000.

WARNING: THIS PRODUCT IS NOT INTENDED OR APPROVED FOR HUMAN, DIAGNOSTICS OR VETERINARY USE. USE OF THIS PRODUCT FOR HUMAN OR ANIMAL TESTING IS EXTREMELY HAZARDOUS AND MAY RESULT IN DISEASE, SEVERE INJURY, OR DEATH.

Product information



Application: ELISA, Western blot



Western blot analysis

The recombinant synuclein family (α -, β - and γ -) and the extracts of HT-29 (colon adenocarcinoma) cells were resolved by SDS-PAGE, transferred to PVDF membrane and probed with polyclonal anti-human γ -synuclein (1:1,000). Proteins were visualized using a goat anti-rabbit secondary antibody conjugated to HRP and the ECL detection system.

General references : Liu H. *et al.* (2005) *Cancer Res.* 65, 7635-7643

Ji. *et al.* (1997)) *Cancer Res.* 57, 759-764

George, J.M. (2001) *Genome Biol.* 3, 3002.1-3002.6

WARNING: THIS PRODUCT IS NOT INTENDED OR APPROVED FOR HUMAN, DIAGNOSTICS OR VETERINARY USE. USE OF THIS PRODUCT FOR HUMAN OR ANIMAL TESTING IS EXTREMELY HAZARDOUS AND MAY RESULT IN DISEASE, SEVERE INJURY, OR DEATH.