

Monoclonal anti-human Visfatin antibody (clone 4D5)

Mouse IgG₁, κ

Cat. No. IBAVI0816

Immunogen: Recombinant human Visfatin (1-491aa) purified from *E. coli*

NCBI Accession No.: NP_005737

Isotype: Mouse IgG₁ heavy chain and κ light chain

Clone: Anti-human Visfatin mAb, clone 4D5, is derived from hybridization of mouse F0 myeloma cells with spleen cells from BALB/c mice immunized with a recombinant human Visfatin protein.

Description: Visfatin is pre-B cell colony-enhancing factor 1(PBEF), which is predominantly secreted from visceral adipose tissue both in humans and mice. This protein has also been reported to be a cytokine (PBEF) that promotes B cell maturation and inhibits neutrophil apoptosis, or a visceral-fat derived hormone that acts by binding and activating the insulin receptor.

Concentration: 1mg/ml

Form: Liquid. Supplied in Phosphate-Buffered Saline (pH 7.4) with 0.02% Sodium Azide, 10% Glycerol

Storage: Can be stored at +4°C. For long term storage, aliquot and store at -20°C. Avoid repeated freezing and thawing cycles.

Usage: The antibody has been tested by ELISA, Western blot analysis and ICC/IF to assure specificity and reactivity. Since application varies, however, each investigation should be titrated by the reagent to obtain optimal results. Recommended dilution range for Western blot analysis is 1:1,000~ 2,000.

Application: ELISA, WB, ICC/IF

For research use only. This product is not intended or approved for human, diagnostics or veterinary use.



Manufactured for:

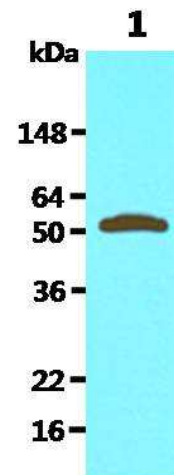
Immuno-Biological Laboratories, Inc. (IBL-America)
8201 Central Ave. NE, Suite P, Minneapolis, Minnesota 55432, USA
Phone: (888) 523-1246 Fax.: (763) 780-2988
Email: info@ibl-america.com Web: www.ibl-america.com

Product information

Western blot analysis

The cell lysates were resolved by SDS-PAGE, transferred to PVDF membrane and probed with anti-human Visfatin (1:1000). Proteins were visualized using a goat anti-mouse secondary antibody conjugated to HRP and an ECL detection system.

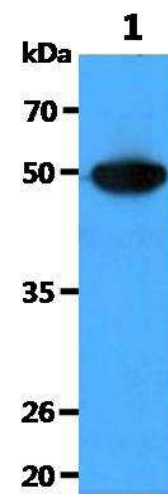
Lane 1. : 293T cell lysate (30ug)



Western blot analysis

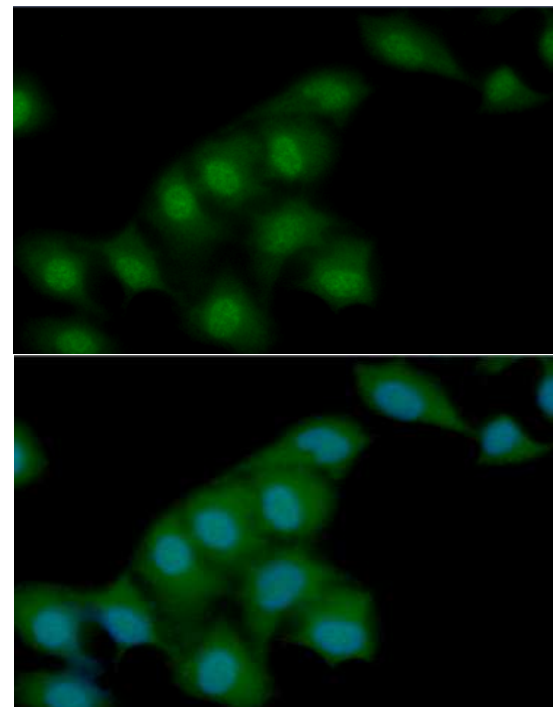
The cell lysates were resolved by SDS-PAGE, transferred to PVDF membrane and probed with anti-human Visfatin (1:1000). Proteins were visualized using a goat anti-mouse secondary antibody conjugated to HRP and an ECL detection system.

Lane 1. : SW480 cell lysate (40ug)



ICC/IF analysis

ICC/IF analysis of Visfatin in HeLa cells line, stained with DAPI (Blue) for nucleus staining and monoclonal anti-human Visfatin antibody (1:100) with goat anti-mouse IgG-Alexa fluor 488 conjugate (Green).



For research use only. This product is not intended or approved for human, diagnostics or veterinary use.

Product information

General references: Stephens JM., *et al.* (2006) *Curr Opin Lipidol.* **17**: 128-131.
Hug C., *et al.* (2005) *Science.* **307**: 366-367.

For research use only. This product is not intended or approved for human, diagnostics or veterinary use.



Manufactured for:
Immuno-Biological Laboratories, Inc. (IBL-America)
8201 Central Ave. NE, Suite P, Minneapolis, Minnesota 55432, USA
Phone: (888) 523-1246 Fax.: (763) 780-2988
Email: info@ibl-america.com Web: www.ibl-america.com