

Monoclonal anti-human Vaspin antibody (clone 1C4)

Mouse IgG₁, κ

Cat. No. IBAVA0721

Immunogen: Recombinant human Vaspin (21-414aa) purified from *E. coli*

NCBI Accession No.: NM_173850

Isotype: Mouse IgG₁ heavy chain and κ light chain

Clone: Anti-human Vaspin mAb, clone 1C4, is derived from hybridization of mouse SP2/O myeloma cells with spleen cells from BALB/c mice immunized with a recombinant human Vaspin protein.

Description: Vaspin (visceral adipose-specific SERPIN), a newly identified adipokine, which is a member of serine protease inhibitor family. Vaspin is also a unique insulin sensitizing adipocytokine in obesity. A recent publication indicates that induction of human vaspin mRNA expression in adipose tissue is regulated in a fat depot-specific manner and could be associated with parameters of obesity, insulin resistance, and glucose metabolism.

Concentration: 1mg/ml

Form: Liquid. In Phosphate-Buffered Saline (pH 7.4) with 0.02% Sodium Azide, 10% Glycerol.

Storage: Can be stored at +4°C. For long term storage, aliquot and store at -20°C. Avoid repeated freezing and thawing cycles.

Usage: The antibody has been tested by ELISA and Western blot analysis to assure specificity and reactivity. Since application varies, however, each investigation should be titrated by the reagent to obtain optimal results. Recommended dilution range for Western blot analysis is 1:1,000 ~ 3,000. Recommended starting dilution is 1:2,000.

For research use only. This product is not intended or approved for human, diagnostics or veterinary use.



Manufactured for:

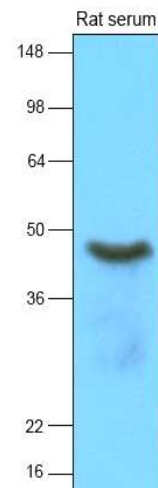
Immuno-Biological Laboratories, Inc. (IBL-America)
8201 Central Ave. NE, Suite P, Minneapolis, Minnesota 55432, USA
Phone: (888) 523-1246 Fax.: (763) 780-2988
Email: info@ibl-america.com Web: www.ibl-america.com

Product information

Application: ELISA, WB

Western blot analysis

Rat serum (15ug) was resolved by SDS-PAGE, transferred to NC membrane and probed with anti-human Vaspin (1:2000). Proteins were visualized using a goat anti-mouse secondary antibody conjugated to HRP and an ECL detection system.



General references: Hida K , *et al.*, (2005) *Natl Acad Sci* 102(30):10610-5
Kloting N, *et al.*, (2006) *Biochem* 339(1):430-6

For research use only. This product is not intended or approved for human, diagnostics or veterinary use.