

Monoclonal anti-human UBE2L6 antibody (clone K1H3)

Mouse IgG_{2b}, κ

Cat. No. IBAUB0907

Immunogen: Recombinant human UBE2L6 (1-152aa) purified from *E. coli*

NCBI Accession No.: NP_004214

Isotype: Mouse IgG_{2b} heavy chain and κ light chain

Clone: Anti-human UBE2L6 mAb, clone K1H3, is derived from hybridization of mouse F0 myeloma cells with spleen cells from BALB/c mice immunized with a recombinant human UBE2L6 protein.

Description: Ubiquitin-conjugating enzyme E2L6 (UBE2L6), also known as UbcH8, is a member of the E2 ubiquitin-conjugating enzyme family. The modification of proteins with ubiquitin is an important cellular mechanism for targeting abnormal or short-lived proteins for degradation. Ubiquitination of a protein substrate requires the concerted action of 3 classes of enzymes: E1 ubiquitin-activating enzymes, E2 ubiquitin-conjugating enzymes, and E3 ubiquitin protein ligases. The E2 ubiquitin-conjugating enzyme is highly similar in primary structure to the enzyme encoded by UBE2L3 gene.

Concentration: 1mg/ml

Form: Liquid. In Phosphate-Buffered Saline (pH 7.4) with 0.02% Sodium Azide, 10% Glycerol.

Storage: Can be stored at +4°C. For long term storage, aliquot and store at -20°C. Avoid repeated freezing and thawing cycles.

Usage: The antibody has been tested by ELISA, Western blot analysis, Flow cytometry and ICC/IF immunohistochemistry to assure specificity and reactivity. Since application varies, however, each investigation should be titrated by the reagent to obtain optimal results.

Application: ELISA, WB, IHC, Flow cytometry, ICC/IF

For research use only. This product is not intended or approved for human, diagnostics or veterinary use.



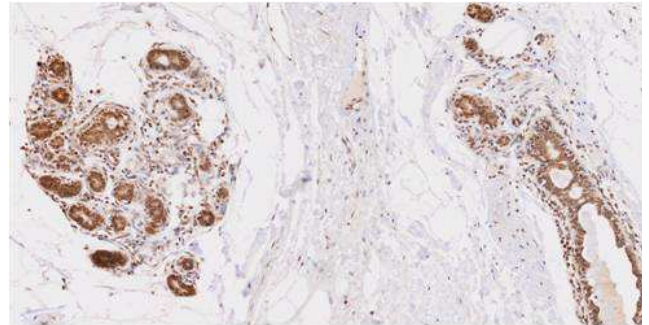
Manufactured for:

Immuno-Biological Laboratories, Inc. (IBL-America)
8201 Central Ave. NE, Suite P, Minneapolis, Minnesota 55432, USA
Phone: (888) 523-1246 Fax.: (763) 780-2988
Email: info@ibl-america.com Web: www.ibl-america.com

Product information

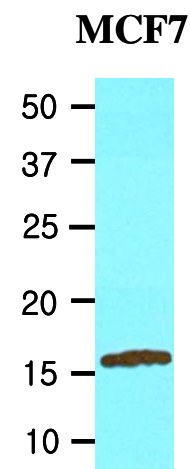
Immunohistochemistry

Paraffin embedded sections of human breast lobule tissue were incubated with anti-human UBE2L6 (1:50) for 2 hours at room temperature. Antigen retrieval was performed in 0.1M sodium citrate buffer and detected using Diaminobenzidine (DAB).



Western blot analysis

Cell lysates of MCF7 (20ug) were resolved by SDS-PAGE, transferred to NC membrane and probed with anti-human UBE2L6 (1:2000). Proteins were visualized using a goat anti-mouse secondary antibody conjugated to HRP and an ECL detection system.

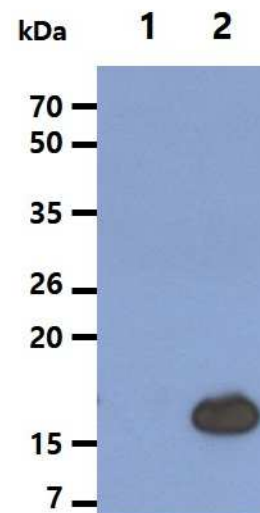


Western blot analysis

The Cell lysates (5ug) were resolved by SDS-PAGE, transferred to PVDF membrane and probed with anti-human UBE2L6 antibody (1:2000). Proteins were visualized using a goat anti-mouse secondary antibody conjugated to HRP and an ECL detection system.

Lane 1.: 293T cell lysate

Lane 2.: UBE2L6 Transfected 293T cell lysate



For research use only. This product is not intended or approved for human, diagnostics or veterinary use.

Product information

Western blot analysis

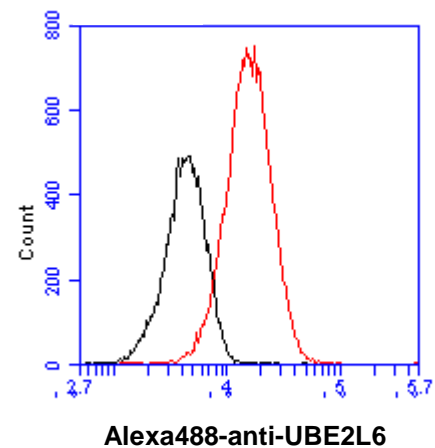
The Cell lysate (20ug) were resolved by SDS-PAGE, transferred to PVDF membrane and probed with anti-human UBE2L6 antibody (1:2000). Proteins were visualized using a goat anti-mouse secondary antibody conjugated to HRP and an ECL detection system.

Lane 1.: Jurkat cell lysate



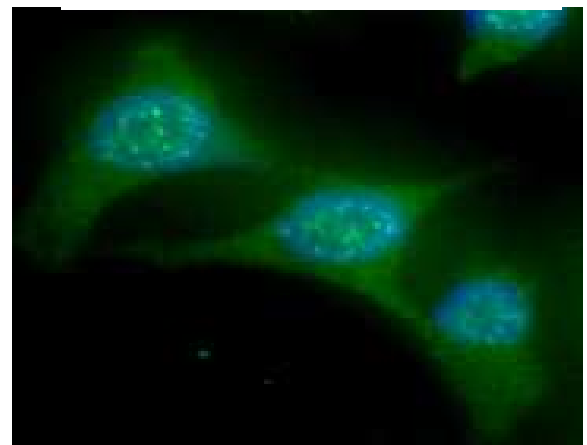
Flow cytometry

Flow cytometry analysis of UBE2L6 in HeLa cell line, staining at 2-5ug for 1×10^6 cells (red line). The secondary antibody used goat anti-mouse IgG Alexa fluor 488 conjugate. Isotype control antibody was mouse IgG (black line).



ICC/IF analysis

ICC/IF analysis of UBE2L6 in HeLa cells line, stained with DAPI (Blue) for nucleus staining and monoclonal anti-human UBE2L6 antibody (1:100) with goat anti-mouse IgG-Alexa fluor 488 conjugate (Green).



General references: Ardley HC., *et al.* (2000) *Cytogenet Cell Genet.* **89(1-2)**: 137-140.
Movnihan TP., *et al.* (1999) *J Biol Chem.* **274(43)**:30963-30968.
Kumar S., *et al.* (1997) *J Biol Chem.* **272(21)**: 13548-13554.

For research use only. This product is not intended or approved for human, diagnostics or veterinary use.