

Monoclonal anti-human Tollip antibody (clone k1B17)

Mouse IgG_{2a}, κ

Cat. No. IBATO0918

Immunogen: Recombinant human Tollip (61-274aa) purified from *E. coli*

NCBI Accession No.: NP_061882

Isotype: Mouse IgG_{2a} heavy chain and κ light chain

Clone: Anti-human Tollip mAb, clone k1B17, is derived from hybridization of mouse F0 myeloma cells with spleen cells from BALB/c mice immunized with a recombinant human Tollip protein.

Description: Toll interacting protein, also known as Tollip, is an inhibitory adaptor protein within the signaling pathway of IL-1 and Toll-like receptors (TLR). The Toll-like receptors are essential transmembrane signaling receptors of the innate immune system that alert the host to the presence of a microbial invader. Tollip recruits IRAK1 to the IL-1 receptor complex and inhibits IRAK1 phosphorylation and kinase activity.

Concentration: 1 mg/ml

Form: Liquid. In Phosphate-Buffered Saline (pH 7.4) with 0.02% Sodium Azide, 10% Glycerol

Storage: Can be stored at +4°C. For long term storage, aliquot and store at -20°C. Avoid repeated freezing and thawing cycles.

Usage: The antibody has been tested by ELISA, Western blot analysis, ICC/IF and Flow cytometry to assure specificity and reactivity. Since application varies, however, each investigation should be titrated by the reagent to obtain optimal results.

Application: ELISA, WB, ICC/IF, Flow cytometry

For research use only. This product is not intended or approved for human, diagnostics or veterinary use.



Manufactured for:

Immuno-Biological Laboratories, Inc. (IBL-America)
8201 Central Ave. NE, Suite P, Minneapolis, Minnesota 55432, USA
Phone: (888) 523-1246 Fax: (763) 780-2988
Email: info@ibl-america.com Web: www.ibl-america.com

Product information

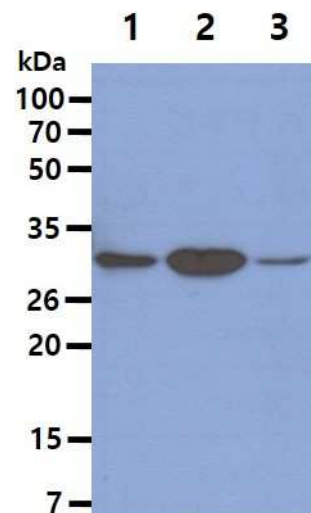
Western blot analysis

The Cell lysates (40ug) were resolved by SDS-PAGE, transferred to PVDF membrane and probed with anti-human Tollip antibody (1:1000). Proteins were visualized using a goat anti-mouse secondary antibody conjugated to HRP and an ECL detection system.

Lane 1. : Jurkat cell lysate

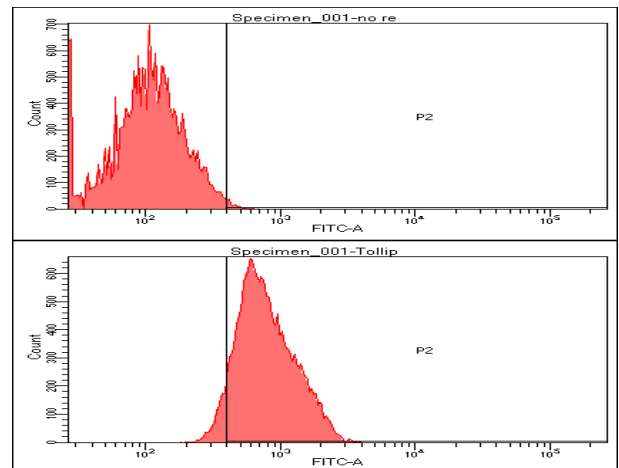
Lane 2. : HepG2 cell lysate

Lane 3. : HeLa cell lysate



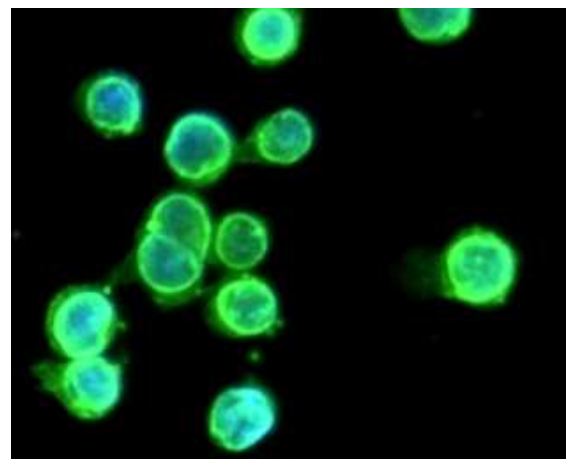
Flow cytometry

Flow cytometry analysis of Tollip in Hep3B cell line, staining at 2-5ug for 1×10^6 cells. The secondary antibody used goat anti-mouse IgG Alexa fluor 488 conjugate.



ICC/IF analysis

ICC/IF analysis of Tollip in THP-1 cells line, stained with DAPI (Blue) for nucleus staining and monoclonal anti-human Tollip antibody (1:100) with goat anti-mouse IgG-Alexa fluor 488 conjugate (Green).



- General references:** Ciarrocchi A., *et al.* (2009) *Published online.* **4(2):** e4404.
 Didierlaurent A., *et al.* (2006) *Mol Cell Biol.* **26(3):** 735-742.
 Opal SM., *et al.* (2002) *Crit Care.* **6(2):** 125-136.
 Burns K., *et al.* (2000) *Nat Cell Biol.* **2(6):** 346-351.

For research use only. This product is not intended or approved for human, diagnostics or veterinary use.