

## Monoclonal anti-human Leptin antibody (clone AT7E10)

Mouse IgG<sub>2b</sub>, κ

Cat. No. IBATGA0460

**Immunogen:** Recombinant human Leptin (22-167aa) purified from *E. coli*.

**NCBI Accession No.:** NP\_000221

**Isotype:** Mouse IgG<sub>2b</sub> heavy chain and κ light chain

**Clone:** Anti-human Leptin mAb, clone AT7E10, is derived from hybridization of mouse F0 myeloma cells with spleen cells from BALB/c mice immunized with a recombinant human Leptin protein.

**Description:** Human leptin is a 16-kDa nonglycosylated hormone that is produced in mature adipocytes. Leptin acts primarily in the hypothalamus to reduce food intake and body weight. In ob/ob mice, the gene encoding leptin is mutated, resulting in morbid obesity and associated abnormalities, including hyperphagia, hypothermia, diabetes and infertility. The function of leptin in regulating appetite and metabolism, as well as the possibility of using leptin as a therapeutic agent, are currently under intense investigation.

**Concentration:** 1mg/ml

**Form:** Liquid. In Phosphate-Buffered Saline (pH 7.4) with 0.02% Sodium Azide, 10% Glycerol

**Storage:** Can be stored at +4°C. For long term storage, aliquot and store at -20°C. Avoid repeated freezing and thawing cycles.

**Usage:** The antibody has been tested by ELISA, Western blot analysis and ICC/IF to assure specificity and reactivity. Since application varies, however, each investigation should be titrated by the reagent to obtain optimal results.

**Application:** ELISA, WB, ICC/IF

---

**For research use only. This product is not intended or approved for human, diagnostics or veterinary use.**



Manufactured for:

Immuno-Biological Laboratories, Inc. (IBL-America)  
8201 Central Ave. NE, Suite P, Minneapolis, Minnesota 55432, USA  
Phone: (888) 523-1246 Fax.: (763) 780-2988  
Email: [info@ibl-america.com](mailto:info@ibl-america.com) Web: [www.ibl-america.com](http://www.ibl-america.com)

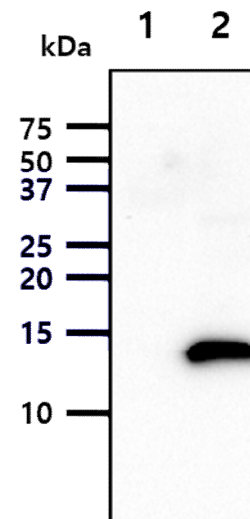
# Product information

## Western blot analysis

The cell lysates (40ug) were resolved by SDS-PAGE, transferred to PVDF membrane and probed with anti-human Leptin antibody (1:1000). Proteins were visualized using a goat anti-mouse secondary antibody conjugated to HRP and an ECL detection system.

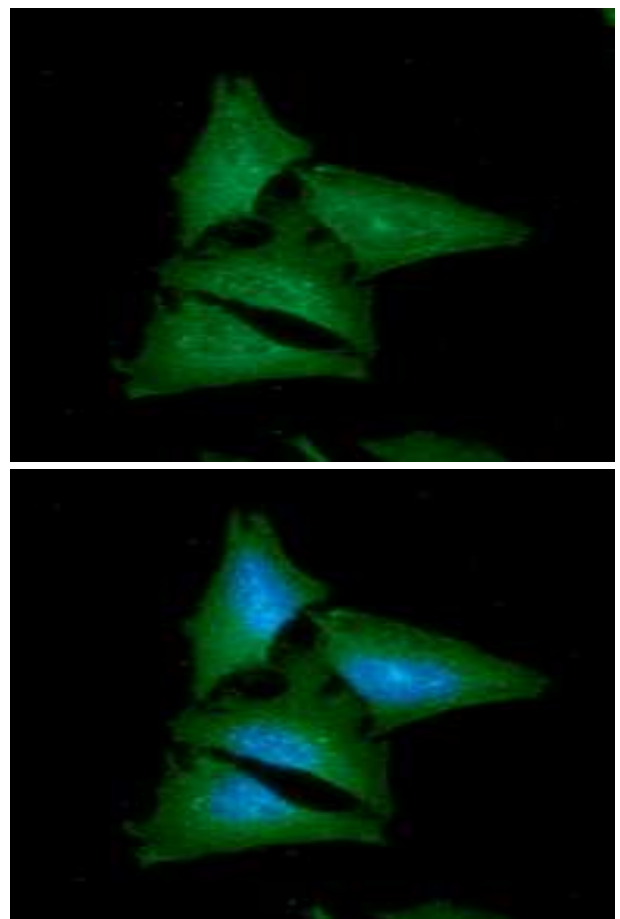
Lane 1.: 293T cell lysate

Lane 2.: Leptin transfected 293T cell lysate



## ICC/IF analysis

ICC/IF analysis of Leptin in HeLa cells line, stained with DAPI (Blue) for nucleus staining and monoclonal anti-human Leptin antibody (1:100) with goat anti-mouse IgG-Alexa fluor 488 conjugate (Green)



**For research use only. This product is not intended or approved for human, diagnostics or veterinary use.**

# Product information

---

Anini Y., *et al.* (2003) *Diabetes*. **52(2)**: 252-259.

**General references:**

Jeong KJ., *et al.* (1999) *Appl Environ Microbiol*. **65(7)**: 3027-32.

Hyogo H., *et al.* (2002) *J. Biol. Chem.* **277(37)**: 34117-34124.

---

**For research use only. This product is not intended or approved for human, diagnostics or veterinary use.**



*Manufactured for:*

Immuno-Biological Laboratories, Inc. (IBL-America)  
8201 Central Ave. NE, Suite P, Minneapolis, Minnesota 55432, USA  
Phone: (888) 523-1246 Fax.: (763) 780-2988  
Email: [info@ibl-america.com](mailto:info@ibl-america.com) Web: [www.ibl-america.com](http://www.ibl-america.com)