

Monoclonal anti-human BPGM antibody (clone AT2E11)

Mouse IgG_{2a}, κ

Cat. No. IBATGA0455

Immunogen: Recombinant human BPGM (1-259aa) purified from *E. coli*.

NCBI Accession No.: NP_001715

Isotype: Mouse IgG_{2a} heavy chain and κ light chain

Clone: Anti-human BPGM mAb, clone AT2E11, is derived from hybridization of mouse F0 myeloma cells with spleen cells from BALB/c mice immunized with a recombinant human BPGM protein.

Description: Bisphosphoglycerate mutase (BPGM) is an enzyme unique to erythrocytes and placental cells. This protein plays a major role in regulating hemoglobin oxygen affinity as a consequence of controlling 2,3-BPG concentration. It is responsible for the catalytic synthesis of 2,3-Bisphosphoglycerate (2,3-BPG) from 1,3-BPG. BPGM also has a mutase and a phosphatase function, but these are much less active.

Concentration: 1mg/ml

Form: Liquid. In Phosphate-Buffered Saline (pH 7.4) with 0.02% Sodium Azide, 10% Glycerol

Storage: Can be stored at +4°C. For long term storage, aliquot and store at -20°C. Avoid repeated freezing and thawing cycles.

Usage: The antibody has been tested by ELISA, Western blot analysis, Flow cytometry and ICC/IF to assure specificity and reactivity. Since application varies, however, each investigation should be titrated by the reagent to obtain optimal results.

Application: ELISA, WB, Flow cytometry, ICC/IF

For research use only. This product is not intended or approved for human, diagnostics or veterinary use.



Manufactured for:

Immuno-Biological Laboratories, Inc. (IBL-America)
8201 Central Ave. NE, Suite P, Minneapolis, Minnesota 55432, USA

Phone: (888) 523-1246

Fax.: (763) 780-2988

Email: info@ibl-america.com

Web: www.ibl-america.com

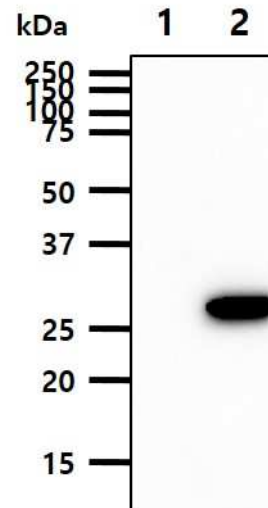
Product information

Western blot analysis

The cell lysates (10ug) were resolved by SDS-PAGE, transferred to PVDF membrane and probed with anti-human BPGM antibody (1:1000). Proteins were visualized using a goat anti-mouse secondary antibody conjugated to HRP and an ECL detection system.

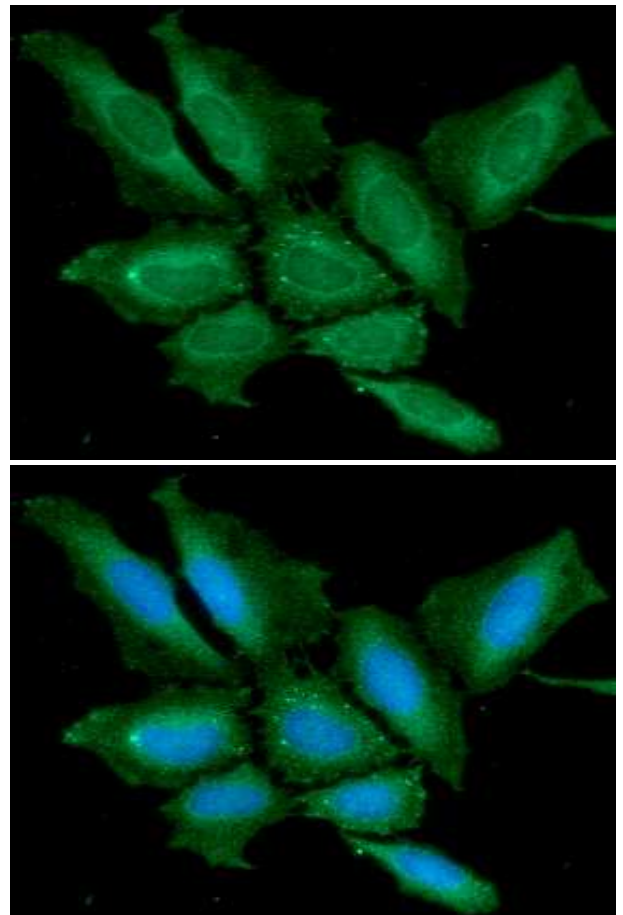
Lane 1.: 293T cell lysate

Lane 2.: BPGM transfected 293T cell lysate



ICC/IF analysis

ICC/IF analysis of BPGM in HeLa cells line, stained with DAPI (Blue) for nucleus staining and monoclonal anti-human BPGM antibody (1:100) with goat anti-mouse IgG-Alexa fluor 488 conjugate (Green).

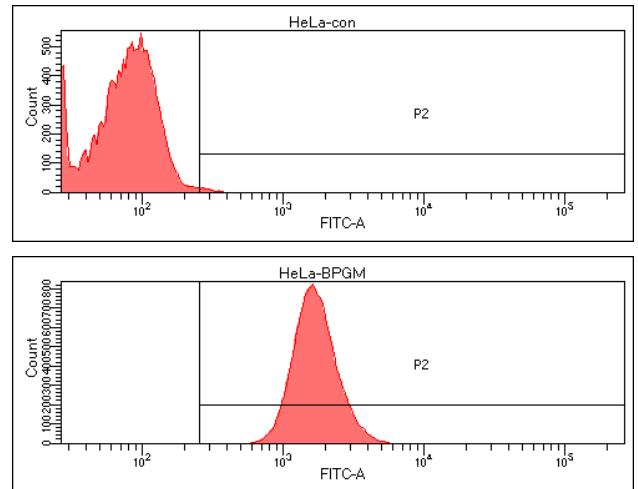


For research use only. This product is not intended or approved for human, diagnostics or veterinary use.

Product information

Flow cytometry

Flow cytometry analysis of BPGM in HeLa cell line, staining at 2-5ug for 1×10^6 cells (red line). The secondary antibody used goat anti-mouse IgG Alexa fluor 488 conjugate. Isotype control antibody was mouse IgG (black line).



General references: Pritlove DC., *et al.* (2006) *Placenta*. **27(8)**: 924-7.
Wang Y., *et al.* (2006) *J. Biol. Chem.* **281(51)**: 39642-8.

For research use only. This product is not intended or approved for human, diagnostics or veterinary use.



Manufactured for:

Immuno-Biological Laboratories, Inc. (IBL-America)
8201 Central Ave. NE, Suite P, Minneapolis, Minnesota 55432, USA
Phone: (888) 523-1246 Fax.: (763) 780-2988
Email: info@ibl-america.com Web: www.ibl-america.com