

Monoclonal anti-human ALDH2 antibody (clone AT2C10)

Mouse IgG_{2a}, κ

Cat. No. IBATGA0450

Immunogen: Recombinant human ALDH2 (18-517aa) purified from *E. coli*

NCBI Accession No.: NP_000681

Isotype: Mouse IgG_{2a} heavy chain and κ light chain

Clone: Anti-human ALDH2 mAb, clone AT2C10, is derived from hybridization of mouse F0 myeloma cells with spleen cells from BALB/c mice immunized with a recombinant human ALDH2 protein..

Description: ALDH2 (Aldehyde dehydrogenase 2 family) belongs to the aldehyde dehydrogenase family which catalyze the chemical transformation from acetaldehyde to acetic acid and is the second enzyme of the major oxidative pathway of alcohol metabolism. There are two major liver isoforms of this enzyme, cytosolic and mitochondrial, and they can be also distinguished by their electrophoretic mobilities, kinetic properties, and subcellular localizations.

Concentration: 1 mg/ml

Form: Liquid. In Phosphate-Buffered Saline (pH 7.4) with 0.02% Sodium Azide, 10% Glycerol

Storage: Can be stored at +4C. For long term storage, aliquot and store at -20C. Avoid repeated freezing and thawing cycles.

Usage: The antibody has been tested by ELISA, Western blot analysis and ICC/IF to assure specificity and reactivity. Since application varies, however, each investigation should be titrated by the reagent to obtain optimal results.

Application: ELISA, WB, ICC/IF

For research use only. This product is not intended or approved for human, diagnostics or veterinary use.



Manufactured for:

Immuno-Biological Laboratories, Inc. (IBL-America)
8201 Central Ave. NE, Suite P, Minneapolis, Minnesota 55432, USA
Phone: (888) 523-1246 Fax.: (763) 780-2988
Email: info@ibl-america.com Web: www.ibl-america.com

Product information

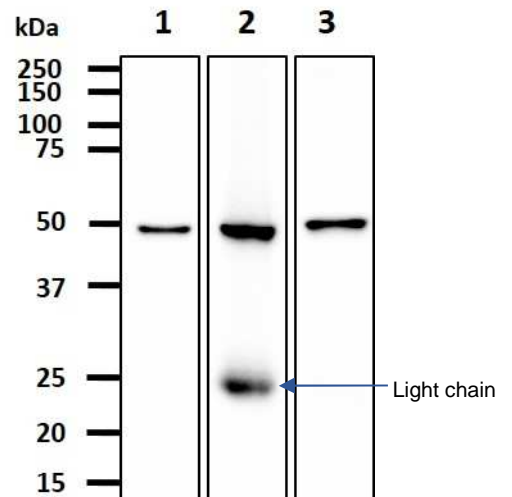
Western blot analysis

The cell and tissue lysates (40ug) were resolved by SDS-PAGE, transferred to PVDF membrane and probed with anti-human ALDH2 antibody (1:1000). Proteins were visualized using a goat anti-mouse secondary antibody conjugated to HRP and an ECL detection system.

Lane 1. : HepG2 cell lysate

Lane 2. : Mouse liver tissue lysate

Lane 3. : Mouse lung tissue lysate

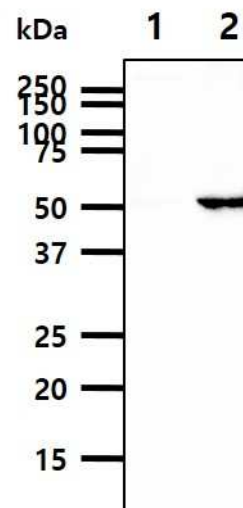


Western blot analysis

The cell lysates (40ug) were resolved by SDS-PAGE, transferred to PVDF membrane and probed with anti-human ALDH2 antibody (1:500). Proteins were visualized using a goat anti-mouse secondary antibody conjugated to HRP and an ECL detection system.

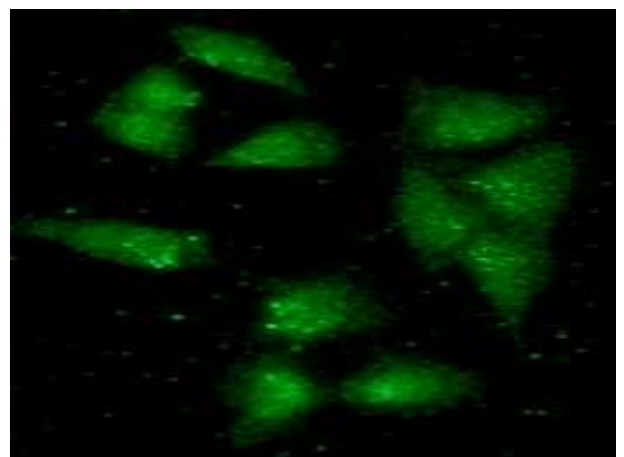
Lane 1. : 293T cell lysate

Lane 2. : ALDH2 transfected 293T cell lysate



ICC/IF analysis

ICC/IF analysis of ALDH2 in A549 cells line, stained with monoclonal anti-human ALDH2 antibody (1:100) with goat anti-mouse IgG-Alexa fluor 488 conjugate (Green).



For research use only. This product is not intended or approved for human, diagnostics or veterinary use.

Product information

General references: Crabb DW., *et al.* (1989) *J Clin Invest.* **83(1)**: 314-6.
Feng Liu., *et al.* (2002) *Plant Physiol.* **130(4)**: 1657-1674.

For research use only. This product is not intended or approved for human, diagnostics or veterinary use.



Manufactured for:

Immuno-Biological Laboratories, Inc. (IBL-America)
8201 Central Ave. NE, Suite P, Minneapolis, Minnesota 55432, USA
Phone: (888) 523-1246 Fax.: (763) 780-2988
Email: info@ibl-america.com Web: www.ibl-america.com