

Monoclonal anti-human CALB2 antibody (clone AT5C5)

Mouse IgG₁, κ

Cat. No. IBATGA0435

Immunogen: Recombinant human CALB2 (1-271aa) purified from *E. coli*

NCBI Accession No.: AAH15484

Isotype: Mouse IgG₁ heavy chain and κ light chain

Clone: Anti-human CALB2 mAb, clone AT5C5, is derived from hybridization of mouse F0 myeloma cells with spleen cells from BALB/c mice immunized with a recombinant human CALB2 protein.

Description: CALB2 is an intracellular calcium-binding protein belonging to the troponin C superfamily. Members of this protein family have six EF-hand domains which bind calcium. This protein plays a role in diverse cellular functions, including message targeting and intracellular calcium buffering. It also functions as a modulator of neuronal excitability, and is a diagnostic marker for some human diseases, including Hirschsprung disease and some cancers.

Concentration: 1 mg/ml

Form: Liquid. In Phosphate-Buffered Saline (pH 7.4) with 0.02% Sodium Azide, 10% Glycerol

Storage: Can be stored at +4C. For long term storage, aliquot and store at -20C. Avoid repeated freezing and thawing cycles.

Usage: The antibody has been tested by ELISA, Western blot analysis, Flow cytometry and ICC/IF to assure specificity and reactivity. Since application varies, however, each investigation should be titrated by the reagent to obtain optimal results.

Application: ELISA, WB, Flow cytometry, ICC/IF

For research use only. This product is not intended or approved for human, diagnostics or veterinary use.



Manufactured for:
Immuno-Biological Laboratories, Inc. (IBL-America)
8201 Central Ave. NE, Suite P, Minneapolis, Minnesota 55432, USA
Phone: (888) 523-1246 Fax: (763) 780-2988
Email: info@ibl-america.com Web: www.ibl-america.com

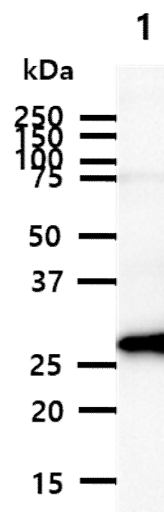
Product information



Western blot analysis

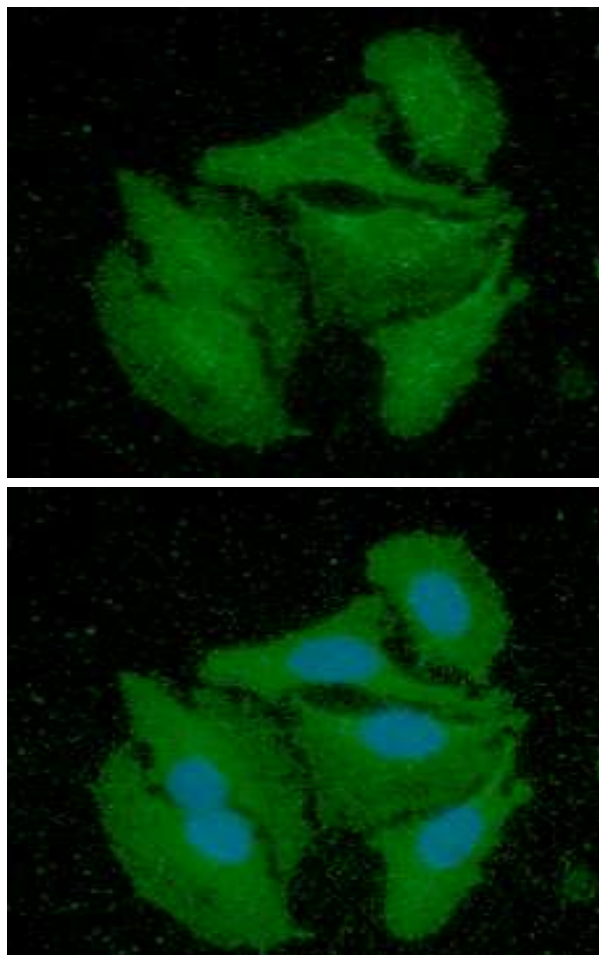
The cell and tissue lysate (40ug) were resolved by SDS-PAGE, transferred to PVDF membrane and probed with anti-human CALB2 antibody (1:500). Proteins were visualized using a goat anti-mouse secondary antibody conjugated to HRP and an ECL detection system.

Lane 1.: Mouse brain lysate



ICC/IF analysis

ICC/IF analysis of CALB2 in HeLa cells line, stained with DAPI (Blue) for nucleus staining and monoclonal anti-human CALB2 antibody (1:100) with goat anti-mouse IgG-Alexa fluor 488 conjugate (Green).



For research use only. This product is not intended or approved for human, diagnostics or veterinary use.

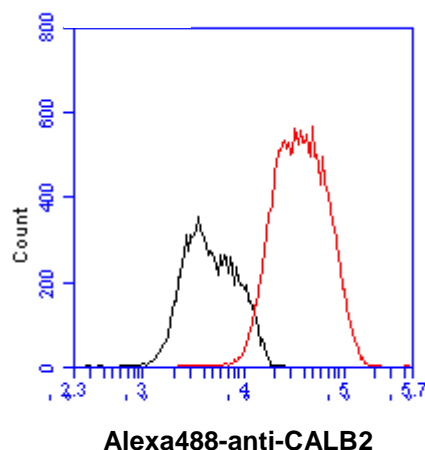


Manufactured for:
Immuno-Biological Laboratories, Inc. (IBL-America)
8201 Central Ave. NE, Suite P, Minneapolis, Minnesota 55432, USA
Phone: (888) 523-1246 Fax: (763) 780-2988
Email: info@ibl-america.com Web: www.ibl-america.com

Product information

Flow cytometry

Flow cytometry analysis of CALB2 in 293T cell line, staining at 2-5ug for 1×10^6 cells (red line). The secondary antibody used goat anti-mouse IgG Alexa fluor 488 conjugate. Isotype control antibody was mouse IgG (black line).



General references: Rogers JH., *et al.* (1987) *J Cell Biol.* **105(3)**: 1343-1353.
Dreher B., *et al.* (1996) *J. Comp. Neurol.* **376(2)**: 223-40.

For research use only. This product is not intended or approved for human, diagnostics or veterinary use.