

Monoclonal anti-human S100A11 antibody (clone AT20D11)

Mouse IgG₁, κ

Cat. No. IBATGA0434

Immunogen: Recombinant human S100A11 (1-105aa) purified from *E. coli*

NCBI Accession No.: NP_005611

Isotype: Mouse IgG₁ heavy chain and κ light chain

Clone: Anti-human S100A11 mAb, clone AT20D11, is derived from hybridization of mouse F0 myeloma cells with spleen cells from BALB/c mice immunized with a recombinant human S100A11 protein..

Description: S100A11 is a member of the S100 family of proteins containing 2 EF-hand calcium-binding motifs. S100 proteins are localized in the cytoplasm and/or nucleus of a wide range of cells, and involved in the regulation of a number of cellular processes such as cell cycle progression and differentiation. This protein may function in motility, invasion, and tubulin polymerization.

Concentration: 1 mg/ml

Form: Liquid. In Phosphate-Buffered Saline (pH 7.4) with 0.02% Sodium Azide, 10% Glycerol

Storage: Can be stored at +4C. For long term storage, aliquot and store at -20C. Avoid repeated freezing and thawing cycles.

Usage: The antibody has been tested by ELISA, Western blot analysis, Flow cytometry and ICC/IF to assure specificity and reactivity. Since application varies, however, each investigation should be titrated by the reagent to obtain optimal results.

Application: ELISA, WB, Flow cytometry, ICC/IF

For research use only. This product is not intended or approved for human, diagnostics or veterinary use.



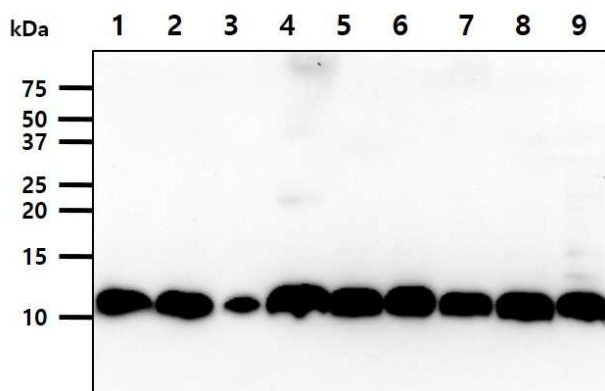
Manufactured for:
Immuno-Biological Laboratories, Inc. (IBL-America)
8201 Central Ave. NE, Suite P, Minneapolis, Minnesota 55432, USA
Phone: (888) 523-1246 Fax.: (763) 780-2988
Email: info@ibl-america.com Web: www.ibl-america.com

Product information

Western blot analysis

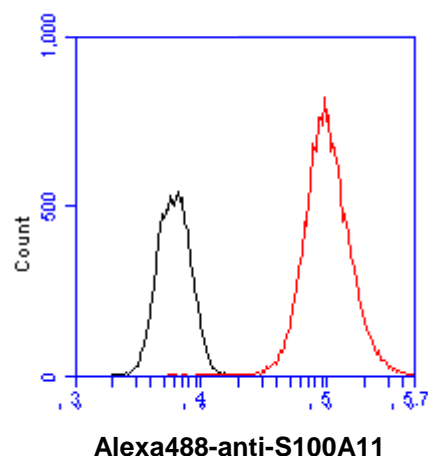
The cell lysates (40ug) were resolved by SDS-PAGE, transferred to PVDF membrane and probed with anti-human S100A11 antibody (1:1000). Proteins were visualized using a goat anti-mouse secondary antibody conjugated to HRP and an ECL detection system.

- Lane 1. : HeLa cell lysate
- Lane 2. : MCF7 cell lysate
- Lane 3. : PC3 cell lysate
- Lane 4. : HaCaT cell lysate
- Lane 5. : THP1 cell lysate
- Lane 6. : U87MG cell lysate
- Lane 7. : A427 cell lysate
- Lane 8. : SK-OV-3 cell lysate
- Lane 9. : A549 cell lysate



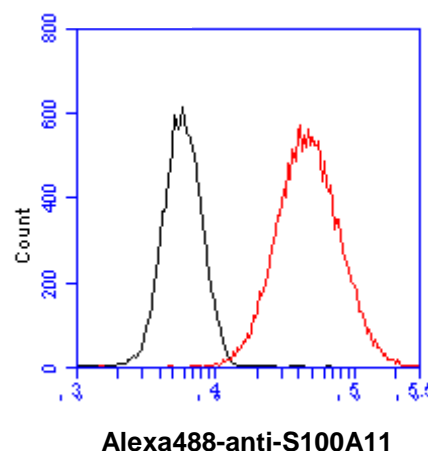
Flow cytometry

Flow cytometry analysis of S100A11 in A549 cell line, staining at 2-5ug for 1×10^6 cells (red line). The secondary antibody used goat anti-mouse IgG Alexa fluor 488 conjugate. Isotype control antibody was mouse IgG (black line).



Flow cytometry

Flow cytometry analysis of S100A11 in HeLa cell line, staining at 2-5ug for 1×10^6 cells (red line). The secondary antibody used goat anti-mouse IgG Alexa fluor 488 conjugate. Isotype control antibody was mouse IgG (black line).

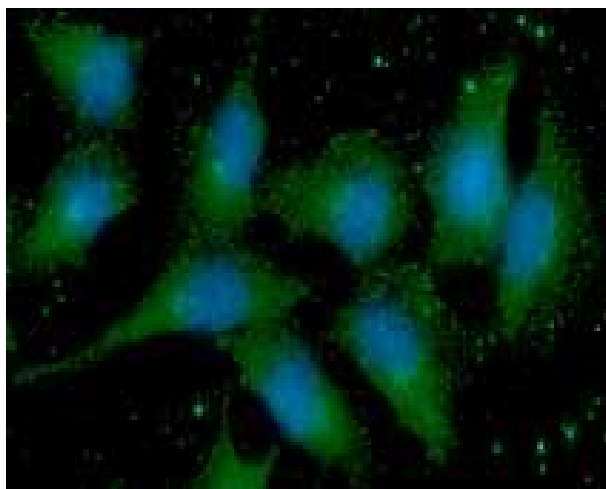


For research use only. This product is not intended or approved for human, diagnostics or veterinary use.

Product information

ICC/IF analysis

ICC/IF analysis of S100A11 in A549 cells line, stained with DAPI (Blue) for nucleus staining and monoclonal anti-human S100A11 antibody (1:100) with goat anti-mouse IgG-Alexa fluor 488 conjugate (Green).



General references: Sakaguchi M., *et al.* (2003) *J Cell Biol.* **163**: 825-35.
Settmacher U., *et al.* (2005) *Int. J. Oncol.* **28**: 195-200.

For research use only. This product is not intended or approved for human, diagnostics or veterinary use.