

Monoclonal anti-human DECR1 antibody (clone AT3B2)

Mouse IgG_{2b}, κ

Cat. No. IBATGA0431

Immunogen: Recombinant human DECR1 (35-335aa) purified from *E. coli*

NCBI Accession No.: NP_001350

Isotype: Mouse IgG_{2b} heavy chain and κ light chain

Clone: Anti-human DECR1 mAb, clone AT3B2, is derived from hybridization of mouse F0 myeloma cells with spleen cells from BALB/c mice immunized with a recombinant human DECR1 protein.

Description: DECR1 is a mitochondrial protein that exists as a homotetramer and belongs to the family of short-chain dehydrogenases/reductases. It functions as an auxiliary enzyme of beta-oxidation and participates in the metabolism of unsaturated fatty enoyl-CoA esters. Specifically, DECR1 uses NADP⁺ to catalyze the reduction of 2,4-dienoyl-CoA to yield trans-3-enoyl-CoA, which can then be used as an intermediate in the Krebs cycle. Additionally, DECR1 is thought to function as a tumor suppressor, possibly downregulating the expression of Neu and slowing the rate of tumorigenesis.

Concentration: 1 mg/ml

Form: Liquid. In Phosphate-Buffered Saline (pH 7.4) with 0.02% Sodium Azide, 10% Glycerol

Storage: Can be stored at +4°C. For long term storage, aliquot and store at -20°C. Avoid repeated freezing and thawing cycles.

Usage: The antibody has been tested by ELISA, Western blot analysis, Flow cytometry and ICC/IF to assure specificity and reactivity. Since application varies, however, each investigation should be titrated by the reagent to obtain optimal results.

Application: ELISA, WB, Flow cytometry, ICC/IF

For research use only. This product is not intended or approved for human, diagnostics or veterinary use.



Manufactured for:
Immuno-Biological Laboratories, Inc. (IBL-America)
8201 Central Ave. NE, Suite P, Minneapolis, Minnesota 55432, USA
Phone: (888) 523-1246 Fax: (763) 780-2988
Email: info@ibl-america.com Web: www.ibl-america.com

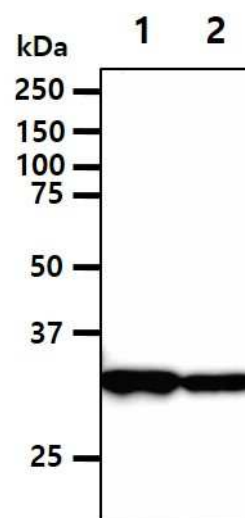
Product information

Western blot analysis

The cell lysates (40ug) were resolved by SDS-PAGE, transferred to PVDF membrane and probed with anti-human DECR1 antibody (1:1000). Proteins were visualized using a goat anti-mouse secondary antibody conjugated to HRP and an ECL detection system.

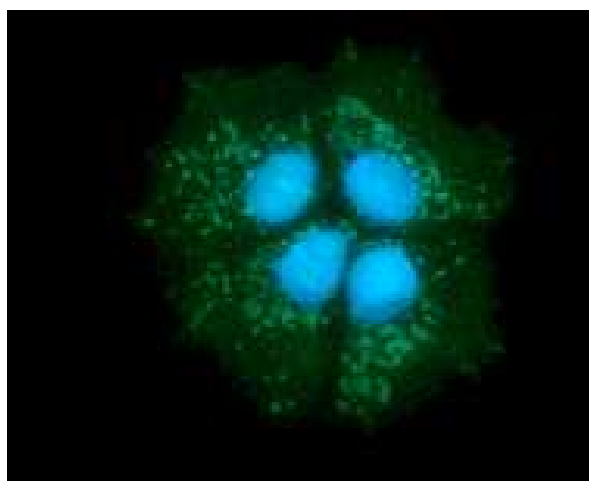
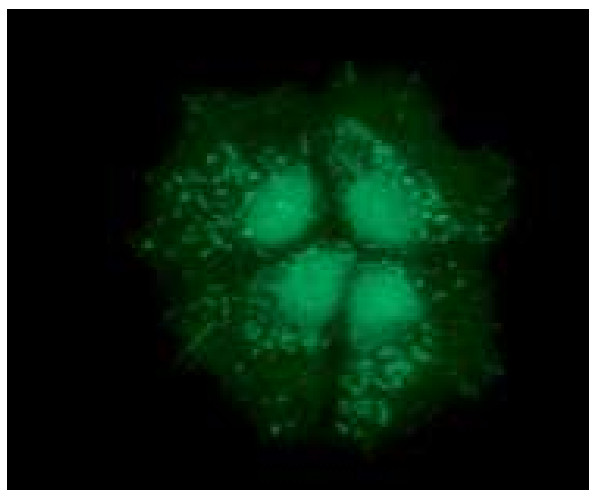
Lane 1.: PC3 cell lysate

Lane 2.: HepG2 cell lysate



ICC/IF analysis

ICC/IF analysis of DECR1 in Hep3B cells line, stained with DAPI (Blue) for nucleus staining and monoclonal anti-human DECR1 antibody (1:100) with goat anti-mouse IgG-Alexa fluor 488 conjugate (Green).

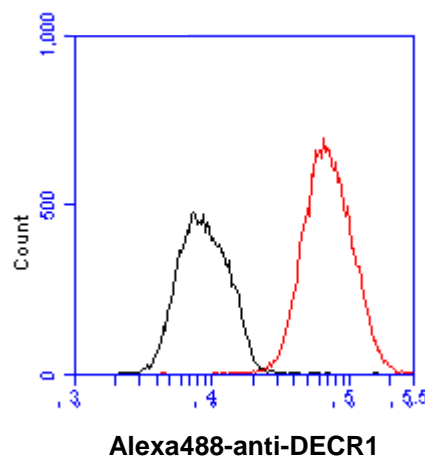


For research use only. This product is not intended or approved for human, diagnostics or veterinary use.

Product information

Flow cytometry

Flow cytometry analysis of DECR1 in Hep3B cell line, staining at 2-5ug for 1×10^6 cells (red line). The secondary antibody used goat anti-mouse IgG Alexa fluor 488 conjugate. Isotype control antibody was mouse IgG (black line).



General references: Koivuranta KT., *et al.* (1994) *Biochem J.* **304(3)**: 787-92.
Roe CR., *et al.* (1990) *J Clin Invest.* **85(5)**: 1703-7.

For research use only. This product is not intended or approved for human, diagnostics or veterinary use.