

Monoclonal anti-human CDC37 antibody (clone AT3G7)

Mouse IgG₁, κ

Cat. No. IBATGA0428

Immunogen: Recombinant human CDC37 (1-378aa) purified from *E. coli*

NCBI Accession No.: NP_008996

Isotype: Mouse IgG₁ heavy chain and κ light chain

Clone: Anti-human CDC37 mAb, clone AT3G7, is derived from hybridization of mouse F0 myeloma cells with spleen cells from BALB/c mice immunized with a recombinant human CDC37 protein.

Description: The protein encoded by this gene is highly similar to CDC37, a cell division cycle control protein of *Saccharomyces cerevisiae*. This protein is a molecular chaperone with specific function in cell signal transduction. It has been shown to form complex with Hsp90 and a variety of protein kinases including CDK4, CDK6, SRC, RAF1, MOK, as well as eIF-2 alpha kinases. It is thought to play a critical role in directing Hsp90 to its target kinases.

Concentration: 1mg/ml

Form: Liquid. In Phosphate-Buffered Saline (pH 7.4) with 0.02% Sodium Azide, 10% Glycerol

Storage: Can be stored at +4°C. For long term storage, aliquot and store at -20°C. Avoid repeated freezing and thawing cycles.

Usage: The antibody has been tested by ELISA, Western blot analysis and ICC/IF to assure specificity and reactivity. Since application varies, however, each investigation should be titrated by the reagent to obtain optimal results.

Application: ELISA, WB, ICC/IF

For research use only. This product is not intended or approved for human, diagnostics or veterinary use.



Manufactured for:

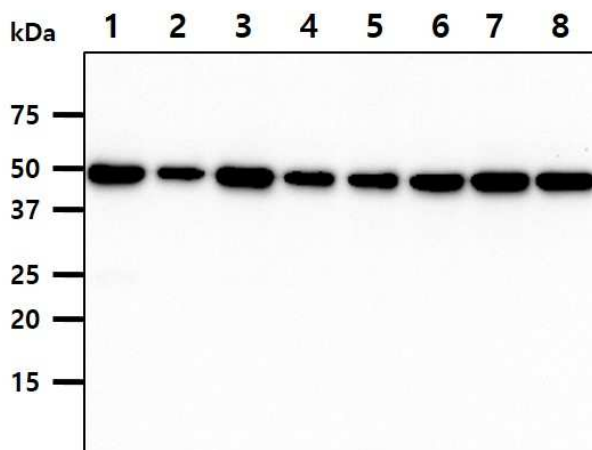
Immuno-Biological Laboratories, Inc. (IBL-America)
8201 Central Ave. NE, Suite P, Minneapolis, Minnesota 55432, USA
Phone: (888) 523-1246 Fax.: (763) 780-2988
Email: info@ibl-america.com Web: www.ibl-america.com

Product information

Western blot analysis

The cell line and tissue lysates (40ug) were resolved by SDS-PAGE, transferred to PVDF membrane and probed with anti-human CDC37 antibody (1:1000). Proteins were visualized using a goat anti-mouse secondary antibody conjugated to HRP and an ECL detection system.

- Lane 1. : Jurkat cell lysate
- Lane 2. : A431 cell lysate
- Lane 3. : K562 cell lysate
- Lane 4. : LnCap cell lysate
- Lane 5. : SW480 cell lysate
- Lane 6. : HeLa cell lysate
- Lane 7. : MCF7 cell lysate
- Lane 8. : 293T cell lysate



ICC/IF analysis

ICC/IF analysis of CDC37 in Balb/3T3 cells line, stained with DAPI (Blue) for nucleus staining and monoclonal anti-human CDC37 antibody (1:100) with goat anti-mouse IgG-Alexa fluor 488 conjugate (Green).



- General references:** Quotti Tubi, *et al.* (2013) *J Hematol Oncol.* **6**: 78.
Manni S., *et al.* (2012) *Clin Cancer Res.* **18**: 1888-900.

For research use only. This product is not intended or approved for human, diagnostics or veterinary use.