

## Monoclonal anti-human CKB antibody (clone AT8E4)

Mouse IgG<sub>2a</sub>, κ

Cat. No. IBATGA0426

**Immunogen:** Recombinant human CKB (1-381aa) purified from *E. coli*

**NCBI Accession No.:** NP\_001814

**Isotype:** Mouse IgG<sub>2a</sub> heavy chain and κ light chain

**Clone:** Anti-human CKB mAb, clone AT8E4, is derived from hybridization of mouse F0 myeloma cells with spleen cells from BALB/c mice immunized with a recombinant human CKB protein.

**Description:** CKB (Creatine kinase B-type) is a cytoplasmic enzyme involved in energy homeostasis. The protein reversibly catalyzes the transfer of phosphate between ATP and various phosphogens such as creatine phosphate. It acts as a homodimer in brain as well as in other tissues, and as a heterodimer with a similar muscle isozyme in heart. Creatine kinases provide the energy of phosphate hydrolysis necessary to drive the normal function of many cellular systems including muscle, tumor and cancer cells.

**Concentration:** 1 mg/ml

**Form:** Liquid. In Phosphate-Buffered Saline (pH 7.4) with 0.02% Sodium Azide, 10% Glycerol

**Storage:** Can be stored at +4C. For long term storage, aliquot and store at -20C. Avoid repeated freezing and thawing cycles.

**Usage:** The antibody has been tested by ELISA, Western blot analysis, Flow cytometry and ICC/IF to assure specificity and reactivity. Since application varies, however, each investigation should be titrated by the reagent to obtain optimal results.

**Application:** ELISA, WB, Flow cytometry, ICC/IF

**For research use only. This product is not intended or approved for human, diagnostics or veterinary use.**



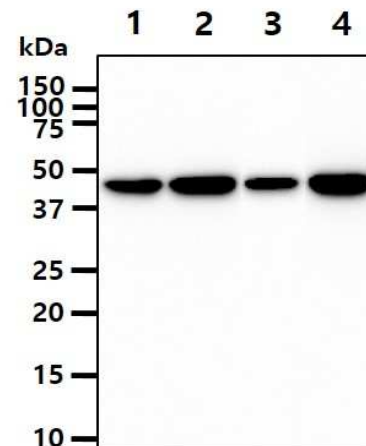
Manufactured for:  
Immuno-Biological Laboratories, Inc. (IBL-America)  
8201 Central Ave. NE, Suite P, Minneapolis, Minnesota 55432, USA  
Phone: (888) 523-1246 Fax.: (763) 780-2988  
Email: [info@ibl-america.com](mailto:info@ibl-america.com) Web: [www.ibl-america.com](http://www.ibl-america.com)

# Product information

## Western blot analysis

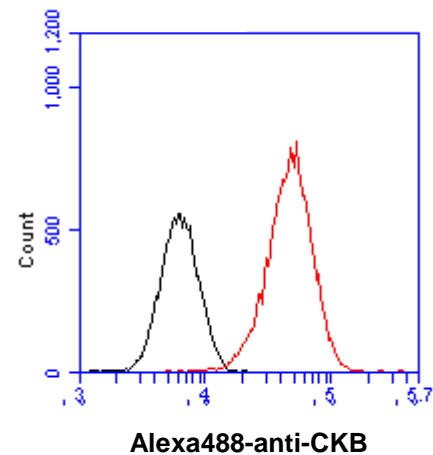
The cell lysates (40ug) were resolved by SDS-PAGE, transferred to PVDF membrane and probed with anti-human CKB antibody (1:1000). Proteins were visualized using a goat anti-mouse secondary antibody conjugated to HRP and an ECL detection system.

Lane 1.: HeLa cell lysate  
 Lane 2.: 293T cell lysate  
 Lane 2.: K562 cell lysate  
 Lane 2.: LnCap cell lysate



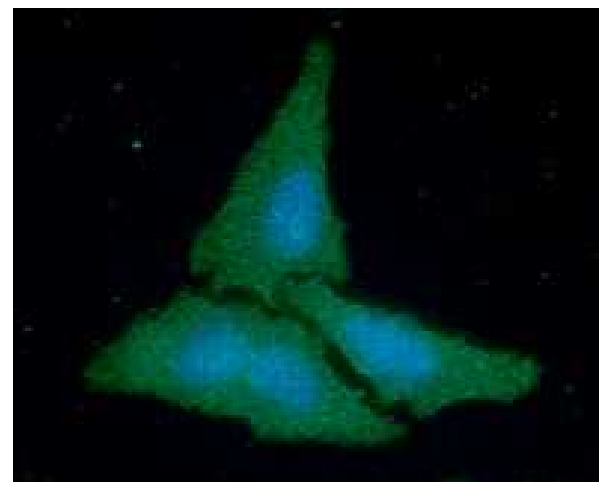
## Flow cytometry

Flow cytometry analysis of CKB in HeLa cell line, staining at 2-5ug for  $1 \times 10^6$  cells (red line). The secondary antibody used goat anti-mouse IgG Alexa fluor 488 conjugate. Isotype control antibody was mouse IgG (black line).



## ICC/IF analysis

ICC/IF analysis of CKB in HeLa cells line, stained with DAPI (Blue) for nucleus staining and monoclonal anti-human CKB antibody (1:100) with goat anti-mouse IgG-Alexa fluor 488 conjugate (Green).



**General references:** Chang EJ., *et al.* (2008) *Nat Med.* **14(9)**: 966-72.  
 Debrincat MA., *et al.* (2007) *J Biol Chem.* **282(7)**: 4728-37.

**For research use only. This product is not intended or approved for human, diagnostics or veterinary use.**