

## Monoclonal anti-human CAPG antibody (clone AT1D10)

Mouse IgG<sub>2b</sub>, κ

Cat. No. IBATGA0420

**Immunogen:** Recombinant human CAPG (1-348aa) purified from *E. coli*

**NCBI Accession No.:** AAH00728

**Isotype:** Mouse IgG<sub>2b</sub> heavy chain and κ light chain

**Clone:** Anti-human CAPG mAb, clone AT1D10, is derived from hybridization of mouse F0 myeloma cells with spleen cells from BALB/c mice immunized with a recombinant human CAPG protein.

**Description:** Macrophage-capping protein, also known as CAPG, belongs to the gelsolin/villin family of actin-regulatory proteins. CAPG is a calcium-sensitive DNA-binding protein that plays a role in macrophage function. It is expressed in macrophages and macrophage-like cells and can localize both to the nucleus and the cytoplasm. This protein reversibly blocks the barbed ends of F-actin filaments in a Ca<sup>2+</sup> and phosphoinositide-regulated manner, but does not sever preformed actin filaments.

**Concentration:** 1mg/ml

**Form:** Liquid. In Phosphate-Buffered Saline (pH 7.4) with 0.02% Sodium Azide, 10% Glycerol

**Storage:** Can be stored at +4°C. For long term storage, aliquot and store at -20°C. Avoid repeated freezing and thawing cycles.

**Usage:** The antibody has been tested by ELISA, Western blot analysis and ICC/IF to assure specificity and reactivity. Since application varies, however, each investigation should be titrated by the reagent to obtain optimal results.

**Application:** ELISA, WB, ICC/IF

**For research use only. This product is not intended or approved for human, diagnostics or veterinary use.**



Manufactured for:  
Immuno-Biological Laboratories, Inc. (IBL-America)  
8201 Central Ave. NE, Suite P, Minneapolis, Minnesota 55432, USA  
Phone: (888) 523-1246 Fax.: (763) 780-2988  
Email: [info@ibl-america.com](mailto:info@ibl-america.com) Web: [www.ibl-america.com](http://www.ibl-america.com)

# Product information

## Western blot analysis

The cell lysates (40ug) were resolved by SDS-PAGE, transferred to PVDF membrane and probed with anti-human CAPG antibody (1:1000). Proteins were visualized using a goat anti-mouse secondary antibody conjugated to HRP and an ECL detection system.

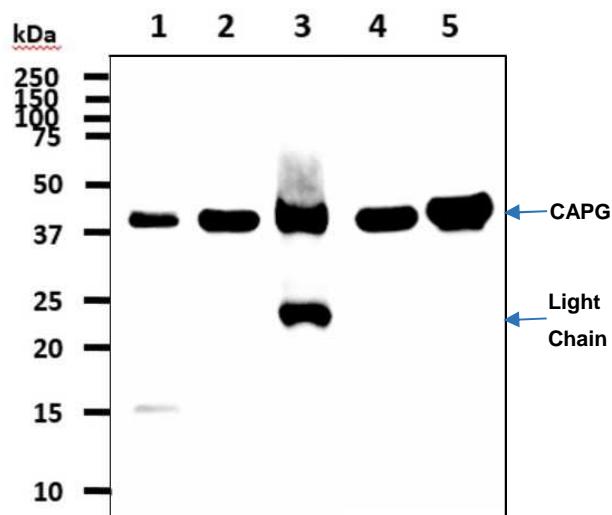
Lane 1.: HeLa cell lysate

Lane 2.: NIH3T3 cell lysate

Lane 3.: Mouse spleen tissue lysate

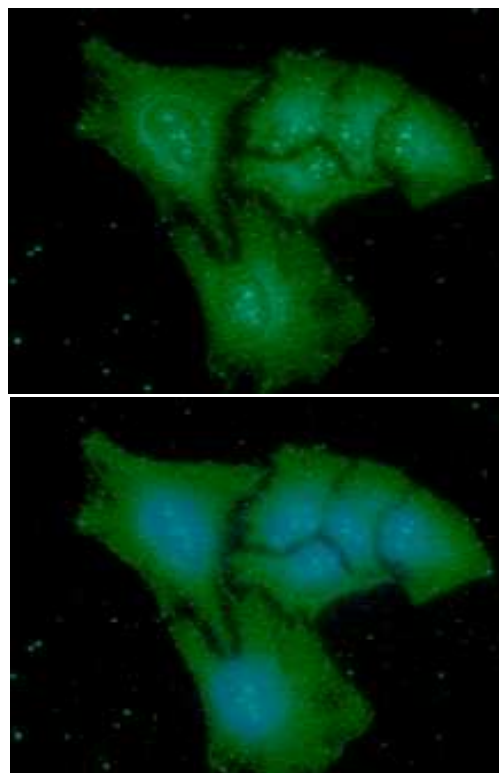
Lane 4.: THP-1 cell lysate

Lane 5.: Raw 264.7 cell lysate



## ICC/IF analysis

ICC/IF analysis of CAPG in HeLa cells line, stained with DAPI (Blue) for nucleus staining and monoclonal anti-human CAPG antibody (1:100) with goat anti-mouse IgG-Alexa fluor 488 conjugate (Green).



**General references:** Kumar A., *et al.* (2015) *Mol Cell Endocrinol.* **404**: 91-101.

Dabiri G A., *et al.* (1992) *J Biol Chem.* **267**: 16545-16552.

**For research use only. This product is not intended or approved for human, diagnostics or veterinary use.**