

Monoclonal anti-human ASS1 antibody (clone AT1G11)

Mouse IgG_{2a}, κ

Cat. No. IBATGA0416

Immunogen: Recombinant human ASS1 (1-412aa) purified from *E. coli*

NCBI Accession No.: NP_000041

Isotype: Mouse IgG_{2a} heavy chain and κ light chain

Clone: Anti-human ASS1 mAb, clone AT1G11, is derived from hybridization of mouse F0 myeloma cells with spleen cells from BALB/c mice immunized with a recombinant human ASS1 protein.

Description: ASS1 (argininosuccinate synthase or citrulline-aspartate ligase) belongs to the argininosuccinate synthase family. ASS1 is a urea cycle enzyme that is essential in the conversion of nitrogen from ammonia and aspartate to urea. A deficiency of ASS1 causes citrullinemia (CTLN1), an autosomal recessive disease which is characterized by severe vomiting spells and mental retardation. Cells deficient in ASS1 must absorb the arginine they need for growth from circulating blood.

Concentration: 1 mg/ml

Form: Liquid. In Phosphate-Buffered Saline (pH 7.4) with 0.02% Sodium Azide, 10% Glycerol

Storage: Can be stored at +4°C. For long term storage, aliquot and store at -20°C. Avoid repeated freezing and thawing cycles.

Usage: The antibody has been tested by ELISA, Western blot analysis, Flow cytometry and ICC/IF to assure specificity and reactivity. Since application varies, however, each investigation should be titrated by the reagent to obtain optimal results.

Application: ELISA, WB, Flow cytometry, ICC/IF

For research use only. This product is not intended or approved for human, diagnostics or veterinary use.

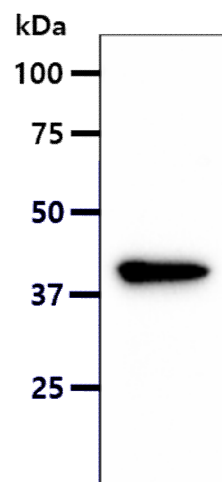


Manufactured for:
Immuno-Biological Laboratories, Inc. (IBL-America)
8201 Central Ave. NE, Suite P, Minneapolis, Minnesota 55432, USA
Phone: (888) 523-1246 Fax: (763) 780-2988
Email: info@ibl-america.com Web: www.ibl-america.com

Product information

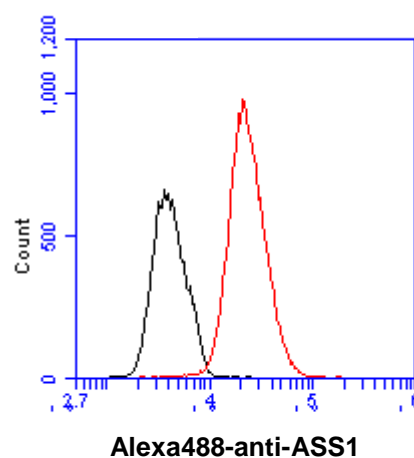
Western blot analysis

The MCF-7 cell lysate (40ug) were resolved by SDS-PAGE, transferred to PVDF membrane and probed with anti-human ASS1 antibody (1:500). Proteins were visualized using a goat anti-mouse secondary antibody conjugated to HRP and an ECL detection system.



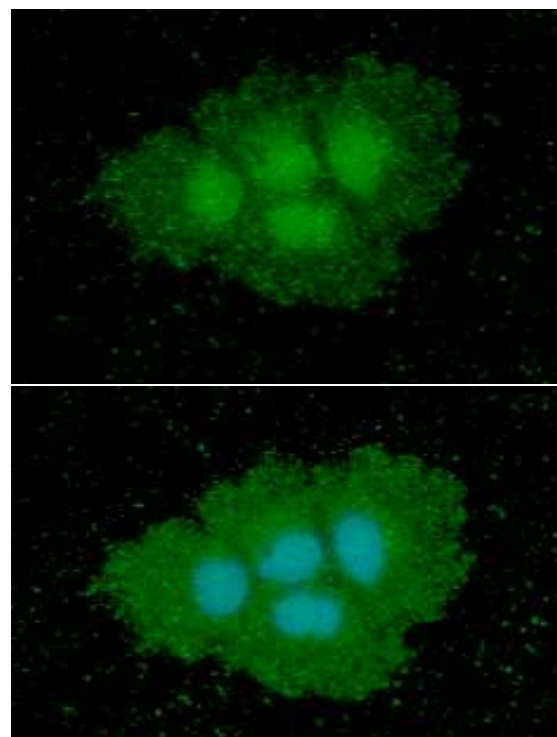
Flow cytometry

Flow cytometry analysis of ASS1 in Hep3B cell line, staining at 2-5ug for 1×10^6 cells (red line). The secondary antibody used goat anti-mouse IgG Alexa fluor 488 conjugate. Isotype control antibody was mouse IgG (black line).



ICC/IF analysis

ICC/IF analysis of ASS1 in Hep3B cells line, stained with DAPI (Blue) for nucleus staining and monoclonal anti-human ASS1 antibody (1:100) with goat anti-mouse IgG-Alexa fluor 488 conjugate (Green).



For research use only. This product is not intended or approved for human, diagnostics or veterinary use.

Product information

General references: Chalikiopoulou C., *et al.* (2016) *Pharmacogenomics*. **(4)**: 393-403.
Rabinovich S., *et al.* (2015) *Nature*. **527(7578)**: 379-83.
Walts AE., *et al.* (2015) *J Cancer Res Clin Oncol*. **141(8)**: 1363-9.

For research use only. This product is not intended or approved for human, diagnostics or veterinary use.



Manufactured for:
Immuno-Biological Laboratories, Inc. (IBL-America)
8201 Central Ave. NE, Suite P, Minneapolis, Minnesota 55432, USA
Phone: (888) 523-1246 Fax.: (763) 780-2988
Email: info@ibl-america.com Web: www.ibl-america.com