

Monoclonal anti-human AIMP1 antibody (clone AT6D10)

Mouse IgG_{2a}, κ

Cat. No. IBATGA0396

Immunogen: Recombinant human AIMP1 (1-336aa) purified from *E. coli*

NCBI Accession No.: NP_001135888

Isotype: Mouse IgG_{2a} heavy chain and κ light chain

Clone: Anti-human AIMP1 mAb, clone AT6D10, is derived from hybridization of mouse F0 myeloma cells with spleen cells from BALB/c mice immunized with a recombinant human AIMP1 protein.

Description: AIMP1, also known as p43, hasn't until recently been recognized for its prominent immunological functions. Together with other nonenzymatic mARS structural components AIMp2/38 and AIMp3/p18, it participates in the machinery responsible for cell-cycle control and tumor suppression.

Concentration: 1 mg/ml

Form: Liquid. In Phosphate-Buffered Saline (pH 7.4) with 0.02% Sodium Azide, 10% Glycerol

Storage: Can be stored at +4C. For long term storage, aliquot and store at -20C. Avoid repeated freezing and thawing cycles.

Usage: The antibody has been tested by ELISA, Western blot analysis, Flow cytometry and ICC/IF to assure specificity and reactivity. Since application varies, however, each investigation should be titrated by the reagent to obtain optimal results.

Application: ELISA, WB, Flow cytometry, ICC/IF

For research use only. This product is not intended or approved for human, diagnostics or veterinary use.



Manufactured for:

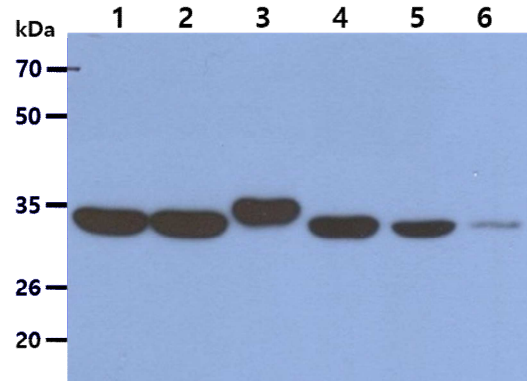
Immuno-Biological Laboratories, Inc. (IBL-America)
8201 Central Ave. NE, Suite P, Minneapolis, Minnesota 55432, USA
Phone: (888) 523-1246 Fax.: (763) 780-2988
Email: info@ibl-america.com Web: www.ibl-america.com

Product information

Western blot analysis

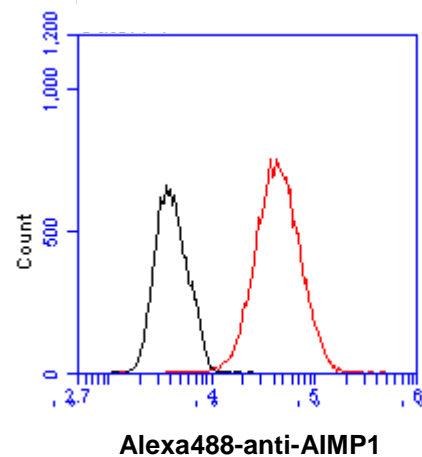
The Cell lysates (40ug) were resolved by SDS-PAGE, transferred to PVDF membrane and probed with anti-human AIMP1 antibody (1:1000). Proteins were visualized using a goat anti-mouse secondary antibody conjugated to HRP and an ECL detection system.

- Lane 1. : HeLa cell lysate
- Lane 2. : HepG2 cell lysate
- Lane 3. : Raji cell lysate
- Lane 4. : Jurkat cell lysate
- Lane 5. : A549 cell lysate
- Lane 6. : HaCaT cell lysate



Flow cytometry

Flow cytometry analysis of AIMP1 in Hep3B cell line, staining at 2-5ug for 1×10^6 cells (red line). The secondary antibody used goat anti-mouse IgG Alexa fluor 488 conjugate. Isotype control antibody was mouse IgG (black line).

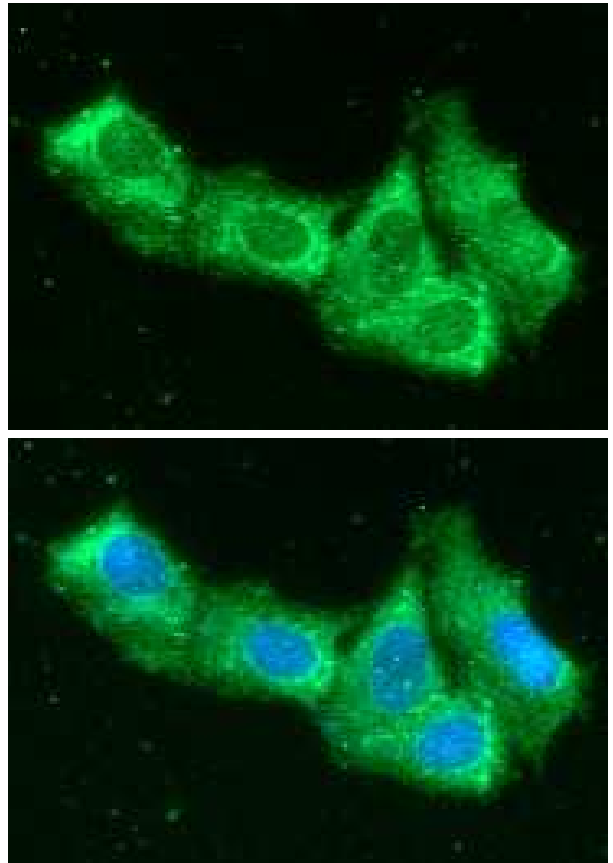


For research use only. This product is not intended or approved for human, diagnostics or veterinary use.

Product information

ICC/IF analysis

ICC/IF analysis of AIMP1 in Hep3B cells line, stained with DAPI (Blue) for nucleus staining and monoclonal anti-human AIMP1 antibody (1:100) with goat anti-mouse IgG-Alexa fluor 488 conjugate (Green).



General references: Liang D., *et al.* (2015) *Int Rev Immunol.* **34(5)**: 367-381.
Hong SH., *et al.* (2015) *Biomaterials.* **44**: 45-54.

For research use only. This product is not intended or approved for human, diagnostics or veterinary use.