

Monoclonal anti-human ARG2 antibody (clone AT7F8)

Mouse IgG₁, κ

Cat. No. IBATGA0389

Immunogen: Recombinant human ARG2 (23-354aa) purified from *E. coli*

NCBI Accession No.: NP_001163

Isotype: Mouse IgG₁ heavy chain and κ light chain

Clone: Anti-human ARG2 mAb, clone AT7F8, is derived from hybridization of mouse F0 myeloma cells with spleen cells from BALB/c mice immunized with a recombinant human ARG2 protein.

Description: Arginase 2 catalyzes the same reaction as arginase 1, but differs in its tissue specificity and subcellular location. Specifically, arginase 2 localizes to the mitochondria. Arginase 2 is expressed in non-hepatic tissues, with the highest levels of expression in the kidneys, but, unlike arginase 1, is not expressed in liver.

Concentration: 1 mg/ml

Form: Liquid. In Phosphate-Buffered Saline (pH 7.4) with 0.02% Sodium Azide, 10% Glycerol

Storage: Can be stored at +4C. For long term storage, aliquot and store at -20C. Avoid repeated freezing and thawing cycles.

Usage: The antibody has been tested by ELISA, Western blot analysis, Flow cytometry and ICC/IF to assure specificity and reactivity. Since application varies, however, each investigation should be titrated by the reagent to obtain optimal results.

Application: ELISA, WB, Flow cytometry, ICC/IF

For research use only. This product is not intended or approved for human, diagnostics or veterinary use.



Manufactured for:

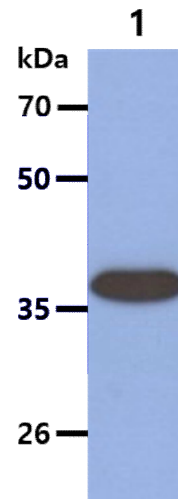
Immuno-Biological Laboratories, Inc. (IBL-America)
8201 Central Ave. NE, Suite P, Minneapolis, Minnesota 55432, USA
Phone: (888) 523-1246 Fax.: (763) 780-2988
Email: info@ibl-america.com Web: www.ibl-america.com

Product information

Western blot analysis

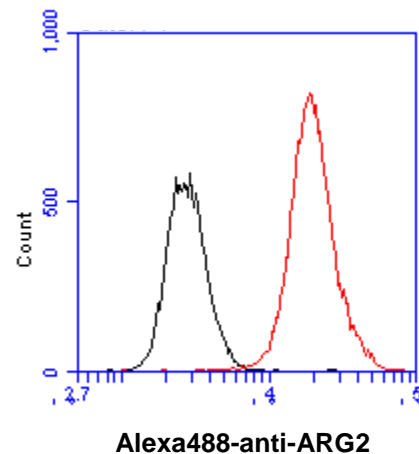
The SW480 Cell lysate (40ug) were resolved by SDS-PAGE, transferred to PVDF membrane and probed with anti-human ARG2 antibody (1:1000). Proteins were visualized using a goat anti-mouse secondary antibody conjugated to HRP and an ECL detection system.

Lane 1. : SW480 cell lysate



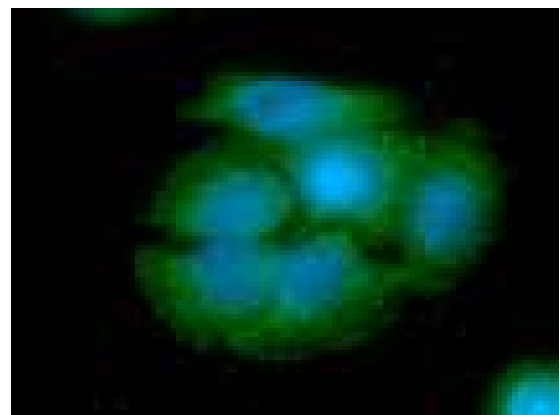
Flow cytometry

Flow cytometry analysis of ARG2 in SW480 cell line, staining at 2-5ug for 1×10^6 cells (red line). The secondary antibody used goat anti-mouse IgG Alexa fluor 488 conjugate. Isotype control antibody was mouse IgG (black line).



ICC/IF analysis

ICC/IF analysis of ARG2 in SW480 cells line, stained with DAPI (Blue) for nucleus staining and monoclonal anti-human ARG2 antibody (1:100) with goat anti-mouse IgG-Alexa fluor 488 conjugate (Green).



General references: Watts JA., *et al.* (2011) *Pulm Pharmacol Ther.* **24(4)**: 407-413.

Tadie JM., *et al.* (2008) *Am J Physiol Lung Cell Mol Physiol.* **294(3)**: 489-497.

For research use only. This product is not intended or approved for human, diagnostics or veterinary use.