

Monoclonal anti-human AHA1 antibody (clone AT3E9)

Mouse IgG_{2b}, κ

Cat. No. IBATGA0388

Immunogen: Recombinant human AHA1(19-337aa) purified from *E. coli*

NCBI Accession No.: NP_036243

Isotype: Mouse IgG_{2b} heavy chain and κ light chain

Clone: Anti-human AHA1 mAb, clone AT3E9, is derived from hybridization of mouse F0 myeloma cells with spleen cells from BALB/c mice immunized with a recombinant human AHA1 protein.

Description: The Co-chaperone AHA1 (Activator of HSP90 ATPase-1) is proposed to function as an ATPase activating protein. May affect a step in the endoplasmic reticulum to Golgi trafficking. It expressed in numerous tissues, including brain, heart, skeletal muscle and kidney and, at lower levels, liver and placenta.

Concentration: 1mg/ml

Form: Liquid. In Phosphate-Buffered Saline (pH 7.4) with 0.02% Sodium Azide, 10% Glycerol

Storage: Can be stored at +4°C. For long term storage, aliquot and store at -20°C. Avoid repeated freezing and thawing cycles.

Usage: The antibody has been tested by ELISA, Western blot analysis and ICC/IF to assure specificity and reactivity. Since application varies, however, each investigation should be titrated by the reagent to obtain optimal results. Recommended starting dilution for Western blot analysis is 1:1000.

Application: ELISA, WB, ICC/IF

For research use only. This product is not intended or approved for human, diagnostics or veterinary use.



Manufactured for:

Immuno-Biological Laboratories, Inc. (IBL-America)
8201 Central Ave. NE, Suite P, Minneapolis, Minnesota 55432, USA
Phone: (888) 523-1246 Fax.: (763) 780-2988
Email: info@ibl-america.com Web: www.ibl-america.com

Product information

Western blot analysis

The Recombinant Human AHA1 (50ng) and Cell lysates (40ug) were resolved by SDS-PAGE, transferred to PVDF membrane and probed with anti-human AHA1 antibody (1:1000). Proteins were visualized using a goat anti-mouse secondary antibody conjugated to HRP and an ECL detection system.

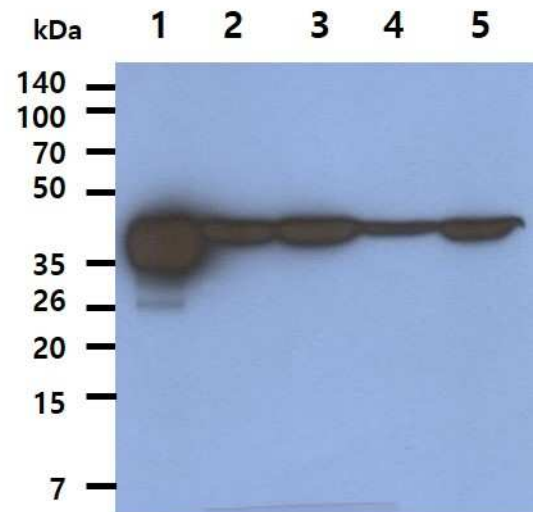
Lane 1. : AHA1 Recombinant protein

Lane 2. : MCF-7 cell lysate

Lane 3. : PC-3 cell lysate

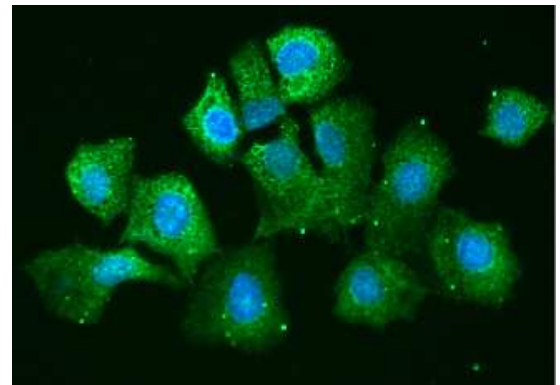
Lane 4. : 293T cell lysate

Lane 5. : HeLa cell lysate



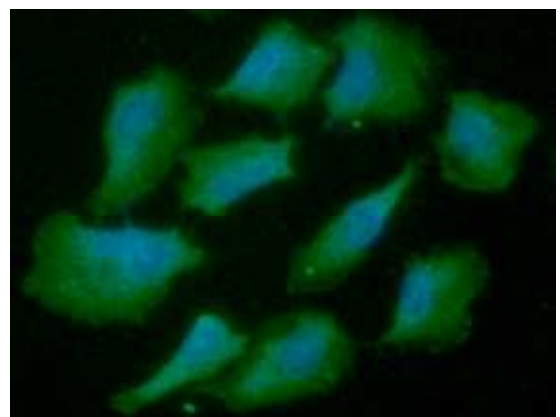
ICC/IF analysis

ICC/IF analysis of AHA1 in Hep3B cells line, stained with DAPI (Blue) for nucleus staining and monoclonal anti-human AHA1 antibody (1:100) with goat anti-mouse IgG-Alexa fluor 488 conjugate (Green).



ICC/IF analysis

ICC/IF analysis of AHA1 in A549 cells line, stained with DAPI (Blue) for nucleus staining and monoclonal anti-human AHA1 antibody (1:100) with goat anti-mouse IgG-Alexa fluor 488 conjugate (Green).



General references: Meyer P., *et al.* (2004) *EMBO*. **23(6)**: 1402-1410.

Siligardi G., *et al.* (2004) *J Biol Chem*. **270(50)**: 51989-51998.

For research use only. This product is not intended or approved for human, diagnostics or veterinary use.