

Monoclonal anti-human ACTN1 antibody (clone AT1D10)

Mouse IgG_{2a}, κ

Cat. No. IBATGA0377

Immunogen: Recombinant human ACTN1 (1-249aa) purified from *E. coli*

NCBI Accession No.: NP_001123476

Isotype: Mouse IgG_{2a} heavy chain and κ light chain

Clone: Anti-human ACTN1 mAb, clone AT1D10, is derived from hybridization of mouse F0 myeloma cells with spleen cells from BALB/c mice immunized with a recombinant human ACTN1 protein.

Description: ACTN1 also known as Actinin, alpha 1. ACTN1 functions as an actin-binding-protein. ACTN1 determines the motility of keratinocytes by regulating the organization of the actin cytoskeleton, focal adhesion, and hemidesmosome proteins complexes, thereby modulating cell speed, lamellipodial dynamics, and directed migration.

Concentration: 1 mg/ml

Form: Liquid. In Phosphate-Buffered Saline (pH 7.4) with 0.02% Sodium Azide, 10% Glycerol

Storage: Can be stored at +4C. For long term storage, aliquot and store at -20C. Avoid repeated freezing and thawing cycles.

Usage: The antibody has been tested by ELISA, Western blot analysis and Flow cytometry to assure specificity and reactivity. Since application varies, however, each investigation should be titrated by the reagent to obtain optimal results.

Application: ELISA, WB, Flow cytometry

For research use only. This product is not intended or approved for human, diagnostics or veterinary use.



Manufactured for:

Immuno-Biological Laboratories, Inc. (IBL-America)
8201 Central Ave. NE, Suite P, Minneapolis, Minnesota 55432, USA
Phone: (888) 523-1246 Fax.: (763) 780-2988
Email: info@ibl-america.com Web: www.ibl-america.com

Product information

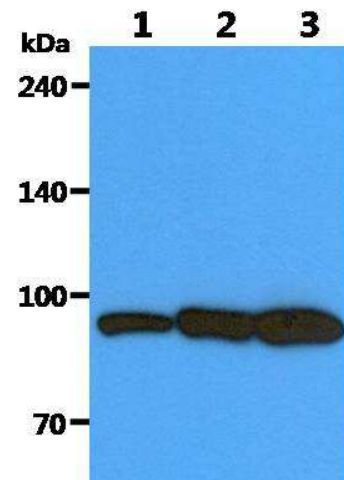
Western blot analysis

The Cell lysates (40ug) were resolved by SDS-PAGE, transferred to PVDF membrane and probed with anti-human ACTN1 antibody (1:1000). Proteins were visualized using a goat anti-mouse secondary antibody conjugated to HRP and an ECL detection system.

Lane 1. : PC-3 cell lysate

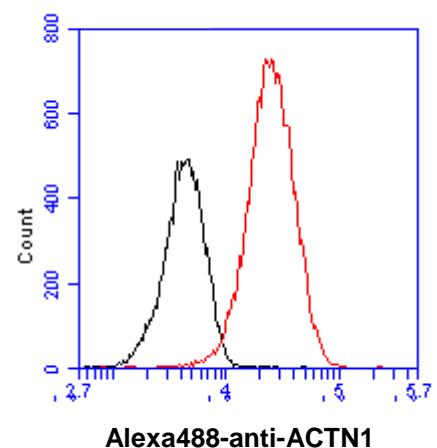
Lane 2. : Balb/3T3 cell lysate

Lane 3. : A549 cell lysate



Flow cytometry

Flow cytometry analysis of ACTN1 in HeLa cell line, staining at 2-5ug for 1×10^6 cells (red line). The secondary antibody used goat anti-mouse IgG Alexa fluor 488 conjugate. Isotype control antibody was mouse IgG (black line).



- General references:** Hamill KJ., *et al.* (2014) *Journal of Invest Dermatology*. **135(4)**: 1043-1052.
Kunishima S., *et al.* (2013) *Am J Hum Genet*. **92(3)**: 431-438.

For research use only. This product is not intended or approved for human, diagnostics or veterinary use.