

Monoclonal anti-human BECN1 antibody (clone AT45E8)

Mouse IgG_{2b}, κ

Cat. No. IBATGA0355

Immunogen: Recombinant human BECN1 (1-450aa) purified from *E.coli*.

NCBI Accession No.: NP_003757

Isotype: Mouse IgG_{2b} heavy chain and κ light chain

Clone: Anti-human BECN1 mAb, clone AT45E8, is derived from hybridization of mouse F0 myeloma cells with spleen cells from BALB/c mice immunized with a recombinant human BECN1 protein.

Description: Beclin-1 is a protein that in humans is encoded by the BECN1 gene. Beclin-1 is a mammalian ortholog of the yeast autophagy-related gene (Atg) 6 and BEC-1 in the *C. elegans* nematode. Beclin-1 participates in the regulation of autophagy and has an important role in development, tumorigenesis, and neurodegeneration. Beclin-1 and its binding partner class III phosphoinositide 3-kinase (PI3K), also named Vps34, are required for the initiation of the formation of the autophagosome in autophagy.

Concentration: 1 mg/ml

Form: Liquid. In Phosphate-Buffered Saline (pH 7.4) with 0.02% Sodium Azide, 10% Glycerol

Storage: Can be stored at +4C. For long term storage, aliquot and store at -20C. Avoid repeated freezing and thawing cycles.

Usage: The antibody has been tested by ELISA, Western blot analysis, Flow cytometry and ICC/IF to assure specificity and reactivity. Since application varies, however, each investigation should be titrated by the reagent to obtain optimal results.

Application: ELISA, WB, Flow cytometry, ICC/IF

For research use only. This product is not intended or approved for human, diagnostics or veterinary use.



Manufactured for:

Immuno-Biological Laboratories, Inc. (IBL-America)
8201 Central Ave. NE, Suite P, Minneapolis, Minnesota 55432, USA

Phone: (888) 523-1246

Fax.: (763) 780-2988

Email: info@ibl-america.com

Web: www.ibl-america.com

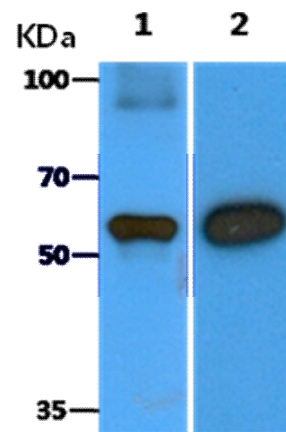
Product information

Western blot analysis

The Recombinant Human BECN1 (10ng) and Cell lysates were resolved by SDS-PAGE, transferred to PVDF membrane and probed with anti-human BECN1 antibody (1:5000). Proteins were visualized using a goat anti-mouse secondary antibody conjugated to HRP and an ECL detection system.

Lane 1.: Recombinant Human BECN1

Lane 2.: Balb/3T3 cell lysate

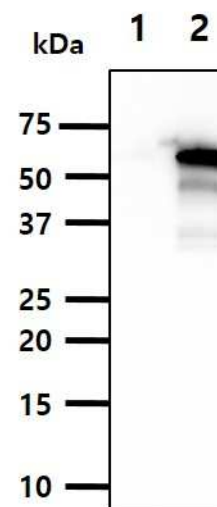


Western blot analysis

The Cell lysates (10ug) were resolved by SDS-PAGE, transferred to PVDF membrane and probed with anti-human BECN1 antibody (1:1000). Proteins were visualized using a goat anti-mouse secondary antibody conjugated to HRP and an ECL detection system.

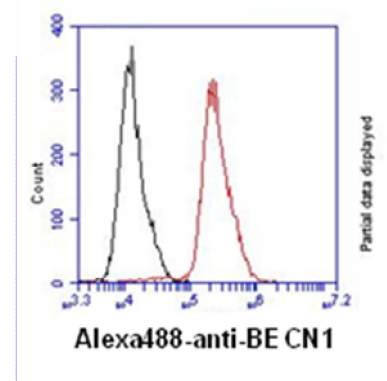
Lane 1.: 293T cell lysate

Lane 2.: BECN1 Transfected 293T cell lysate



Flow cytometry

Flow cytometry analysis of BECN1 in HeLa cell line, staining at 2-5ug for 1×10^6 cells (red line). The secondary antibody used goat anti-mouse IgG Alexa fluor 488 conjugate. Isotype control antibody was mouse IgG (black line).

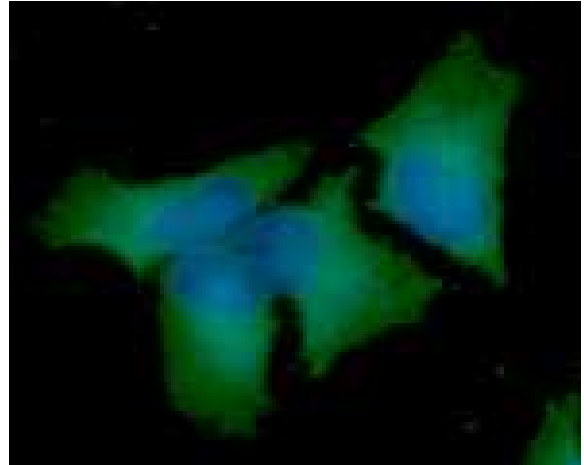


For research use only. This product is not intended or approved for human, diagnostics or veterinary use.

Product information

ICC/IF analysis

ICC/IF analysis of BECN1 in HeLa cells line, stained with DAPI (Blue) for nucleus staining and monoclonal anti-human BECN1 antibody (1:100) with goat anti-mouse IgG-Alexa fluor 488 conjugate (Green).



General references: Liang XH., *et al.* (1998) *J Virol.* **72(11)**: 8586–8596.
Takacs-Vellai K., *et al.* (2005) *Curr Biol.* **15(16)**: 1513–1517.

For research use only. This product is not intended or approved for human, diagnostics or veterinary use.