

## Monoclonal anti-human Annexin A1 antibody (clone AT2G5)

Mouse IgG<sub>1</sub>, κ

Cat. No. IBATGA0336

**Immunogen:** Recombinant human Annexin A1 (1-346aa) purified from *E.coli*.

**NCBI Accession No.:** NP\_000691

**Isotype:** Mouse IgG<sub>1</sub> heavy chain and κ light chain

**Clone:** Anti-human Annexin A1 mAb, clone AT2G5, is derived from hybridization of mouse F0 myeloma cells with spleen cells from BALB/c mice immunized with a recombinant human Annexin A1 protein.

**Description:** Annexin A1, also known as Lipocortin I, belongs to a family of Ca(2+)-dependent phospholipid binding proteins that are preferentially located on the cytosolic face of the plasma membrane. It promotes membrane fusion and is also involved in exocytosis. Since Annexin A1 has phospholipase A2 inhibitory activity to bind from two to four calcium ions with high affinity, this protein may have potential anti-inflammatory activity. The detection of this protein by immunocytochemical means reportedly provides a simple, highly sensitive and specific assay for diagnosis of hairy cell leukemia.

**Concentration:** 1 mg/ml

**Form:** Liquid. In Phosphate-Buffered Saline (pH 7.4) with 0.02% Sodium Azide, 10% Glycerol

**Storage:** Can be stored at +4C. For long term storage, aliquot and store at -20C. Avoid repeated freezing and thawing cycles.

**Usage:** The antibody has been tested by ELISA, Western blot analysis to assure specificity and reactivity. Since application varies, however, each investigation should be titrated by the reagent to obtain optimal results. Recommended starting dilution is 1:3000-1:20000.

**Application:** ELISA, WB

**For research use only. This product is not intended or approved for human, diagnostics or veterinary use.**



Manufactured for:  
Immuno-Biological Laboratories, Inc. (IBL-America)  
8201 Central Ave. NE, Suite P, Minneapolis, Minnesota 55432, USA  
Phone: (888) 523-1246 Fax.: (763) 780-2988  
Email: [info@ibl-america.com](mailto:info@ibl-america.com) Web: [www.ibl-america.com](http://www.ibl-america.com)

# Product information

## Western blot analysis

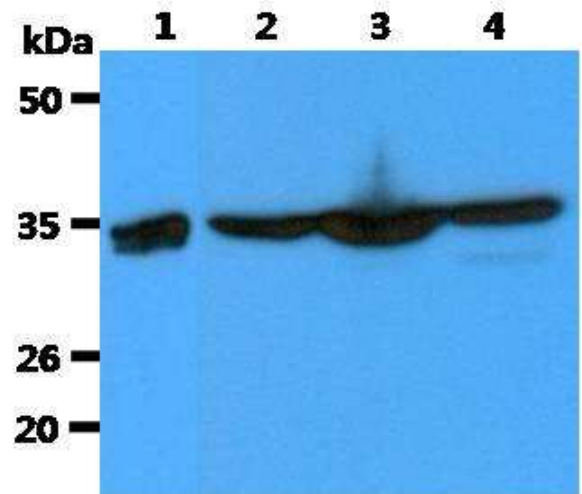
The Recombinant Human Annexin A1 (10ng) and Cell lysates (40ug) were resolved by SDS-PAGE, transferred to PVDF membrane and probed with anti-human Annexin A1 antibody (1:3000). Proteins were visualized using a goat anti-mouse secondary antibody conjugated to HRP and an ECL detection system.

Lane 1.: Recombinant Human Annexin A1

Lane 2.: HeLa cell lysate

Lane 3.: A549 cell lysate

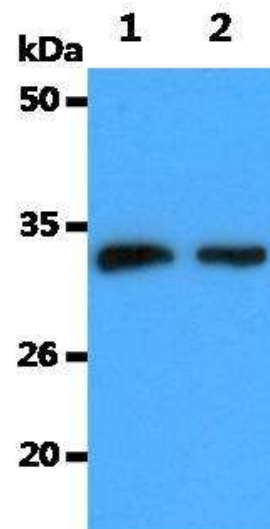
Lane 4.: A431 cell lysate



The HeLa cell lysate (40ug) were resolved by SDS-PAGE, transferred to PVDF membrane and probed with anti-human Annexin A1 antibody. Proteins were visualized using a goat anti-mouse secondary antibody conjugated to HRP and an ECL detection system.

Lane 1.: Anti- Annexin A1 antibody (1:10000)

Lane 2.: Anti- Annexin A1 antibody (1:20000)



**General references:** Lim L.H., *et al.* (2007) *FASEB J.* **21(4)**: 968–975

Kovacic R.T., *et al.* (1991) *Biochemistry.* **30(37)**: 9015–9021

**For research use only. This product is not intended or approved for human, diagnostics or veterinary use.**