

## Monoclonal anti-human CD3E antibody (clone AT3H3)

Mouse IgG<sub>1</sub>,  $\kappa$

Cat. No. IBATGA0331

**Immunogen:** Recombinant human Cd3E (23-126aa) purified from *E. coli*

**NCBI Accession No.:** NP\_000724

**Isotype:** Mouse IgG<sub>1</sub> heavy chain and  $\kappa$  light chain

**Clone:** Anti-human CD3E mAb, clone AT3H3, is derived from hybridization of mouse F0 myeloma cells with spleen cells from BALB/c mice immunized with a recombinant human CD3E protein.

**Description:** The T cell antigen receptor (TCR) recognizes foreign antigens and translates such recognition events into intracellular signals that elicit a change in the cell from a dormant to an activated state. Much of this signaling process can be attributed to a multi subunit complex of proteins that associates directly with the TCR. This complex has been designated CD3 (cluster of differentiation 3). It is composed of five invariant polypeptide chains that associate to form three dimers. The epsilon polypeptide plays an essential role in T-cell development. Defects in this gene cause immunodeficiency. This gene has also been linked to a susceptibility to type I diabetes in women.

**Concentration:** 1mg/ml

**Form:** Liquid. In Phosphate-Buffered Saline (pH 7.4) with 0.02% Sodium Azide, 10% Glycerol.

**Storage:** Can be stored at +4°C. For long term storage, aliquot and store at -20°C. Avoid repeated freezing and thawing cycles.

**Usage:** The antibody has been tested by ELISA, Western blot analysis, Flow cytometry and ICC/IF to assure specificity and reactivity. Since application varies, however, each investigation should be titrated by the reagent to obtain optimal results.

**Application:** ELISA, WB, Flow cytometry, ICC/IF

**For research use only. This product is not intended or approved for human, diagnostics or veterinary use.**

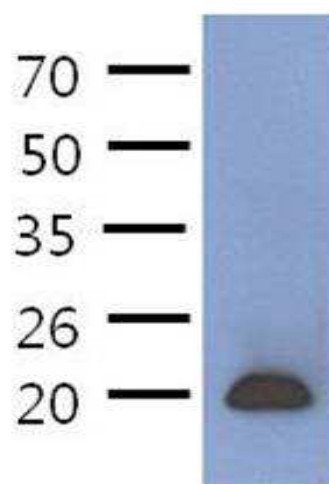


Manufactured for:  
Immuno-Biological Laboratories, Inc. (IBL-America)  
8201 Central Ave. NE, Suite P, Minneapolis, Minnesota 55432, USA  
Phone: (888) 523-1246 Fax.: (763) 780-2988  
Email: [info@ibl-america.com](mailto:info@ibl-america.com) Web: [www.ibl-america.com](http://www.ibl-america.com)

# Product information

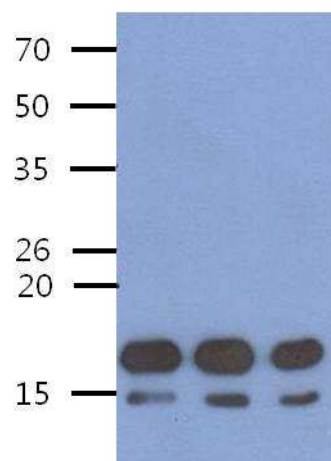
## Western blot analysis

The extract of Jurkat (40ug) were resolved by SDS-PAGE, transferred to PVDF membrane and probed with anti-human CD3E antibody (1:1000). Proteins were visualized using a goat anti-mouse secondary antibody conjugated to HRP and an ECL detection system.



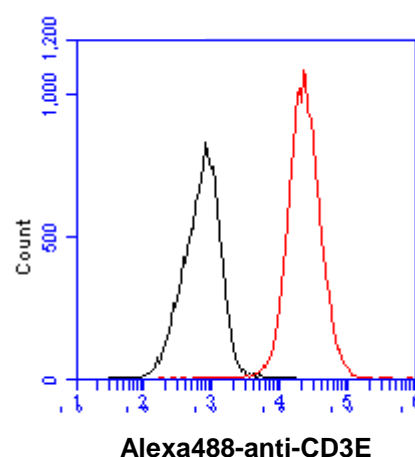
## Western blot analysis

The Human Recombinant protein CD3E(200, 100, 50ng) were resolved by SDS-PAGE, transferred to PVDF membrane and probed with anti-human CD3E antibody (1:1000). Proteins were visualized using a goat anti-mouse secondary antibody conjugated to HRP and an ECL detection system.



## Flow cytometry

Flow cytometry analysis of CD3E in Jurkat cell line, staining at 2-5ug for 1x10<sup>6</sup> cells (red line). The secondary antibody used goat anti-mouse IgG Alexa fluor 488 conjugate. Isotype control antibody was mouse IgG (black line).



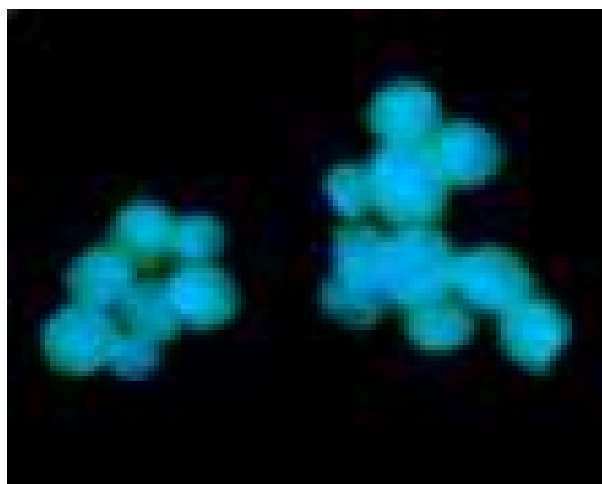
For research use only. This product is not intended or approved for human, diagnostics or veterinary use.

# Product information

---

## ICC/IF analysis

ICC/IF analysis of CD3E in Jurkat cells line, stained with DAPI (Blue) for nucleus staining and monoclonal anti-human CD3E antibody (1:100) with goat anti-mouse IgG-Alexa fluor 488 conjugate (Green).



**General references:** Gold DP., *et al.* (1986) *Nature* **321**(6068): 431-434  
Soudais C., *et al.* (1993) *Nat Genet* 3(1):77-81.

---

For research use only. This product is not intended or approved for human, diagnostics or veterinary use.