

Monoclonal anti-human C1QBP antibody (clone AT1G7)

Mouse IgG₁, κ

Cat. No. IBATGA0330

Immunogen: Recombinant human C1QBP (74-282aa) purified from *E. coli*

NCBI Accession No.: NP_001203

Isotype: Mouse IgG₁ heavy chain and κ light chain

Clone: Anti-human C1QBP mAb, clone AT1G7, is derived from hybridization of mouse F0 myeloma cells with spleen cells from BALB/c mice immunized with a recombinant human C1QBP protein.

Description: Complement component 1 Q subcomponent-binding protein, mitochondrial is a protein that in humans is encoded by the C1QBP gene. The human complement subcomponent C1q associates with C1r and C1s in order to yield the first component of the serum complement system. The protein encoded by this gene is known to bind to the globular heads of C1q molecules and inhibit C1 activation. This protein has also been identified as the p32 subunit of pre-mRNA splicing factor SF2, as well as a hyaluronic acid-binding protein.

Concentration: 1mg/ml

Form: Liquid. In Phosphate-Buffered Saline (pH 7.4) with 0.02% Sodium Azide, 10% Glycerol.

Storage: Can be stored at +4°C. For long term storage, aliquot and store at -20°C. Avoid repeated freezing and thawing cycles.

Usage: The antibody has been tested by ELISA, Western blot analysis, Flow cytometry and ICC/IF to assure specificity and reactivity. Since application varies, however, each investigation should be titrated by the reagent to obtain optimal results.

Application: ELISA, WB, Flow cytometry, ICC/IF

For research use only. This product is not intended or approved for human, diagnostics or veterinary use.



Manufactured for:

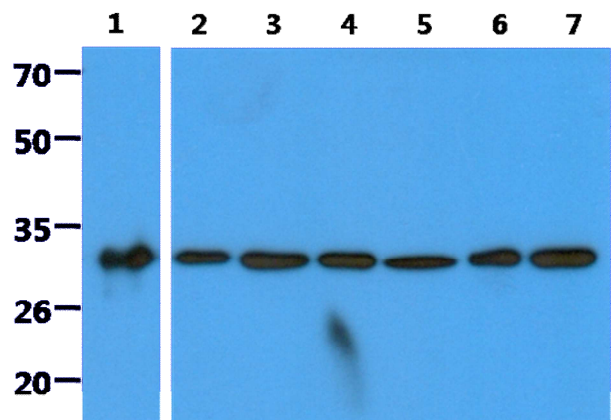
Immuno-Biological Laboratories, Inc. (IBL-America)
8201 Central Ave. NE, Suite P, Minneapolis, Minnesota 55432, USA
Phone: (888) 523-1246 Fax.: (763) 780-2988
Email: info@ibl-america.com Web: www.ibl-america.com

Product information

Western blot analysis

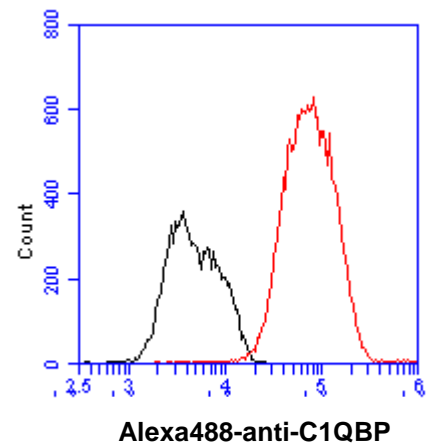
The recombinant protein(50ng) and cell lysates(40ug) were resolved by SDS-PAGE, transferred to PVDF membrane and probed with anti-human C1QBP antibody (1:2000). Proteins were visualized using a goat anti-mouse secondary antibody conjugated to HRP and an ECL detection system.

- Lane 1 : Recombinant protein
- Lane 2 : HeLa cell lysate
- Lane 3 : Jurkat cell lysate
- Lane 4 : MCF7 cell lysate
- Lane 5 : Ramos cell lysate
- Lane 6 : 293T cell lysate
- Lane 7 : A549 cell lysate



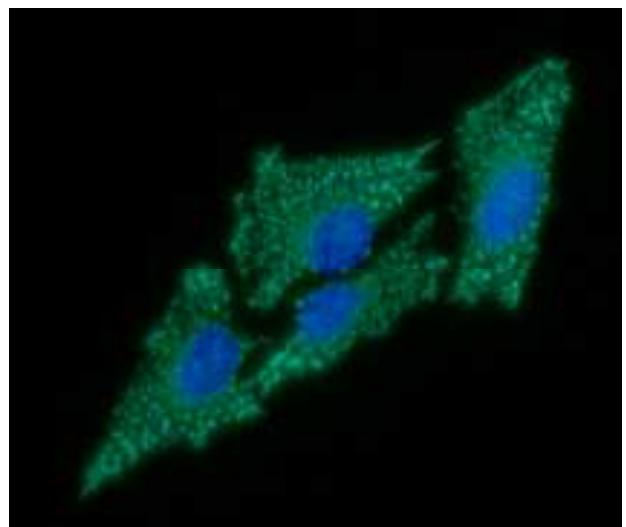
Flow cytometry

Flow cytometry analysis of C1QBP in 293T cell line, staining at 2-5ug for 1×10^6 cells (red line). The secondary antibody used goat anti-mouse IgG Alexa fluor 488 conjugate. Isotype control antibody was mouse IgG (black line).



ICC/IF analysis

ICC/IF analysis of C1QBP in HeLa cells line, stained with DAPI (Blue) for nucleus staining and monoclonal anti-human C1QBP antibody (1:100) with goat anti-mouse IgG-Alexa fluor 488 conjugate (Green).



For research use only. This product is not intended or approved for human, diagnostics or veterinary use.

Product information

- General references:** Deb TB, *et al.* (1996) *J Biol Chem* **271**(4):2206-12.
Ghebrehiwet B, *et al.* (1994) *J Exp Med* **179**(6):1809-21.
Entrez Gene: C1QBP complement component 1, q subcomponent binding protein.

For research use only. This product is not intended or approved for human, diagnostics or veterinary use.



Manufactured for:
Immuno-Biological Laboratories, Inc. (IBL-America)
8201 Central Ave. NE, Suite P, Minneapolis, Minnesota 55432, USA
Phone: (888) 523-1246 Fax.: (763) 780-2988
Email: info@ibl-america.com Web: www.ibl-america.com