

Monoclonal anti-human LRPAP1 antibody (clone AT8G8)

Mouse IgG₁, κ

Cat. No. IBATGA0321

Immunogen: Recombinant human LRPAP1 (35-357aa) purified from *E. coli*

NCBI Accession No.: NP_002328

Isotype: Mouse IgG₁ heavy chain and κ light chain

Clone: Anti-human LRPAP1 mAb, clone AT8G8, is derived from hybridization of mouse F0 myeloma cells with spleen cells from BALB/c mice immunized with a recombinant human LRPAP1 protein.

Description: Alpha-2-macroglobulin receptor-associated protein, also known as low density lipoprotein receptor-related protein-associated protein 1, RAP and LRPAP1, is a 39 kDa protein and a member of the alpha-2-MRAP family. LRPAP1 is a receptor antagonist that interacts with several members of the low density lipoprotein (LDL) receptor gene family. Upon binding to these receptors, LRPAP1 inhibits all ligand interactions with the receptors. LRPAP1 is present on cell surface forming a complex with the alpha-2-macroglobulin receptor heavy and light chains. LRPAP1 is present on the cell surface, where it is an effective inhibitor of ligand binding to the kidney glycoprotein 330 (gp330) yet it is most abundant in the endoplasmic reticulum lumen and may function in receptor folding and/or trafficking.

Concentration: 1 mg/ml

Form: Liquid. In Phosphate-Buffered Saline (pH 7.4) with 0.02% Sodium Azide, 10% Glycerol

Storage: Can be stored at +4C. For long term storage, aliquot and store at -20C. Avoid repeated freezing and thawing cycles.

Usage: The antibody has been tested by ELISA, Western blot analysis, Flow cytometry and ICC/IF to assure specificity and reactivity. Since application varies, however, each investigation should be titrated by the reagent to obtain optimal results.

Recommended starting dilution is 1:500.

Application: ELISA, WB, Flow cytometry, ICC/IF

For research use only. This product is not intended or approved for human, diagnostics or veterinary use.



Manufactured for:

Immuno-Biological Laboratories, Inc. (IBL-America)

8201 Central Ave. NE, Suite P, Minneapolis, Minnesota 55432, USA

Phone: (888) 523-1246

Fax.: (763) 780-2988

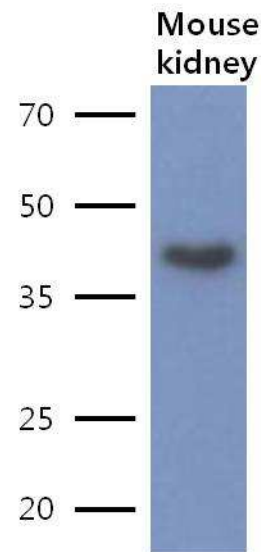
Email: info@ibl-america.com

Web: www.ibl-america.com

Product information

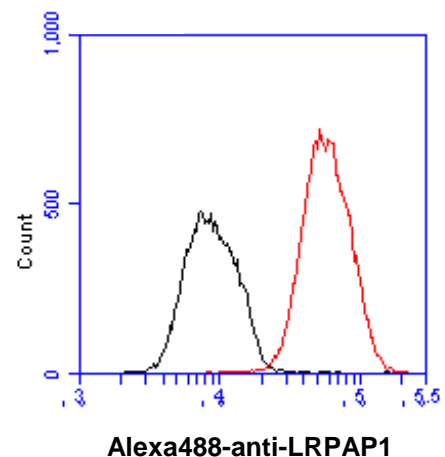
Western blot analysis

The lysate of Mouse kidney(40ug) were resolved by SDS-PAGE, transferred to PVDF membrane and probed with anti-human LRPAP1 antibody (1:500). Proteins were visualized using a goat anti-mouse secondary antibody conjugated to HRP and an ECL detection system.



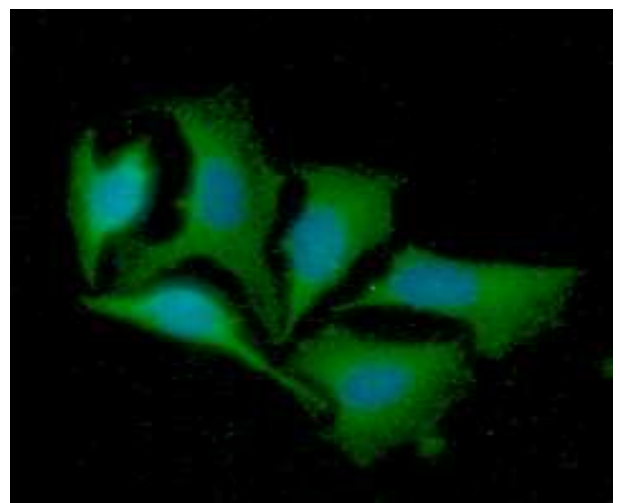
Flow cytometry

Flow cytometry analysis of LRPAP1 in Hep3B cell line, staining at 2-5ug for 1×10^6 cells (red line). The secondary antibody used goat anti-mouse IgG Alexa fluor 488 conjugate. Isotype control antibody was mouse IgG (black line).



ICC/IF analysis

ICC/IF analysis of LRPAP in HeLa cells line, stained with DAPI (Blue) for nucleus staining and monoclonal anti-human LRPAP1 antibody (1:100) with goat anti-mouse IgG-Alexa fluor 488 conjugate (Green).



General references: Kounnas. M.Z., *et al.* (1992) *J Biol Chem* **267(29)**: 21162-21166
 Bu. G., *et al.* (1995) *EMBO J* **14(10)**: 2269-2280

For research use only. This product is not intended or approved for human, diagnostics or veterinary use.