

Monoclonal anti-human BUB3 antibody (clone AT2H6)

Mouse IgG_{2b}, κ

Cat. No. IBATGA0319

Immunogen: Recombinant human BUB3 (1-328aa) purified from *E. coli*

NCBI Accession No.: NP_004716

Isotype: Mouse IgG_{2b} heavy chain and κ light chain

Clone: Anti-human BUB3 mAb, clone AT2H6, is derived from hybridization of mouse F0 myeloma cells with spleen cells from BALB/c mice immunized with a recombinant human BUB3 protein.

Description: BUB3 (budding uninhibited by benzimidazoles 3 homolog) is a conserved component of the mitotic spindle assembly complex (MCC). It contains five WD repeat domains and forms cell cycle constitutive complexes with BUB1 and BUBR1. BUB3 is essential for the kinetochore localization of BUB1 and BUBR1. As a component of the MCC, BUB3 is involved in the essential spindle checkpoint pathway that operates during early embryogenesis. The spindle checkpoint pathway functions to postpone the initiation of anaphase until chromosomes are properly attached to the spindle. This acts to ensure accurate chromosome segregation. In addition, BUB3 plays a role in regulating the establishment of correct kinetochore-microtubule attachments.

Concentration: 1 mg/ml

Form: Liquid. In Phosphate-Buffered Saline (pH 7.4) with 0.02% Sodium Azide, 10% Glycerol

Storage: Can be stored at +4C. For long term storage, aliquot and store at -20C. Avoid repeated freezing and thawing cycles.

Usage: The antibody has been tested by ELISA, Western blot analysis to assure specificity and reactivity. Since application varies, however, each investigation should be titrated by the reagent to obtain optimal results.

Recommended starting dilution is 1:1000

Application: ELISA, WB

For research use only. This product is not intended or approved for human, diagnostics or veterinary use.



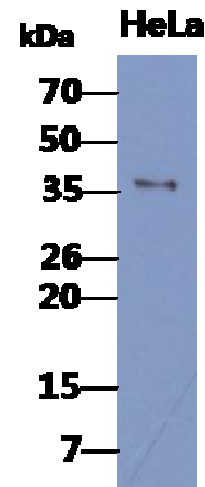
Manufactured for:

Immuno-Biological Laboratories, Inc. (IBL-America)
8201 Central Ave. NE, Suite P, Minneapolis, Minnesota 55432, USA
Phone: (888) 523-1246 Fax: (763) 780-2988
Email: info@ibl-america.com Web: www.ibl-america.com

Product information

Western blot analysis

The cell lysates of HeLa(40ug) were resolved by SDS-PAGE, transferred to PVDF membrane and probed with anti-human BUB3 antibody (1:1000). Proteins were visualized using a goat anti-mouse secondary antibody conjugated to HRP and an ECL detection system.



General references: Loqarinho. E., *et al.* (2008) *Mol Biol Cell* **19(4)**: 1798-1813
Warren. C.D., *et al.* (2002) *Mol Biol Cell* **13(9)**: 3029-3041
Taylor. S.S., *et al.* (1998) *J Cell Biol* **142(1)**: 1-11

For research use only. This product is not intended or approved for human, diagnostics or veterinary use.