

Monoclonal anti-human ASF1B antibody (clone AT1D4)

Mouse IgG_{2b}, κ

Cat. No. IBATGA0315

Immunogen: Recombinant human ASF1B (1-202aa) purified from *E. coli*

NCBI Accession No.: NP_060624

Isotype: Mouse IgG_{2b} heavy chain and κ light chain

Clone: Anti-human ASF1B mAb, clone AT1D4, is derived from hybridization of mouse F0 myeloma cells with spleen cells from BALB/c mice immunized with a recombinant human ASF1B protein.

Description: ASF1B is a member of the H3/H4 family of histone chaperone proteins and is similar to the anti-silencing function-1 gene in yeast. The encoded protein is the substrate of the tousel-like kinase family of cell cycle-regulated kinases, and may play a key role in modulating the nucleosome structure of chromatin by ensuring a constant supply of histones at sites of nucleosome assembly. Delivering histone H3/H4 dimers to CAF-1 or HIRA histone deposition complexes to facilitate replication-coupled and replication-independent nucleosome assembly on DNA. Both ASF1A and ASF1B are phosphorylated in S phase by the Tousel-like kinases TLK1 and TLK2, and are dephosphorylated when TLK1 and TLK2 are inactivated by Chk1 kinase in response to replicative stress.

Concentration: 1 mg/ml

Form: Liquid. In Phosphate-Buffered Saline (pH 7.4) with 0.02% Sodium Azide, 10% Glycerol

Storage: Can be stored at +4C. For long term storage, aliquot and store at -20C. Avoid repeated freezing and thawing cycles.

Usage: The antibody has been tested by ELISA, Western blot analysis to assure specificity and reactivity. Since application varies, however, each investigation should be titrated by the reagent to obtain optimal results.

Recommended starting dilution is 1:1000

Application: ELISA, WB

For research use only. This product is not intended or approved for human, diagnostics or veterinary use.



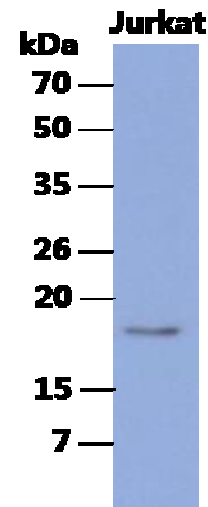
Manufactured for:
Immuno-Biological Laboratories, Inc. (IBL-America)
8201 Central Ave. NE, Suite P, Minneapolis, Minnesota 55432, USA
Phone: (888) 523-1246 Fax.: (763) 780-2988
Email: info@ibl-america.com Web: www.ibl-america.com

Product information

Western blot analysis

The cell lysates of Jurkat(40ug) were resolved by SDS-PAGE, transferred to PVDF membrane and probed with anti-human ASF1B antibody (1:1000).

Proteins were visualized using a goat anti-mouse secondary antibody conjugated to HRP and an ECL detection system.



General references:

- Corpet A., *et al.* (2011) *EMBO J* 30:480-493
Mousson F., *et al.* (2007) *Chromosoma* 116:79-93
Hayashi R., *et al.* (2007) *DNA Cell Biol* 126:91-99

For research use only. This product is not intended or approved for human, diagnostics or veterinary use.