

Monoclonal anti-human ITLN1 antibody (clone AT6C11)

Mouse IgG₁, κ

Cat. No. IBATGA0282

Immunogen: Recombinant human ITLN1 (17-313aa) purified from *E. coli*

NCBI Accession No.: NP_060095

Isotype: Mouse IgG₁ heavy chain and κ light chain

Clone: Anti-human ITLN1 mAb, clone AT6C11, is derived from hybridization of mouse F0 myeloma cells with spleen cells from BALB/c mice immunized with a recombinant human ITLN1 protein.

Description: ITLN1, also known as intelectin1 or omentin, has no effect on basal glucose uptake but enhances insulin-stimulated glucose uptake in adipocytes. ITLN1 may play a role in the defense system against microorganisms and specifically recognize carbohydrate chains of pathogens and bacterial components containing galactofuranosyl residues, in a calcium-dependent manner.

Concentration: 1 mg/ml

Form: Liquid. In Phosphate-Buffered Saline (pH 7.4) with 0.02% Sodium Azide, 10% Glycerol

Storage: Can be stored at +4°C. For long term storage, aliquot and store at -20°C. Avoid repeated freezing and thawing cycles.

Usage: The antibody has been tested by ELISA, Western blot analysis to assure specificity and reactivity. Since application varies, however, each investigation should be titrated by the reagent to obtain optimal results. Recommended starting dilution is 1:250.

Application: ELISA, WB

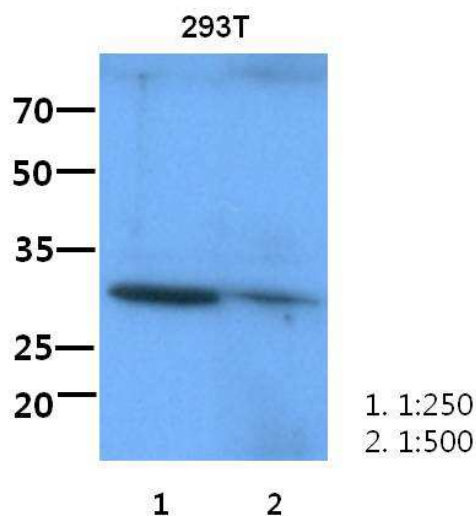
For research use only. This product is not intended or approved for human, diagnostics or veterinary use.



Manufactured for:
Immuno-Biological Laboratories, Inc. (IBL-America)
8201 Central Ave. NE, Suite P, Minneapolis, Minnesota 55432, USA
Phone: (888) 523-1246 Fax: (763) 780-2988
Email: info@ibl-america.com Web: www.ibl-america.com

Western blot analysis

The lysate of 293T (60ug) were resolved by SDS-PAGE, transferred to PVDF membrane and probed with anti-human ITLN1 antibody(1:250-1:500). Proteins were visualized using a goat anti-mouse secondary antibody conjugated to HRP and an ECL detection system.



General references: Tsuji S., et al. (2001) J. Biol. Chem. 276:23456-23463.
Tsuji S., et al. (2007) Glycobiology (10):1045-51

For research use only. This product is not intended or approved for human, diagnostics or veterinary use.