

Monoclonal anti-human PRPS1 antibody (clone AT1E11)

Mouse IgG_{2a}, κ

Cat. No. IBATGA0279

Immunogen: Recombinant human PRPS1 (1-318aa) purified from *E. coli*

NCBI Accession No.: NP_002755

Isotype: Mouse IgG_{2a} heavy chain and κ light chain

Clone: Anti-human PRPS1 mAb, clone AT1E11, is derived from hybridization of mouse F0 myeloma cells with spleen cells from BALB/c mice immunized with a recombinant human PRPS1 protein.

Description: PRPS1 is an enzyme that catalyzes the phosphorylation of ribose 5-phosphate to 5-phosphoribosyl-1-pyrophosphate, which is necessary for purine metabolism and nucleotide biosynthesis. A mutation in PRPS1 may result in PRPS superactivity, a disease characterized by gout and the overproduction of purine nucleotides, uric acid and PRPP. PRPS1 mutations can also lead to a reduction in PRPS1 activity resulting in ARTS syndrome or CMTX5 (Charcot-Marie-Tooth disease X-linked recessive type 5).

Concentration: 1 mg/ml

Form: Liquid. In Phosphate-Buffered Saline (pH 7.4) with 0.02% Sodium Azide, 10% Glycerol

Storage: Can be stored at +4C. For long term storage, aliquot and store at -20C. Avoid repeated freezing and thawing cycles.

Usage: The antibody has been tested by ELISA, Western blot analysis and ICC/IF to assure specificity and reactivity. Since application varies, however, each investigation should be titrated by the reagent to obtain optimal results.

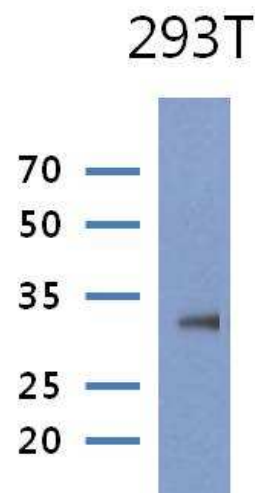
Application: ELISA, WB, ICC/IF

For research use only. This product is not intended or approved for human, diagnostics or veterinary use.

Product information

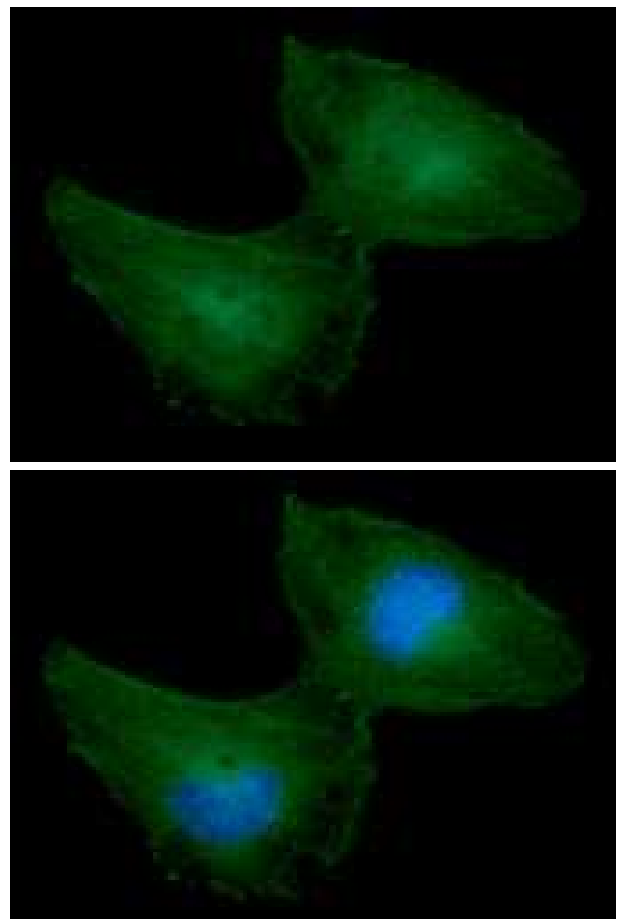
Western blot analysis

The cell lysate of 293T(30ug) were resolved by SDS-PAGE, transferred to PVDF membrane and probed with anti-human PRPS1 antibody (1:1000). Proteins were visualized using a goat anti-mouse secondary antibody conjugated to HRP and an ECL detection system.



ICC/IF analysis

ICC/IF analysis of PRPS1 in HeLa cells line, stained with DAPI (Blue) for nucleus staining and monoclonal anti-human PRPS1 antibody (1:100) with goat anti-mouse IgG-Alexa fluor 488 conjugate (Green).



General references: Ishizuka T., *et al.* (1992) *Biochim Biophys Acta*. **24**;1130(2): 139-48.
Kim HJ., *et al.* (2007) *Ann J Hum Genet*. **81(3)**: 552-8.

For research use only. This product is not intended or approved for human, diagnostics or veterinary use.