

## Monoclonal anti-human ADI1 antibody (clone AT27G8)

Mouse IgG<sub>1</sub>, κ

Cat. No. IBATGA0248

**Immunogen:** Recombinant human ADI1 (1-179aa) purified from *E. coli*

**NCBI Accession No.:** NP\_060739.1

**Isotype:** Mouse IgG<sub>1</sub> heavy chain and κ light chain

**Clone:** Anti-human ADI1 mAb, clone AT27E8, is derived from hybridization of mouse F0 myeloma cells with spleen cells from BALB/c mice immunized with a recombinant human ADI1 protein.

**Description:** ADI1 is an enzyme that belongs to the acireductone dioxygenase family of metal-binding enzymes, which are involved in methionine salvage. This enzyme may regulate mRNA processing in the nucleus, and may carry out different functions depending on its localization. Also, it down-regulates cell migration mediated by MMP14.

**Concentration:** 1 mg/ml

**Form:** Liquid. In Phosphate-Buffered Saline (pH 7.4) with 0.02% Sodium Azide, 10% Glycerol

**Storage:** Can be stored at +4C. For long term storage, aliquot and store at -20C. Avoid repeated freezing and thawing cycles.

**Usage:** The antibody has been tested by ELISA, Western blot analysis and ICC/IF to assure specificity and reactivity. Since application varies, however, each investigation should be titrated by the reagent to obtain optimal results.

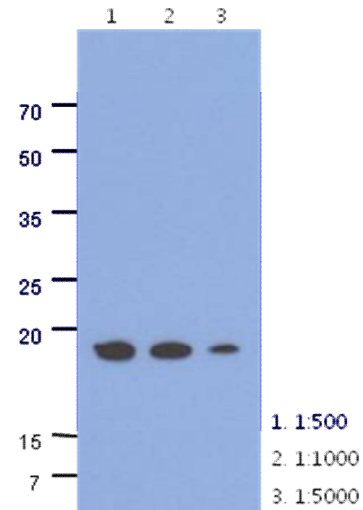
**Application:** ELISA, WB, ICC/IF

**For research use only. This product is not intended or approved for human, diagnostics or veterinary use.**

# Product information

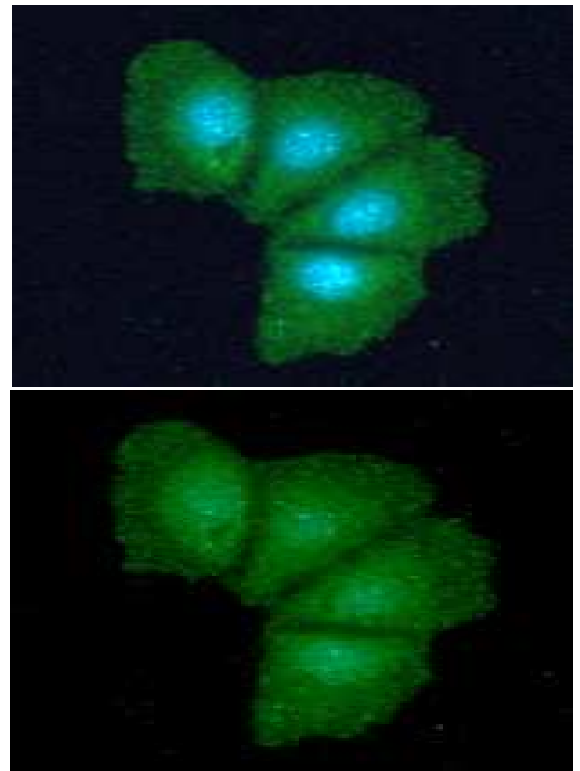
## Western blot analysis

The cell lysates of HepG2 (40ug) were resolved by SDS-PAGE, transferred to PVDF membrane and probed with anti-human ADI1 antibody (1:500 ~ 1:1000). Proteins were visualized using a goat anti-mouse secondary antibody conjugated to HRP and an ECL detection system.



## ICC/IF analysis

ICC/IF analysis of ADI1 in Hep3B cells line, stained with DAPI (Blue) for nucleus staining and monoclonal anti-human ADI1 antibody (1:100) with goat anti-mouse IgG-Alexa fluor 488 conjugate (Green).



- General references:** Gotoh I, Uekita T, Seiki M (2007). *Genes Cells* **12** (1): 105–17.  
Oram SW, Ai J, Pagani GM, *et al.* (2007). *Neoplasia* **9** (8): 643–51.  
Yeh CT, Lai HY, Chen TC, *et al.* (2001). *J. Virol.* **75** (22): 11017–24.

For research use only. This product is not intended or approved for human, diagnostics or veterinary use.