

Monoclonal anti-human α -Synuclein antibody (clone AT1E10)

Mouse IgG₁, κ

Cat. No. IBATGA0244

Immunogen: Recombinant human α -synuclein (1-140aa) purified from *E. coli*.

NCBI Accession No.: NP_000336

Isotype: Mouse IgG₁ heavy chain and κ light chain

Clone: Anti-human α -synuclein mAb, clone AT1E10, is derived from hybridization of mouse F0 myeloma cells with spleen cells from BALB/c mice immunized with a recombinant human α -synuclein protein.

Description: Alpha-synuclein (amino acids 1-140), an acidic neuronal protein of 140 amino acids, is extremely heat-resistant and is natively unfolded with an extended structure primarily composed of random coils. α -synuclein has been suggested to be implicated in the pathogenesis of Parkinson's disease and related neurodegenerative disorders, and more recently, to be an important regulatory component of vesicular transport in neuronal cells.

Concentration: 1mg/ml

Form: Liquid. In Phosphate-Buffered Saline (pH 7.4) with 0.02% Sodium Azide, 10% Glycerol

Storage: Can be stored at +4°C. For long term storage, aliquot and store at -20°C. Avoid repeated freezing and thawing cycles.

Usage: The antibody has been tested by ELISA, Western blot analysis and ICC/IF to assure specificity and reactivity. Since application varies, however, each investigation should be titrated by the reagent to obtain optimal results.

Application: ELISA, WB, ICC/IF

For research use only. This product is not intended or approved for human, diagnostics or veterinary use.



Manufactured for:

Immuno-Biological Laboratories, Inc. (IBL-America)
8201 Central Ave. NE, Suite P, Minneapolis, Minnesota 55432, USA
Phone: (888) 523-1246 Fax.: (763) 780-2988
Email: info@ibl-america.com Web: www.ibl-america.com

Product information

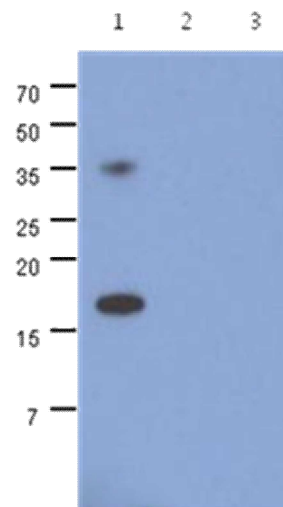
Western blot analysis

The recombinant human synuclein family (alpha-, beta- and gamma-) proteins (100ng) were resolved by SDS-PAGE, transferred to PVDF membrane and probed with anti-human alpha-synuclein antibody (1:500). Proteins were visualized using a goat anti-mouse secondary antibody conjugated to HRP and an ECL detection system.

Lane 1.: alpha-synuclein

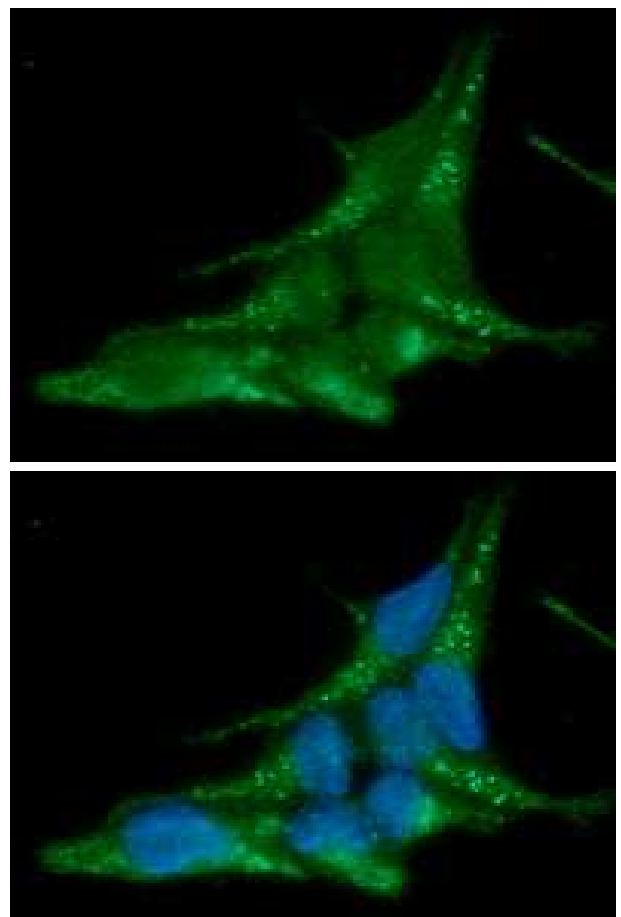
Lane 2.: beta-synuclein

Lane 3.: gamma-synuclein



ICC/IF analysis

ICC/IF analysis of α -synuclein in LnCap cells line, stained with DAPI (Blue) for nucleus staining and monoclonal anti-human α -synuclein antibody (1:100) with goat anti-mouse IgG-Alexa fluor 488 conjugate (Green)

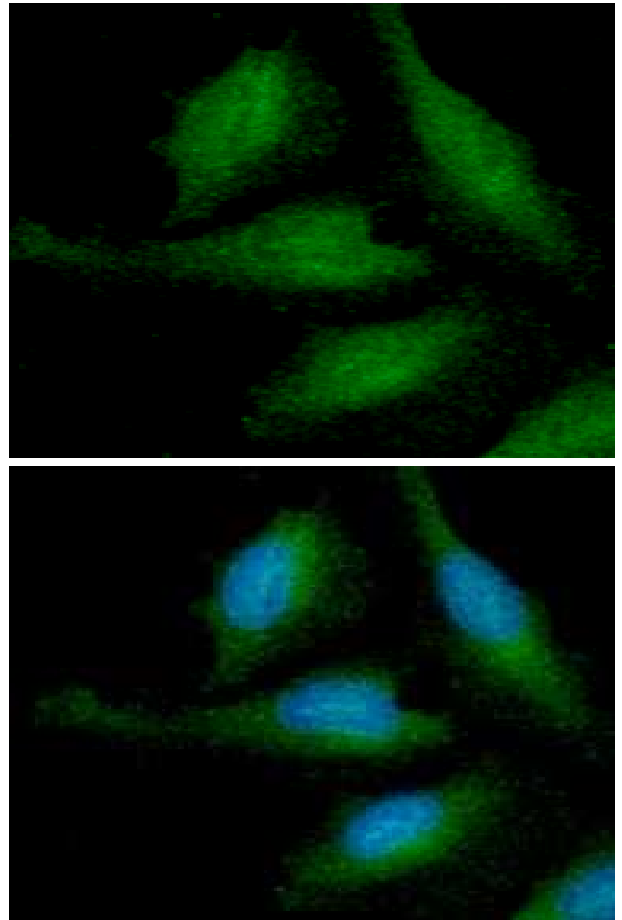


For research use only. This product is not intended or approved for human, diagnostics or veterinary use.

Product information

ICC/IF analysis

ICC/IF analysis of α -synuclein in HeLa cells line, stained with DAPI (Blue) for nucleus staining and monoclonal anti-human α -synuclein antibody (1:100) with goat anti-mouse IgG-Alexa fluor 488 conjugate (Green)



- General references:** Jakes, R., *et al.* (1994) *FEBS lett.* **345**: 27-32.
Ueda, K., *et al.* (1993) *Proc. Natl.Acad. Sci. USA* **90**: 11282-11286.
Kim, J. (1997) *Molecules and Cells.* **7**: 78-83.

For research use only. This product is not intended or approved for human, diagnostics or veterinary use.