

Monoclonal anti-human CISD1 antibody (clone AT1A8)

Mouse IgG₁, κ

Cat. No. IBATGA0242

Immunogen: Recombinant human CISD1 (32-108aa) purified from *E. coli*

NCBI Accession No.: NP_060934

Isotype: Mouse IgG₁ heavy chain and κ light chain

Clone: Anti-human CISD1 mAb, clone AT1A8, is derived from hybridization of mouse F0 myeloma cells with spleen cells from BALB/c mice immunized with a recombinant human CISD1 protein.

Description: CISD1 (CDGSH iron-sulfur domain-containing protein 1) is 108 amino acid protein. CISD1 plays a key role in regulating maximal capacity for electron transport and oxidative phosphorylation. May be involved in Fe-S cluster shuttling and/or in redox reactions. This protein expression is reduced in cells derived from cystic fibrosis patients.

Concentration: 1 mg/ml

Form: Liquid. In Phosphate-Buffered Saline (pH 7.4) with 0.02% Sodium Azide, 10% Glycerol

Storage: Can be stored at +4C. For long term storage, aliquot and store at -20C. Avoid repeated freezing and thawing cycles.

Usage: The antibody has been tested by ELISA, Western blot analysis and Flow cytometry to assure specificity and reactivity. Since application varies, however, each investigation should be titrated by the reagent to obtain optimal results.

Application: ELISA, WB, Flow cytometry

For research use only. This product is not intended or approved for human, diagnostics or veterinary use.

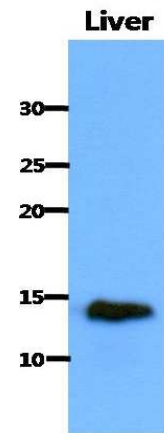


Manufactured for:
Immuno-Biological Laboratories, Inc. (IBL-America)
8201 Central Ave. NE, Suite P, Minneapolis, Minnesota 55432, USA
Phone: (888) 523-1246 Fax.: (763) 780-2988
Email: info@ibl-america.com Web: www.ibl-america.com

Product information

Western blot analysis

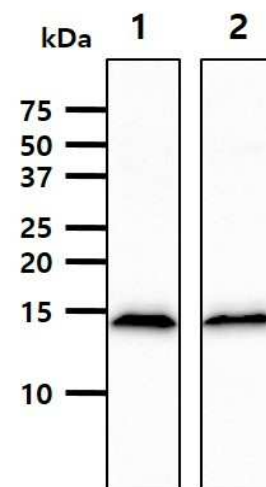
The extract of Mouse liver (40ug) were resolved by SDS-PAGE, transferred to PVDF membrane and probed with anti-human CISD1 antibody (1:1000). Proteins were visualized using a goat anti-mouse secondary antibody.



Western blot analysis

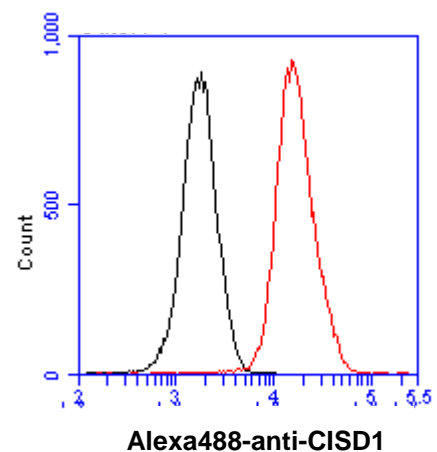
The cell lysates (40ug) were resolved by SDS-PAGE, transferred to PVDF membrane and probed with anti-human CISD1 antibody (1:1000). Proteins were visualized using a goat anti-mouse secondary antibody conjugated to HRP and an ECL detection system.

Lane 1.: K562 cell lysate
Lane 2.: MCF7 cell lysate



Flow cytometry

Flow cytometry analysis of CISD1 in THP-1 cell line, staining at 2-5ug for 1×10^6 cells (red line). The secondary antibody used goat anti-mouse IgG Alexa fluor 488 conjugate. Isotype control antibody was mouse IgG (black line).



- General references:** Wiley, S.E., *et al.* (2007) *J Biol Chem.* **282**: 23745-23749.
Paddock, M.L., *et al.* (2007) *Proc Natl Acad Sci USA.* **104**: 14342-14347.
Taminelli, G.L., *et al.* (2008) *Biochem Biophys Res Commun.* **365**: 856-862.

For research use only. This product is not intended or approved for human, diagnostics or veterinary use.