

Monoclonal anti-human FBP2 antibody (clone AT1E11)

Mouse IgG₁, κ

Cat. No. IBATGA0235

Immunogen: Recombinant human FBP2 (1-339aa) purified from *E. coli*

NCBI Accession No.: NP_003828

Isotype: Mouse IgG₁ heavy chain and κ light chain

Clone: Anti-human FBP2 mAb, clone AT1E11, is derived from hybridization of mouse F0 myeloma cells with spleen cells from BALB/c mice immunized with a recombinant human FBP2 protein.

Description: FBP2 (Fructose-1,6-bisphosphatase isozyme 2) is a 339 amino acid protein. FBP2 belongs to the FBPase class 1 family. The hydrolysis of fructose-1,6-bisphosphate to fructose-6-phosphate is a key reaction of carbohydrate metabolism. The enzyme that catalyzes this reaction appears to be present in all forms of living organisms. FBPase is encoded by two genes, FBP1 and FBP2, which express the liver and muscle isoforms, respectively. FBPase is regulated by AMP inhibition in most species. Inhibition of FBPase by AMP affects the turnover of bound substrate and not its affinity for substrate.

Concentration: 1 mg/ml

Form: Liquid. In Phosphate-Buffered Saline (pH 7.4) with 0.02% Sodium Azide, 10% Glycerol.

Storage: Can be stored at +4C. For long term storage, aliquot and store at -20C. Avoid repeated freezing and thawing cycles.

Usage: The antibody has been tested by ELISA, Western blot analysis to assure specificity and reactivity. Since application varies, however, each investigation should be titrated by the reagent to obtain optimal results. Recommended dilution range for Western blot analysis is 1:500 ~ 1:5000. Recommended starting dilution is 1:1000.

Application: ELISA, WB

For research use only. This product is not intended or approved for human, diagnostics or veterinary use.



Manufactured for:

Immuno-Biological Laboratories, Inc. (IBL-America)
8201 Central Ave. NE, Suite P, Minneapolis, Minnesota 55432, USA

Phone: (888) 523-1246

Fax.: (763) 780-2988

Email: info@ibl-america.com

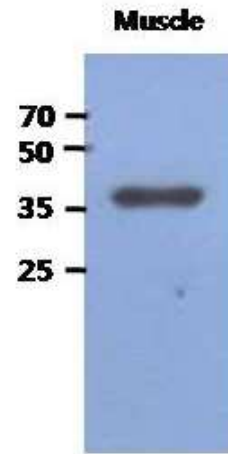
Web: www.ibl-america.com

Product information



Western blot analysis

The extracts of Mouse muscle (40ug) were resolved by SDS-PAGE, transferred to PVDF membrane and probed with anti-human FBP2 antibody (1:1000). Proteins were visualized using a goat anti-mouse secondary antibody conjugated to HRP and an ECL detection system.



General references:

- Dzugaj, A., *et al.* (1980) *Biochim Biophys Acta* **614**: 407-412
Marcus, F., *et al.* (1987) *Arch Biol Med Exp* **20**: 371-378
Matsuura, T., *et al.* (2002) *Mol Genet Metab* **76**: 207-210

For research use only. This product is not intended or approved for human, diagnostics or veterinary use.



Manufactured for:

Immuno-Biological Laboratories, Inc. (IBL-America)
8201 Central Ave. NE, Suite P, Minneapolis, Minnesota 55432, USA
Phone: (888) 523-1246 Fax.: (763) 780-2988
Email: info@ibl-america.com Web: www.ibl-america.com