

Monoclonal anti-human APOA1 antibody (clone AT1E12)

Mouse IgG_{2a}, κ

Cat. No. IBATGA0215

Immunogen: Recombinant human APOA1 (25-267aa) purified from *E. coli*

NCBI Accession No.: NP_000030.1

Isotype: Mouse IgG_{2a} heavy chain and κ light chain

Clone: Anti-human APOA1 mAb, clone AT1E12, is derived from hybridization of mouse F0 myeloma cells with spleen cells from BALB/c mice immunized with a recombinant human APOA1 protein.

Description: Apolipoprotein A1 (APOA1) is the main protein component of high density lipoprotein (HDL) in plasma. This protein promotes cholesterol efflux from tissues to the liver for excretion, and it is a cofactor for lecithin cholesterolacyltransferase (LCAT) which is responsible for the formation of most plasma cholesteryl esters. Defects in APOA1 are associated with HDL deficiencies, including Tangier disease, and with systemic non-neuropathic amyloidosis. High level of APOA1 is regarded as protective against atherosclerosis and cardiovascular disease.

Concentration: 1 mg/ml

Form: Liquid. In Phosphate-Buffered Saline (pH 7.4) with 0.02% Sodium Azide, 10% Glycerol.

Storage: Can be stored at +4C. For long term storage, aliquot and store at -20C. Avoid repeated freezing and thawing cycles.

Usage: The antibody has been tested by ELISA, Western blot analysis and Flow cytometry to assure specificity and reactivity. Since application varies, however, each investigation should be titrated by the reagent to obtain optimal results.

Application: ELISA, WB, Flow cytometry

For research use only. This product is not intended or approved for human, diagnostics or veterinary use.



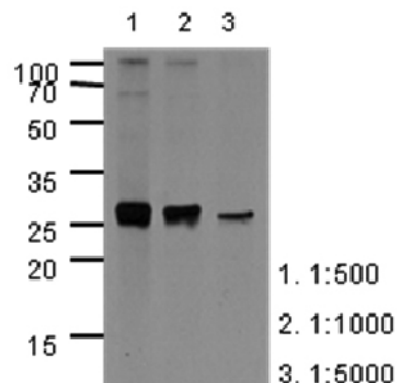
Manufactured for:
Immuno-Biological Laboratories, Inc. (IBL-America)
8201 Central Ave. NE, Suite P, Minneapolis, Minnesota 55432, USA
Phone: (888) 523-1246 Fax: (763) 780-2988
Email: info@ibl-america.com Web: www.ibl-america.com

Product information



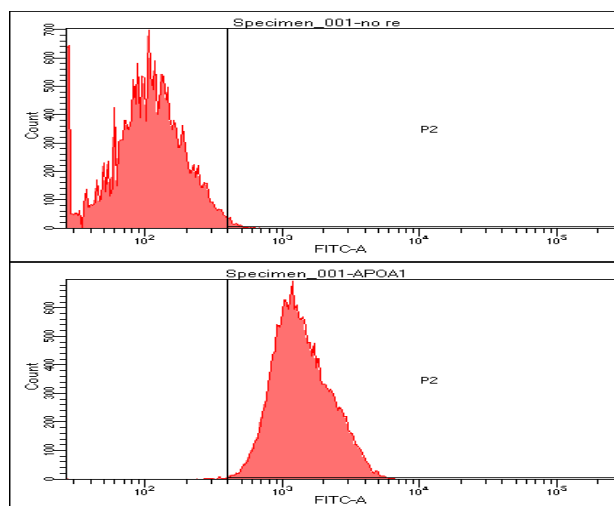
Western blot analysis

The extracts of HepG2(40ug) were resolved by SDS-PAGE, transferred to PVDF membrane and probed with anti-human APOA1 (1:500 ~ 1:5000). Proteins were visualized using a goat anti-mouse secondary antibody conjugated to HRP and an ECL detection system.



Flow cytometry

Flow cytometry analysis of APOA1 in Hep3B cell line, staining at 2-5ug for 1×10^6 cells. The secondary antibody used goat anti-mouse IgG Alexa fluor 488 conjugate.



General references: Dastani Z, *et al.* (March 2006). *Atherosclerosis* **185** (1): 127–36.
Chiesa G, Sirtori CR (2003). *Curr. Opin. Lipidol.* **14** (2): 159–63.
Pussinen, *et al.* (Jan. 1998). *J. Lipid Res. (UNITED STATES)* **39** (1): 152–61.

For research use only. This product is not intended or approved for human, diagnostics or veterinary use.



Manufactured for:
Immuno-Biological Laboratories, Inc. (IBL-America)
8201 Central Ave. NE, Suite P, Minneapolis, Minnesota 55432, USA
Phone: (888) 523-1246 Fax.: (763) 780-2988
Email: info@ibl-america.com Web: www.ibl-america.com