

Monoclonal anti-human EIF2S1 antibody (clone AT5E10)

Mouse IgG_{2b}, κ

Cat. No. IBATGA0208

Immunogen: Recombinant human EIF2S1 (1-315aa) purified from *E. coli*

NCBI Accession No.: NP_004085

Isotype: Mouse IgG_{2b} heavy chain and κ light chain

Clone: Anti-human EIF2S1 mAb, clone AT5E10, is derived from hybridization of mouse F0 myeloma cells with spleen cells from BALB/c mice immunized with a recombinant human EIF2S1 protein.

Description: Eukaryotic translation initiation factor 2, subunit 1 alpha (EIF2S1) is plays a central role in initiating translation, and provides for a rate-limiting step in protein synthesis. The phosphorylation of alpha-subunit of EIF2S1 effectively prevents formation of the EIF2S1/GTP/Met-tRNAⁱ complex and inhibits global protein synthesis.

Concentration: 1mg/ml

Form: Liquid. In Phosphate-Buffered Saline (pH 7.4) with 0.02% Sodium Azide, 10% Glycerol

Storage: Can be stored at +4°C. For long term storage, aliquot and store at -20°C. Avoid repeated freezing and thawing cycles.

Usage: The antibody has been tested by ELISA, Western blot analysis, Flow cytometry and ICC/IF to assure specificity and reactivity. Since application varies, however, each investigation should be titrated by the reagent to obtain optimal results.

Application: ELISA, WB, Flow cytometry, ICC/IF

For research use only. This product is not intended or approved for human, diagnostics or veterinary use.



Manufactured for:

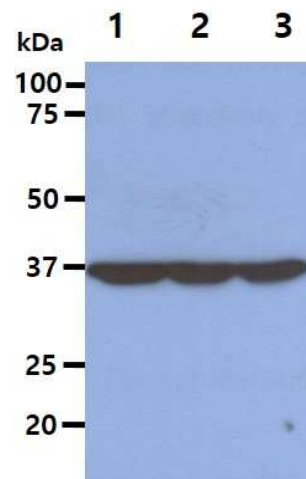
Immuno-Biological Laboratories, Inc. (IBL-America)
8201 Central Ave. NE, Suite P, Minneapolis, Minnesota 55432, USA
Phone: (888) 523-1246 Fax.: (763) 780-2988
Email: info@ibl-america.com Web: www.ibl-america.com

Product information

Western blot analysis

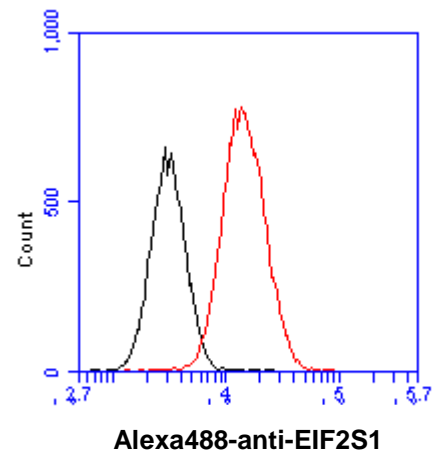
The Cell lysates (40ug) were resolved by SDS-PAGE, transferred to PVDF membrane and probed with anti-human EIF2S1 antibody (1:1000). Proteins were visualized using a goat anti-mouse secondary antibody conjugated to HRP and an ECL detection system.

Lane 1.: HeLa cell lysate
Lane 2.: Jurkat cell lysate
Lane 3.: NIH-3T3 cell lysate



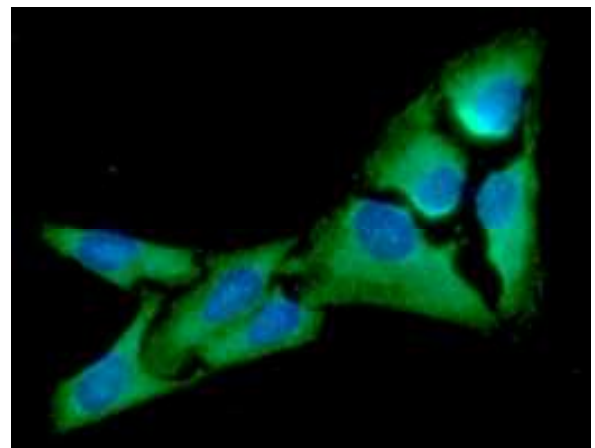
Flow cytometry

Flow cytometry analysis of EIF2S1 in HeLa cell line, staining at 2-5ug for 1×10^6 cells (red line). The secondary antibody used goat anti-mouse IgG Alexa fluor 488 conjugate. Isotype control antibody was mouse IgG (black line).



ICC/IF analysis

ICC/IF analysis of EIF2S1 in HeLa cells line, stained with DAPI (Blue) for nucleus staining and monoclonal anti-human EIF2S1 antibody (1:100) with goat anti-mouse IgG-Alexa fluor 488 conjugate (Green).



General references: Kim JH., *et al.* (2011) *EMBO J.* **30(12)**: 2454-2464.
Peña J., *et al.* (2011) *J Biol Chem.* **286(16)**: 14226-14236.
Muaddi H., *et al.* (2010) *Mol Biol Cel.* **21(18)**: 3220-3231.

For research use only. This product is not intended or approved for human, diagnostics or veterinary use.