

Human Calsequestrin 2/CASQ2 antibody

Catalog Number: IBATGA0202



PRODUCT INFORMATION

Catalog number

IBATGA0202

Clone No.

AT4E10

Product type

Monoclonal Antibody

UnitProt No.

O14958

NCBI Accession No.

NP_001223

Alternative Names

Cardiac muscle calsequestrin 2, PDIB2

PRODUCT SPECIFICATION

Antibody Host

Mouse

Reacts With

Human

Concentration

1mg/ml (determined by BCA assay)

Formulation

Liquid in. Phosphate-Buffered Saline (pH 7.4) with 0.02% Sodium Azide, 10% glycerol

Immunogen

Recombinant human CASQ2 (20-399aa) purified from E. coli

Isotype

IgG1 kappa

Purification Note

By protein-G affinity chromatography

Application

ELISA, WB, ICC/IF

Usage

The antibody has been tested by ELISA, Western blot and ICC/IF analysis to assure specificity and reactivity. Since application varies, however, each investigation should be titrated by the reagent to obtain optimal results.

Storage

For research use only. This product is not intended or approved for human, diagnostics or veterinary use.

Manufactured for:

Immuno-Biological Laboratories, Inc. (IBL-America)
8201 Central Ave. NE, Suite P, Minneapolis, Minnesota 55432, USA
Phone: (888) 523-1246 Fax.: (763) 780-2988
Email: info@ibl-america.com Web: www.ibl-america.com

Human Calsequestrin 2/CASQ2 antibody

Catalog Number: IBATGA0202



Can be stored at +2C to +8C for 1 week. For long term storage, aliquot and store at -20C to -80C. Avoid repeated freezing and thawing cycles.

BACKGROUND

Description

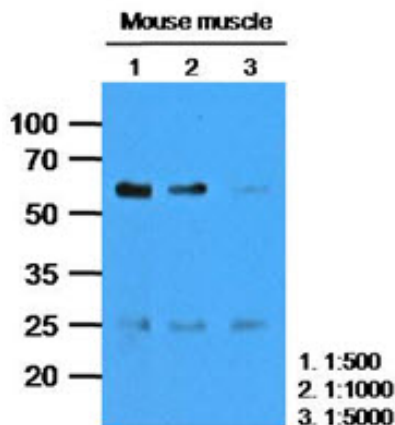
CASQ2 (Calsequestrin 2) protein responsible for holding Calcium together with other two proteins junction and triadin at the sarcoplasmic reticulum renders the heart vulnerable to severe cardiac arrhythmias, known as CPVT (catecholaminergic polymorphic ventricular tachycardia), during physical exercise.

General References

- Eckstein, A.K., et al. (2006) J. Clin. Endo. and Meta. 91: 3464-3470.
Paschke, R., et al (1995) Clin. Endo. 42: 565-569.
Bahn, R.S. (2003) J. Clin. Endo. and Meta. 88: 1939-1946.

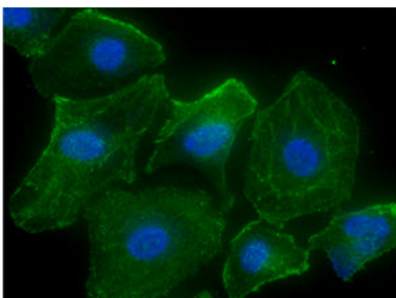
DATA

Western blot analysis (WB)



The tissue lysates of Mouse muscle (35ug) were resolved by SDS-PAGE, transferred to PVDF membrane and probed with anti-human CASQ2 (1:1000). Proteins were visualized using a goat anti-mouse secondary antibody conjugated to HRP and an ECL detection system.

Immunocytochemistry/Immunofluorescence (ICC/IF)



ICC/IF analysis of CASQ2 in HeLa cells. The cell was stained with ATGA0202 (1:100). The secondary antibody (green) was used Alexa Fluor 488. DAPI was stained the cell nucleus (blue).

For research use only. This product is not intended or approved for human, diagnostics or veterinary use.

Manufactured for:
Immuno-Biological Laboratories, Inc. (IBL-America)
8201 Central Ave. NE, Suite P, Minneapolis, Minnesota 55432, USA
Phone: (888) 523-1246 Fax.: (763) 780-2988
Email: info@ibl-america.com Web: www.ibl-america.com