

## Monoclonal anti-human EGFR antibody (clone AT6E3)

Mouse IgG<sub>2b</sub>, κ

Cat. No. IBATGA0197

**Immunogen:** Recombinant human EGFR (424-605aa) purified from *E. coli*

**NCBI Accession No.:** NP\_005219

**Isotype:** Mouse IgG<sub>2b</sub> heavy chain and κ light chain

**Clone:** Anti-human EGFR mAb, clone AT6E3, is derived from hybridization of mouse F0 myeloma cells with spleen cells from BALB/c mice immunized with a recombinant human EGFR protein.

**Description:** Epidermal growth factor receptor (EGFR) is a 170 kDa membrane protein first identified as a binding partner of EGF. Also, EGFR phosphorylated itself (autophosphorylation) in response to EGF treatment. The overexpression of EGFR in various epithelial tumors was widely reported and it has been substantiated that deregulation of EGFR itself and its signaling pathways an important role in human cancers.

**Concentration:** 1 mg/ml

**Form:** Liquid. In Phosphate-Buffered Saline (pH 7.4) with 0.02% Sodium Azide, 10% Glycerol

**Storage:** Can be stored at +4C. For long term storage, aliquot and store at -20C. Avoid repeated freezing and thawing cycles.

**Usage:** The antibody has been tested by ELISA, Western blot analysis, Flow cytometry and ICC/IF to assure specificity and reactivity. Since application varies, however, each investigation should be titrated by the reagent to obtain optimal results.

**Application:** ELISA, WB, Flow cytometry, ICC/IF

**For research use only. This product is not intended or approved for human, diagnostics or veterinary use.**



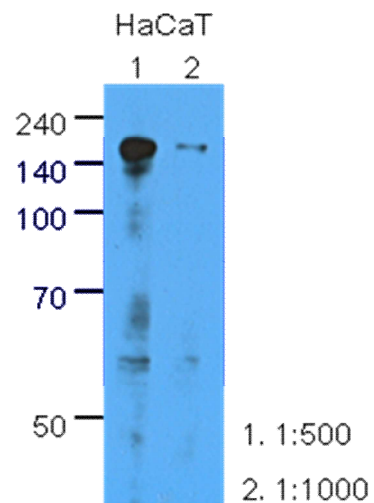
Manufactured for:

Immuno-Biological Laboratories, Inc. (IBL-America)  
8201 Central Ave. NE, Suite P, Minneapolis, Minnesota 55432, USA  
Phone: (888) 523-1246 Fax.: (763) 780-2988  
Email: [info@ibl-america.com](mailto:info@ibl-america.com) Web: [www.ibl-america.com](http://www.ibl-america.com)

# Product information

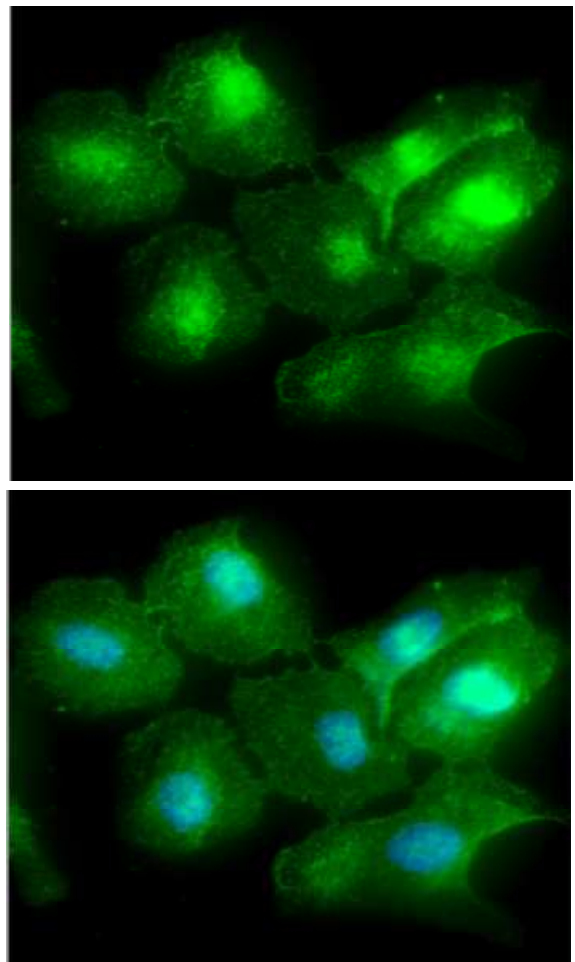
## Western blot analysis

The extracts of HaCaT (35ug) were resolved by SDS-PAGE, transferred to PVDF membrane and probed with anti-human EGFR (1:500 or 1000). Proteins were visualized using a goat anti-mouse secondary antibody conjugated to HRP and an ECL detection system.



## ICC/IF analysis

ICC/IF analysis of EGFR in HeLa cells line, stained with DAPI (Blue) for nucleus staining and monoclonal anti-human EGFR antibody (1:100) with goat anti-mouse IgG-Alexa fluor 488 conjugate (Green).



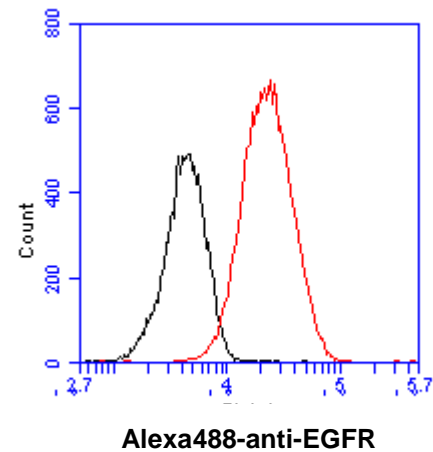
**For research use only. This product is not intended or approved for human, diagnostics or veterinary use.**

# Product information

---

## Flow cytometry

Flow cytometry analysis of EGFR in HeLa cell line, staining at 2-5ug for  $1 \times 10^6$  cells (red line). The secondary antibody used goat anti-mouse IgG Alexa fluor 488 conjugate. Isotype control antibody was mouse IgG (black line).



**General references:** Cohen S, (1964) *Nat Cancer Inst Monogr*, **13**: 13-27.  
Toyoda H, *et al.* (1995) *J Biol Chem*, **270**: 7495-500.  
Carpenter G, *et al.* (1978) *Nature*, **276**: 409-10.

---

**For research use only. This product is not intended or approved for human, diagnostics or veterinary use.**