

Monoclonal anti-human Bcl-2 antibody (clone AT1B5)

Mouse IgG_{2b}, κ

Cat. No. IBATGA0190

Immunogen: Recombinant human Bcl-2 (1-211aa) purified from *E. coli*

NCBI Accession No.: NP_000624

Isotype: Mouse IgG_{2b} heavy chain and κ light chain

Clone: Anti-human Bcl2 mAb, clone AT1B5, is derived from hybridization of mouse FO myeloma cells with spleen cells from BALB/c mice immunized with a recombinant human Bcl-2 protein.

Description: Bcl-2 (B-cell lymphoma protein 2 alpha) is an anti-apoptotic protein located primarily in the outer mitochondrial membrane. It blocks the apoptotic death of some cells such as lymphocytes. BCL-2 is thought to regulate cell death by controlling the mitochondrial membrane permeability during apoptosis. Bcl-2 protein has anti-apoptotic functions through inhibiting caspase activity either by preventing the release of cytochrome *c* from the mitochondria and/or by binding to the apoptosis-activating factor (APAF-1).

Concentration: 1 mg/ml

Form: Liquid. In Phosphate-Buffered Saline (pH 7.4) with 0.02% Sodium Azide, 10% Glycerol

Storage: Can be stored at +4°C. For long term storage, aliquot and store at -20°C or -70°C. Avoid repeated freezing and thawing cycles.

Usage: The antibody has been tested by ELISA, Western blot analysis, ICC/IF and Flow cytometry to assure specificity and reactivity. Since application varies, however, each investigation should be titrated by the reagent to obtain optimal results.

Application: ELISA, WB, ICC/IF, Flow cyt

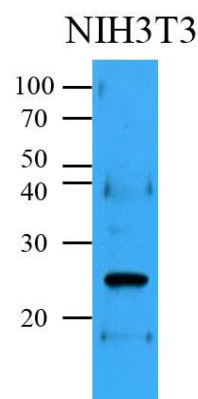
For research use only. This product is not intended or approved for human, diagnostics or veterinary use.



Manufactured for:
Immuno-Biological Laboratories, Inc. (IBL-America)
8201 Central Ave. NE, Suite P, Minneapolis, Minnesota 55432, USA
Phone: (888) 523-1246 Fax: (763) 780-2988
Email: info@ibl-america.com Web: www.ibl-america.com

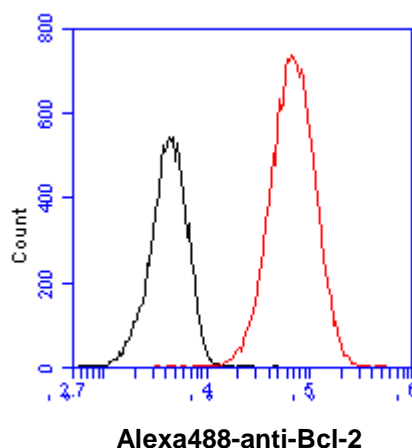
Western blot analysis

Cell lysates (35ug) were resolved by SDS-PAGE, transferred to PVDF membrane and probed with anti-human Bcl-2 (1:500). Proteins were visualized using a goat anti-mouse secondary antibody conjugated to HRP and an ECL detection system.



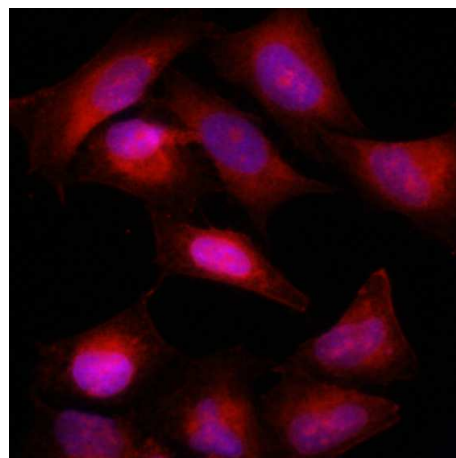
Flow cytometry

Flow cytometry analysis of Bcl-2 in HeLa cell line, staining at 2-5ug for 1×10^6 cells (red line). The secondary antibody used goat anti-mouse IgG Alexa fluor 488 conjugate. Isotype control antibody was mouse IgG (black line).



ICC/IF analysis

Immunofluorescence of HeLa cells stained with Hoechst 3342 (Blue) for nucleus staining and with monoclonal anti-human Bcl-2 antibody (1:500) with Texas Red (Red).

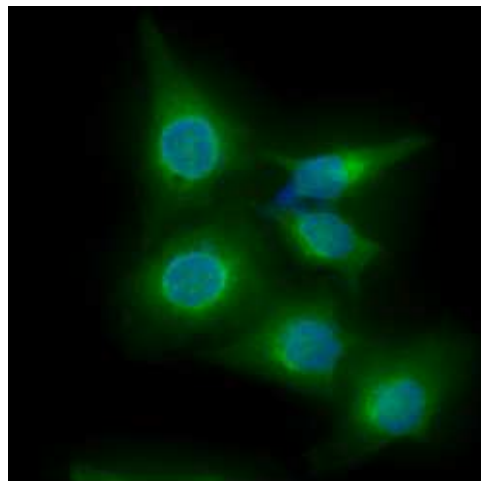


For research use only. This product is not intended or approved for human, diagnostics or veterinary use.

Product information

ICC/IF analysis

ICC/IF analysis of Bcl-2 in HeLa cells line, stained with DAPI (Blue) for nucleus staining and monoclonal anti-human Bcl-2 antibody (1:100) with goat anti-mouse IgG-Alexa fluor 488 conjugate (Green).



General references: Zamzami N., *et al.* (1998) *Oncogene*. 16(17):2265-82.
Fernandez-Sarabia MJ., *et al.* (1993) *Nature*. 366(6452):274-5.

For research use only. This product is not intended or approved for human, diagnostics or veterinary use.