

Monoclonal anti-human TUBB2b antibody (clone AT5B3)

Mouse IgG_{2a}, κ

Cat. No. IBATGA0187

Immunogen: Recombinant human TUBB2b (1-445aa) purified from *E. coli*

NCBI Accession No.: NP_821080

Isotype: Mouse IgG_{2a} heavy chain and κ light chain

Clone: Anti-human TUBB2b mAb, clone AT5B3, is derived from hybridization of mouse F0 myeloma cells with spleen cells from BALB/c mice immunized with a recombinant human TUBB2b protein.

Description: The protein encoded by this gene is a beta isoform of tubulin, which binds GTP and is a major component of microtubules. Multiple beta Tubulin isoforms have been characterized and are expressed in mammalian tissues. Tubulin is the major constituent of microtubules. It binds two moles of GTP, one at an exchangeable site on the beta chain and one at a non-exchangeable site on the alpha-chain. TUBB2b is mainly expressed in developing neurons with a dominant expression during the critical steps of corticogenesis. Also, TUBB2B a new critical gene involved in neuronal migration. It is present in the nuclei and nucleoplasm, Defects in this gene are a cause of asymmetric polymicrogyria.

Concentration: 1 mg/ml

Form: Liquid. In Phosphate-Buffered Saline (pH 7.4) with 0.02% Sodium Azide, 10% Glycerol.

Storage: Can be stored at +4°C. For long term storage, aliquot and store at -20°C or -70°C. Avoid repeated freezing and thawing cycles.

Usage: The antibody has been tested by ELISA, Western blot and Immunofluorescence analysis to assure specificity and reactivity. Since application varies, however, each investigation should be titrated by the reagent to obtain optimal results. Recommended dilution range for Western blot analysis and Immunofluorescence is 1:250 ~ 500.

For research use only. This product is not intended or approved for human, diagnostics or veterinary use.



Manufactured for:

Immuno-Biological Laboratories, Inc. (IBL-America)
8201 Central Ave. NE, Suite P, Minneapolis, Minnesota 55432, USA

Phone: (888) 523-1246 Fax.: (763) 780-2988

Email: info@ibl-america.com Web: www.ibl-america.com

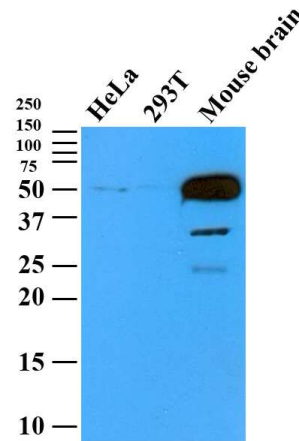
Product information

Recommended starting dilution is 1:250

Application: ELISA, WB, IFA/ICC, IHC

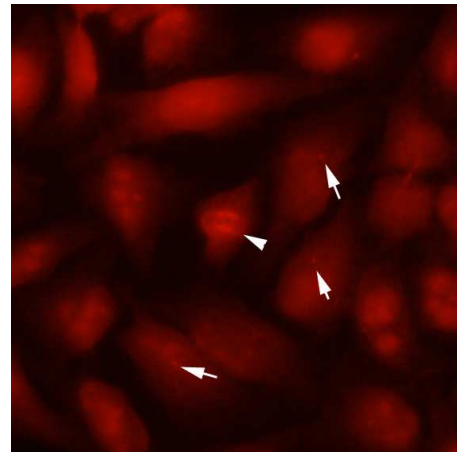
Western blot analysis

Cell lysates (35ug) were resolved by SDS-PAGE, transferred to PVDF membrane and probed with anti-human TUBB2b (1:500). Proteins were visualized using a goat anti-mouse secondary antibody conjugated to HRP and an ECL detection system.



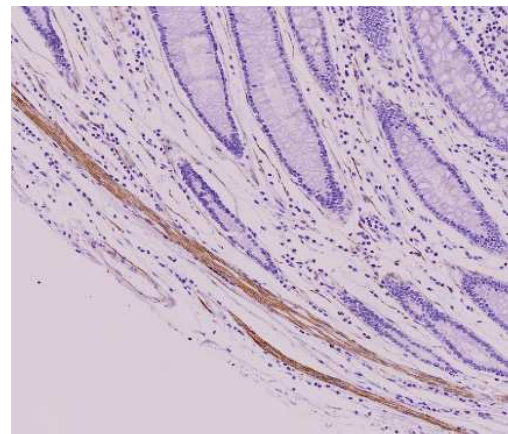
Immunofluorescence

Immunofluorescence of human SW480 cells stained with monoclonal anti-human TUBB2b antibody (1:250) with Texas Red (Red). Arrow head: Mitotic cell, Arrow: MTOC (microtubule organizing center).



Immunohistochemistry

Paraffin embedded sections of colorectal cancer tissue were incubated with anti-human TUBB2b antibody (1:50) for 2 hours at room temperature. Antigen retrieval was performed in 0.1M sodium citrate buffer and detected using Diaminobenzidine (DAB).



For research use only. This product is not intended or approved for human, diagnostics or veterinary use.

Product information

General references: Xavier Hubert Jaglin, *et al.* (2009) *Nat Genet*, **41**(6):746-52.
Bouwmeester T, *et al.* (2004) *Nat Cell Bio*, **6**(2):97-105.
Modig, C, *et al.* (1999) *Cell Motil Cytoskeleton*, **42**(4): 315-330.

For research use only. This product is not intended or approved for human, diagnostics or veterinary use.



Manufactured for:

Immuno-Biological Laboratories, Inc. (IBL-America)
8201 Central Ave. NE, Suite P, Minneapolis, Minnesota 55432, USA
Phone: (888) 523-1246 Fax.: (763) 780-2988
Email: info@ibl-america.com Web: www.ibl-america.com