

Product information

Monoclonal anti-human MAPK1 antibody (clone AT1A4)

Mouse IgG_{2b}, κ

Cat. No. IBATGA0182

Immunogen: Recombinant human MAPK1 (1-360aa) purified from *E. coli*

NCBI Accession No.: NP_620407

Isotype: Mouse IgG_{2b} heavy chain and κ light chain

Clone: Anti-human MAPK1 mAb, clone AT1A4, is derived from hybridization of mouse F0 myeloma cells with spleen cells from BALB/c mice immunized with a recombinant human MAPK1 protein.

Description: Mitogen-activated protein kinases (MAPKs) are reported to be critical regulatory factors for the growth and migration of various cell types including vascular smooth muscle cells (VSMCs). It has also been reported that the activation of the MAP kinase family, extracellular signal regulated kinases 1/2 (ERK1/2), and c-Jun N-terminal kinase (JNK) via Src activation is important for AII-induced migration of VSMCs. MAPKs are intracellular signal-transduction pathways that have been shown to play a central role in the development of injury following ischemia in the brain and heart. MAPKs regulate gene expression, which is important in cell injury/repair and proliferation/differentiation.

Concentration: 1 mg/ml

Form: Liquid. In Phosphate-Buffered Saline (pH 7.4) with 0.02% Sodium Azide, 10% Glycerol.

Storage: Can be stored at +4°C. For long term storage, aliquot and store at -20°C. Avoid repeated freezing and thawing cycles.

Usage: The antibody has been tested by ELISA, Western blot and Immunofluorescence analysis to assure specificity and reactivity. Since application varies, however, each investigation should be titrated by the reagent to obtain optimal results. Recommended dilution range for Western blot analysis and Immunofluorescence is 1:500 ~ 3000.

For research use only. This product is not intended or approved for human, diagnostics or veterinary use.



Manufactured for:

Immuno-Biological Laboratories, Inc. (IBL-America)
8201 Central Ave. NE, Suite P, Minneapolis, Minnesota 55432, USA

Phone: (888) 523-1246 Fax.: (763) 780-2988

Email: info@ibl-america.com Web: www.ibl-america.com

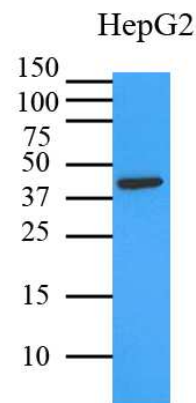
Product information

Recommended starting dilution is 1:500

Application: ELISA, WB, IFA/ICC

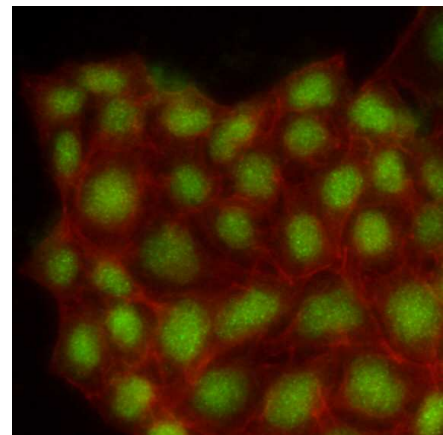
Western blot analysis

Cell lysates of HepG2 (35ug) were resolved by SDS-PAGE, transferred to PVDF membrane and probed with anti-human MAPK1 (1:3000). Proteins were visualized using a goat anti-mouse secondary antibody conjugated to HRP and an ECL detection system.



Immunofluorescence

Immunofluorescence of human MCF7 cells stained with Phalloidin-TRITC (Red) for Actin staining and monoclonal anti-human MAPK1 antibody (1:500) with Alexa 488 (Green).



General references: Le A, *et al.* (2010) *Proc Natl Acad Sci U S A*, **107**(5):2037-42.

Gesslein B, *et al.* (2010) *Mol Vis*,**16**:392-407.

Lai EW, *et al.* (2004) *J Invest Surg*, **17**:45-53.

For research use only. This product is not intended or approved for human, diagnostics or veterinary use.