

Monoclonal anti-human Maspin antibody (clone AT2N6)

Mouse IgG_{2b}, κ

Cat. No. IBATGA0167

Immunogen: Recombinant human Maspin (1-375aa) purified from *E. coli*

NCBI Accession No.: NP_002630

Isotype: Mouse IgG_{2b} heavy chain and κ light chain

Clone: Anti-human Maspin mAb, clone AT2N6, is derived from hybridization of mouse F0 myeloma cells with spleen cells from BALB/c mice immunized with a recombinant human Maspin protein.

Description: Serine (or cysteine) proteinase inhibitor clade B (ovalbumin) member 5, also known as Maspin, is a tumor suppressor protein of serine proteinase inhibitor family. It plays an essential role in embryonic development through critical roles in cell adhesion. Also, it is present in normal breast and prostatic epithelial cells but downregulated in the respective carcinomas.

Concentration: 1mg/ml

Form: Liquid. In Phosphate-Buffered Saline (pH 7.4) with 0.02% Sodium Azide, 10% Glycerol.

Storage: Can be stored at +4°C. For long term storage, aliquot and store at -20°C. Avoid repeated freezing and thawing cycles.

Usage: The antibody has been tested by ELISA, Western blot analysis, ICC/IF and Flow cytometry to assure specificity and reactivity. Since application varies, however, each investigation should be titrated by the reagent to obtain optimal results.

Application: ELISA, WB, ICC/IF, Flow cytometry

For research use only. This product is not intended or approved for human, diagnostics or veterinary use.



Manufactured for:

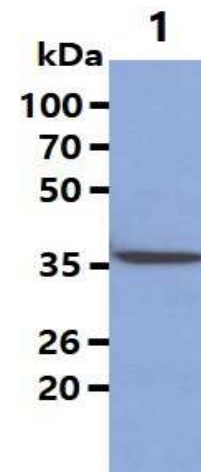
Immuno-Biological Laboratories, Inc. (IBL-America)
8201 Central Ave. NE, Suite P, Minneapolis, Minnesota 55432, USA
Phone: (888) 523-1246 Fax.: (763) 780-2988
Email: info@ibl-america.com Web: www.ibl-america.com

Product information

Western blot analysis

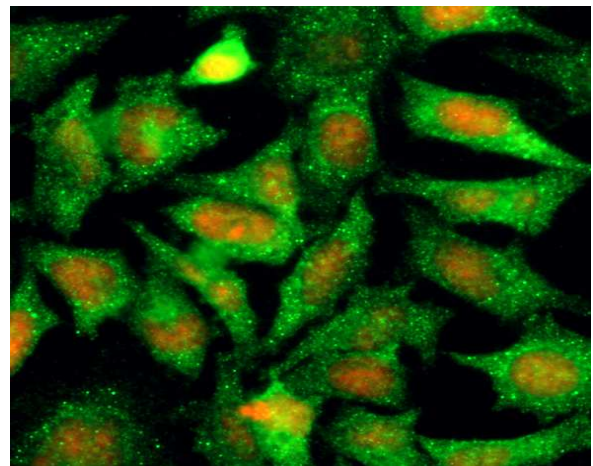
The Cell lysates (40ug) were resolved by SDS-PAGE, transferred to PVDF membrane and probed with anti-human Maspin antibody (1:1000). Proteins were visualized using a goat anti-mouse secondary antibody conjugated to HRP and an ECL detection system.

Lane 1.: HeLa cell lysate



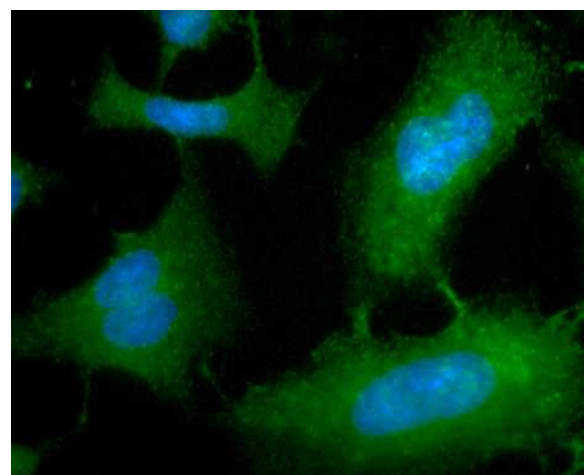
ICC/IF analysis

Immunofluorescence of human HeLa cells stained with PI (Red) and monoclonal anti-Maspin antibody (1:500) with Alexa 488 (Green).



ICC/IF analysis

ICC/IF analysis of Maspin in HeLa cells line, stained with DAPI (Blue) for nucleus staining and monoclonal anti-human Maspin antibody (1:100) with goat anti-mouse IgG-Alexa fluor 488 conjugate (Green).

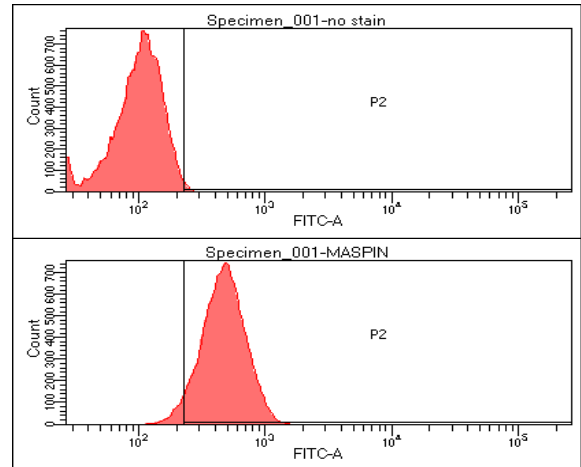


For research use only. This product is not intended or approved for human, diagnostics or veterinary use.

Product information

Flow cytometry

Flow cytometry analysis of Maspin in HeLa cell line, staining at 2-5ug for 1×10^6 cells. The secondary antibody used goat anti-mouse IgG Alexa fluor 488 conjugate.



General references: Lockett J., *et al.* (2006) *J Cell Biochem.* **97(4)**: 651-660.

Khalkhali Ellis Z., *et al.* (2006) *Clin Cancer Res.* **12(24)**: 7279-7283.

For research use only. This product is not intended or approved for human, diagnostics or veterinary use.