

## Monoclonal anti-human BRCC36 antibody (clone AT3B1)

Mouse IgG<sub>1</sub>, κ

Cat. No. IBATGA0159

**Immunogen:** Recombinant human BRCC36 (1-316aa) purified from *E. coli*

**NCBI Accession No.:** NP\_077308

**Isotype:** Mouse IgG<sub>1</sub> heavy chain and κ light chain

**Clone:** Anti-human BRCC36 mAb, clone AT3B1, is derived from hybridization of mouse F0 myeloma cells with spleen cells from BALB/c mice immunized with a recombinant human BRCC36 protein

**Description:** BRCC36 (BRCA1/BRCA2-containing complex, subunit 36) is a holoenzyme complex containing BRCA1, BRCA2. BRCC36 is an ubiquitin E3 ligase complex that has a role in DNA repair and enhances cellular survival following DNA damage. This protein is also thought to be involved in the cellular response to ionizing radiation and progression through the G2/M checkpoint

**Concentration:** 1 mg/ml

**Form:** Liquid. In Phosphate-Buffered Saline (pH 7.4) with 0.02% Sodium Azide, 10% Glycerol

**Storage:** Can be stored at +4C. For long term storage, aliquot and store at -20C. Avoid repeated freezing and thawing cycles.

**Usage:** The antibody has been tested by ELISA, Western blot analysis, Flow cytometry and ICC/IF to assure specificity and reactivity. Since application varies, however, each investigation should be titrated by the reagent to obtain optimal results.

**Application:** ELISA, WB, Flow cytometry, ICC/IF

**For research use only. This product is not intended or approved for human, diagnostics or veterinary use.**



Manufactured for:

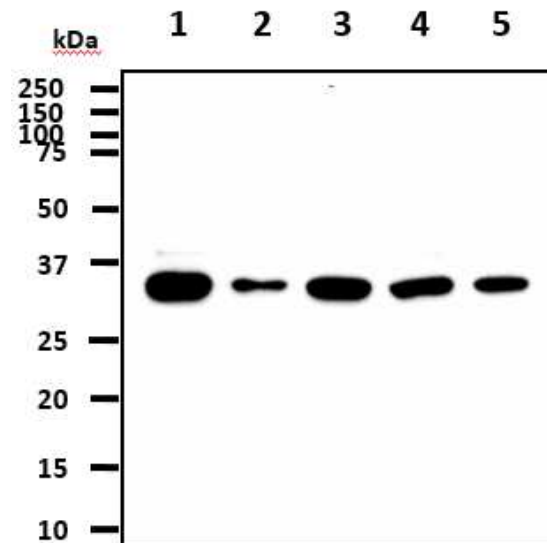
Immuno-Biological Laboratories, Inc. (IBL-America)  
8201 Central Ave. NE, Suite P, Minneapolis, Minnesota 55432, USA  
Phone: (888) 523-1246 Fax.: (763) 780-2988  
Email: [info@ibl-america.com](mailto:info@ibl-america.com) Web: [www.ibl-america.com](http://www.ibl-america.com)

# Product information

## Western blot analysis

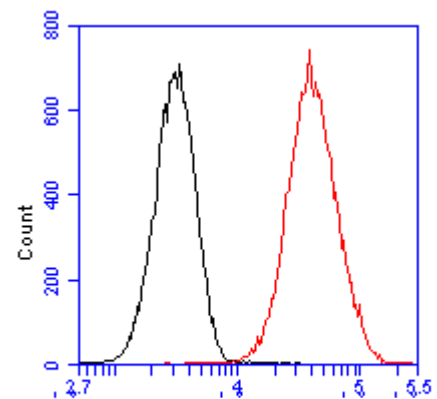
The cell lysates (40ug) were resolved by SDS-PAGE, transferred to PVDF membrane and probed with anti-human BRCC36 (1:1000). Proteins were visualized using a goat anti-mouse secondary antibody conjugated to HRP and an ECL detection system.

- Lane 1.: HeLa cell lysate
- Lane 2.: HepG2 cell lysate
- Lane 3.: 293T cell lysate
- Lane 4.: MCF7 cell lysate
- Lane 5.: NIH3T3 cell lysate.



## Flow cytometry

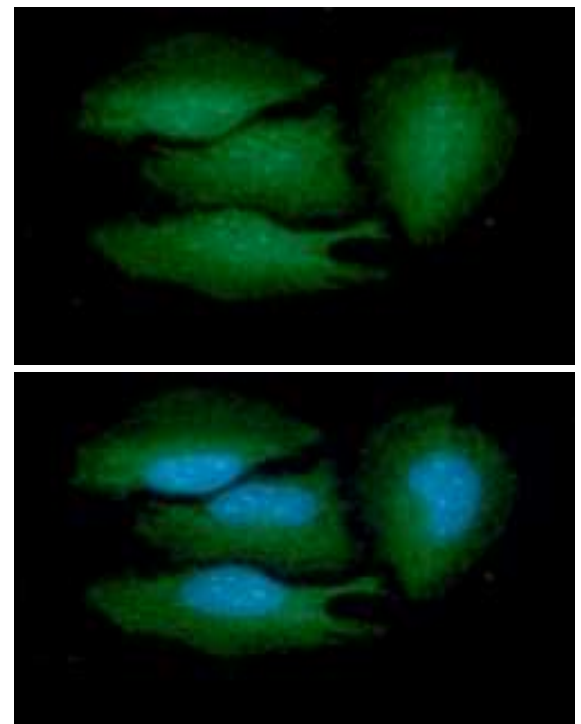
Flow cytometry analysis of BRCC36 in HeLa cell line, staining at 2-5ug for  $1 \times 10^6$  cells (red line). The secondary antibody used goat anti-mouse IgG Alexa fluor 488 conjugate. Isotype control antibody was mouse IgG (black line).



Alexa488-anti-BRCC36

## ICC/IF analysis

ICC/IF analysis of BRCC36 in HeLa cells line, stained with DAPI (Blue) for nucleus staining and monoclonal anti-human BRCC36 antibody (1:100) with goat anti-mouse IgG-Alexa fluor 488 conjugate (Green).



For research use only. This product is not intended or approved for human, diagnostics or veterinary use.

# Product information

---

**General references:** Wang Bin., *et al.* (2007) *Proc Natl Acad Sci USA*. **104(52)**: 20759-20763.  
Chen Xiaowei., *et al.* (2006) *Cancer Research*. **66**: 5039-5046.  
Dong Y., *et al.* (2003) *Mol Cell*. **12(5)**: 1087-1099.

---

**For research use only. This product is not intended or approved for human, diagnostics or veterinary use.**



*Manufactured for:*

Immuno-Biological Laboratories, Inc. (IBL-America)  
8201 Central Ave. NE, Suite P, Minneapolis, Minnesota 55432, USA  
Phone: (888) 523-1246 Fax.: (763) 780-2988  
Email: [info@ibl-america.com](mailto:info@ibl-america.com) Web: [www.ibl-america.com](http://www.ibl-america.com)