

Monoclonal anti-human Casein Kinase 1 alpha antibody (clone AT2E2)

Mouse IgG_{2b}, κ

Cat. No. IBATGA0149

Immunogen: Recombinant human Casein Kinase 1 alpha (1-337aa) purified from *E. coli*

NCBI Accession No.: NP_001883

Isotype: Mouse IgG_{2b} heavy chain and κ light chain

Clone: Anti-human Casein Kinase 1 alpha mAb, clone AT2E2, is derived from hybridization of mouse F0 myeloma cells with spleen cells from BALB/c mice immunized with a recombinant human Casein Kinase 1 alpha protein.

Description: Casein Kinase 1 alpha belongs to the protein kinase superfamily, CK1 Ser/Thr protein kinase family, Casein kinase I subfamily. CK1 isoforms (alpha, beta, gamma, delta, epsilon) and their splice variants are involved in diverse cellular processes including membrane trafficking, circadian rhythm, cell cycle progression, chromosome segregation, apoptosis and cellular differentiation. Perhaps it can phosphorylate a large number of proteins and is involved in Wnt signaling where it phosphorylates CTNNB1 on Ser45. Casein kinase 1 alpha also interacts with the Axin complex

Concentration: 1 mg/ml

Form: Liquid. In Phosphate-Buffered Saline (pH 7.4) with 0.02% Sodium Azide, 10% Glycerol

Storage: Can be stored at +4C. For long term storage, aliquot and store at -20C. Avoid repeated freezing and thawing cycles.

Usage: The antibody has been tested by ELISA and Western blot analysis and ICC/IF to assure specificity and reactivity. Since application varies, however, each investigation should be titrated by the reagent to obtain optimal results.

Application: ELISA, WB, ICC/IF

For research use only. This product is not intended or approved for human, diagnostics or veterinary use.



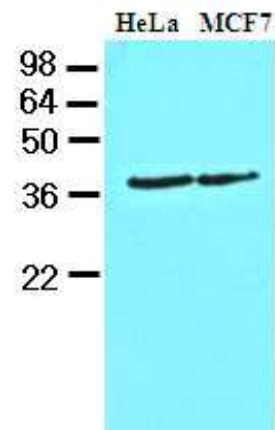
Manufactured for:

Immuno-Biological Laboratories, Inc. (IBL-America)
8201 Central Ave. NE, Suite P, Minneapolis, Minnesota 55432, USA
Phone: (888) 523-1246 Fax.: (763) 780-2988
Email: info@ibl-america.com Web: www.ibl-america.com

Product information

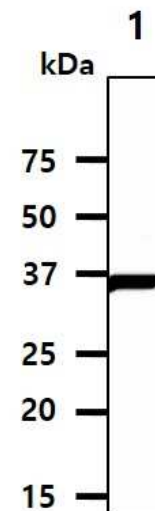
Western blot analysis

Cell lysates of HeLa and MCF7 (40ug) were resolved by SDS-PAGE, transferred to NC membrane and probed with anti-human Casein Kinase 1 alpha (1:1000). Proteins were visualized using a goat anti-mouse secondary antibody conjugated to HRP and an ECL detection system.



Western blot analysis

The cell lysates (40ug) were resolved by SDS-PAGE, transferred to PVDF membrane and probed with anti-human Casein kinase 1 alpha antibody (1:1000). Proteins were visualized using a goat anti-mouse secondary antibody conjugated to HRP and an ECL detection system.



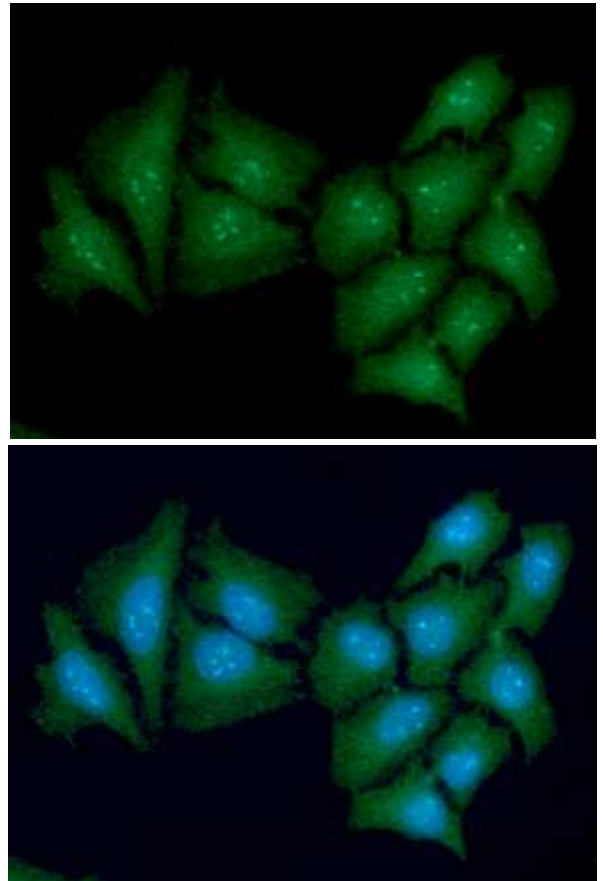
Lane 1.: Jurkat cell lysate

For research use only. This product is not intended or approved for human, diagnostics or veterinary use.

Product information

ICC/IF analysis

ICC/IF analysis of Casein Kinase 1 alpha in HeLa cells line, stained with DAPI (Blue) for nucleus staining and monoclonal anti-human Casein Kinase 1 alpha antibody (1:100) with goat anti-mouse IgG-Alexa fluor 488 conjugate (Green).



General references: Knippschild U., *et al.* (2005) *Onkologie*. **28(10)**: 508-14
Katoh M., (2007) *Clin Cancer Res*. **13(14)**: 4042-5

For research use only. This product is not intended or approved for human, diagnostics or veterinary use.