

## Monoclonal anti- ORF73/HHV8 antibody (clone AT4C11)

**Mouse IgG<sub>2a</sub>, κ**

**Cat. No. IBATGA0145**

**Immunogen:** Recombinant human ORF73/HHV8 (122-329aa) purified from *E. coli*

**NCBI Accession No.:** AAB62657

**Isotype:** Mouse IgG<sub>2a</sub> heavy chain and κ light chain

**Clone:** Anti-human ORF73/HHV8 mAb, clone AT4C11, is derived from hybridization of mouse F0 myeloma cells with spleen cells from BALB/c mice immunized with a recombinant human ORF73/HHV8 protein.

**Description:** ORF73 protein of human herpesvirus 8(HHV-8) is a Kaposi's sarcoma-associated herpesvirus (KSHV) latent protein which has been suspected of playing a crucial role in modulating viral and cellular gene expression. ORF73 is associated with cellular chromatin and stays on the chromosomes during cell division. It maintains the viral genomes during cell division by tethering the viral episomes to the chromosomes. It binds directly to replication origin recognition complexes (ORCs) that are primarily associated with the terminal repeat (TR) region of the HHV-8 genome.

**Concentration:** 1 mg/ml

**Form:** Liquid. In Phosphate-Buffered Saline (pH 7.4) with 0.02% Sodium Azide, 10% Glycerol.

**Storage:** Can be stored at +4°C. For long term storage, aliquot and store at -20°C. Avoid repeated freezing and thawing cycles.

**Usage:** The antibody has been tested by ELISA, Western blot and immunohistochemistry analysis to assure specificity and reactivity. Since application varies, however, each investigation should be titrated by the reagent to obtain optimal results. Recommended dilution range for Western blot is 1:1,000 ~ 1:2,000 and immunohistochemistry analysis is 1:50~100.

Recommended starting dilution for Western blot is 1:1,000 and Immunohistochemistry is 1:50.

---

**For research use only. This product is not intended or approved for human, diagnostics or veterinary use.**



Manufactured for:

Immuno-Biological Laboratories, Inc. (IBL-America)  
8201 Central Ave. NE, Suite P, Minneapolis, Minnesota 55432, USA

Phone: (888) 523-1246

Fax.: (763) 780-2988

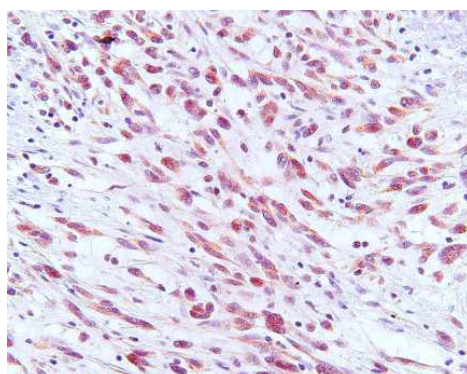
Email: [info@ibl-america.com](mailto:info@ibl-america.com)

Web: [www.ibl-america.com](http://www.ibl-america.com)

**Application:** ELISA, WB, IHC

## Immunohistochemistry

Paraffin embedded sections of Kaposi's sarcoma tissue were incubated with anti-ORF73/HHV8 (1:50) for 2 hours at room temperature. Antigen retrieval was performed in 0.1M sodium citrate buffer and detected using Diaminobenzidine (DAB)

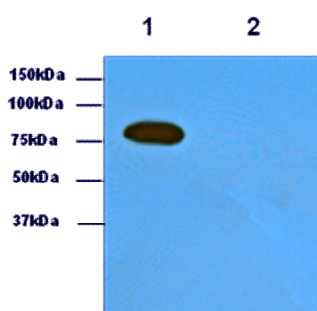


## Western blot analysis

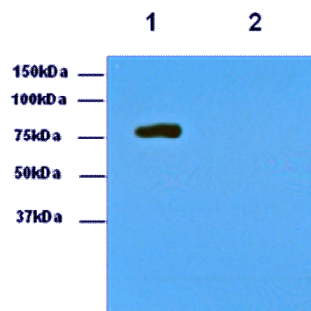
Transfected and non-transfected 293T cell lysates were resolved by SDS-PAGE, transferred to NC membrane and probed with anti-ORF73/HHV8 (1:1,000) and anti-MBP (1:1,000). Proteins were visualized using a goat anti-mouse secondary antibody conjugated to HRP and an ECL detection system.

A : ORF73/HHV8 clone AT4C11 antibody

B : MBP antibody (Cat No. AMB0710)



Lane 1 : 293T cell lysate transfected  
with ORF73/HHV8(122~329aa-MBP tagged)  
Lane 2 : Non-transfected 293T cell lysate



Lane 1 : 293T cell lysate transfected  
with ORF73/HHV8(122~329aa-MBP tagged)  
Lane 2 : Non-transfected 293T cell lysate

**For research use only. This product is not intended or approved for human, diagnostics or veterinary use.**



Manufactured for:

Immuno-Biological Laboratories, Inc. (IBL-America)  
8201 Central Ave. NE, Suite P, Minneapolis, Minnesota 55432, USA

Phone: (888) 523-1246

Fax.: (763) 780-2988

Email: [info@ibl-america.com](mailto:info@ibl-america.com)

Web: [www.ibl-america.com](http://www.ibl-america.com)

# Product information

---

**General references:** Kedes D.H., *et al.* (1997) *Journal of Clinical Investigation*. **100**: 2610–2606.

Verma SC., *et al* (2006) *Journal of Virology* **80**: 3445–3458.

---

**For research use only. This product is not intended or approved for human, diagnostics or veterinary use.**



*Manufactured for:*

Immuno-Biological Laboratories, Inc. (IBL-America)  
8201 Central Ave. NE, Suite P, Minneapolis, Minnesota 55432, USA

Phone: (888) 523-1246

Fax.: (763) 780-2988

Email: [info@ibl-america.com](mailto:info@ibl-america.com)

Web: [www.ibl-america.com](http://www.ibl-america.com)