

Monoclonal anti-human EPHX1 antibody (clone AT2E5)

Mouse IgG_{2a}, κ

Cat. No. IBATGA0143

Immunogen: Recombinant human EPHX1 (21-455aa) purified from *E. coli*

NCBI Accession No.: NP_000111

Isotype: Mouse IgG_{2a} heavy chain and κ light chain

Clone: Anti-human EPHX1 mAb, clone AT2E5, is derived from hybridization of mouse F0 myeloma cells with spleen cells from BALB/c mice immunized with a recombinant human EPHX1 protein.

Description: Epoxide hydrolase 1 (EPHX1) is a family of biotransformation enzyme which is involved in the hydrolysis of various epoxides and epoxide intermediates. Epoxide hydrolase plays an important role in both the activation and detoxification of exogenous chemicals such as polycyclic aromatic hydrocarbons.

Concentration: 1 mg/ml

Form: Liquid. In Phosphate-Buffered Saline (pH 7.4) with 0.02% Sodium Azide, 10% Glycerol

Storage: Can be stored at +4C. For long term storage, aliquot and store at -20C. Avoid repeated freezing and thawing cycles.

Usage: The antibody has been tested by ELISA, Western blot analysis, Flow cytometry and ICC/IF to assure specificity and reactivity. Since application varies, however, each investigation should be titrated by the reagent to obtain optimal results.

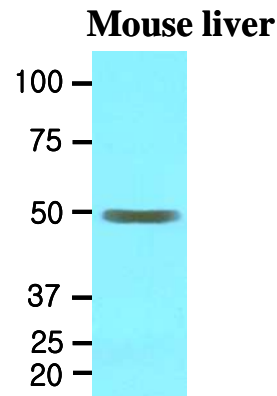
Application: ELISA, WB, Flow cytometry, ICC/IF

For research use only. This product is not intended or approved for human, diagnostics or veterinary use.

Product information

Western blot analysis

The extracts of mouse liver (30ug) were resolved by SDS-PAGE, transferred to NC membrane and probed with anti-human EPHX1 (1:1000). Proteins were visualized using a goat anti-mouse secondary antibody conjugated to HRP and an ECL detection system.

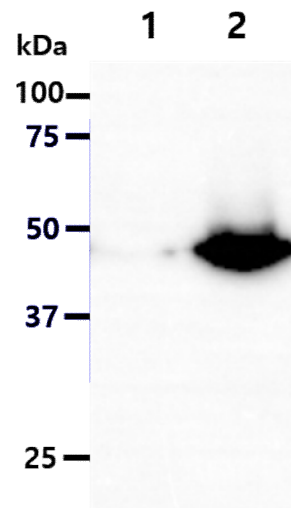


Western blot analysis

The cell lysates (10ug) were resolved by SDS-PAGE, transferred to PVDF membrane and probed with anti-human EPHX1 (1:500). Proteins were visualized using a goat anti-mouse secondary antibody conjugated to HRP and an ECL detection system.

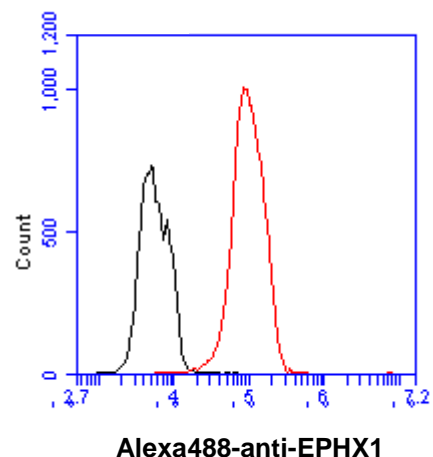
Lane 1 : 293T cell lysate

Lane 2 : EPHX1 transfected 293T cell lysate



Flow cytometry

Flow cytometry analysis of EPHX1 in Hep3B cell line, staining at 2-5ug for 1×10^6 cells (red line). The secondary antibody used goat anti-mouse IgG Alexa fluor 488 conjugate. Isotype control antibody was mouse IgG (black line).

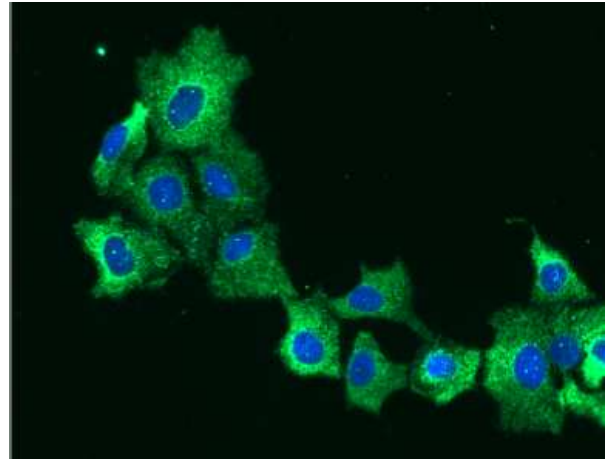


For research use only. This product is not intended or approved for human, diagnostics or veterinary use.

Product information

ICC/IF analysis

ICC/IF analysis of EPHX1 in Hep3B cells line, stained with DAPI (Blue) for nucleus staining and monoclonal anti-human EPHX1 antibody (1:100) with goat anti-mouse IgG-Alexa fluor 488 conjugate (Green).



General references: Bertvan Loo, *et al.*, (2006) *Appl Environ Microbiol.* **72(4)**: 2905-2917.
Janet K.C, *et al.*, (2001) *The Histochemical Journal.* **33**: 329-336.
Hassett C, *et al.*, (1994) *Genomics.* **23(2)**: 433-442

For research use only. This product is not intended or approved for human, diagnostics or veterinary use.