

Product information

Monoclonal anti-human CHI3L1 antibody (clone AT2C10)

Mouse IgG_{2b}, κ

Cat. No. IBATGA0141

Immunogen: Recombinant human CHI3L1 (22-383aa) purified from *E. coli*

NCBI Accession No.: NP_001267

Isotype: Mouse IgG_{2b} heavy chain and κ light chain

Clone: Anti-human CHI3L1 mAb, clone AT2C10, is derived from hybridization of mouse F0 myeloma cells with spleen cells from BALB/c mice immunized with a recombinant human CHI3L1 protein.

Description: Chitinase 3-Like-1 (CHI3L1) is a recently discovered human glycoprotein which is related in amino acid sequence to the chitinase protein family, but has no chitinase activity. CHI3L1 is upregulated in a number of cancers and in non-neoplastic disease states characterized by chronic inflammation and tissue remodeling. Its pattern of expression is associated with pathogenic processes related to inflammation, extracellular tissue remodeling, fibrosis and solid carcinomas. CHI3L1 may play an important role in the capacity of cells to respond to and cope with changes in their environment.

Concentration: 1 mg/ml

Form: Liquid. In Phosphate-Buffered Saline (pH 7.4) with 0.02% Sodium Azide, 10% Glycerol.

Storage: Can be stored at +4°C. For long term storage, aliquot and store at -20°C. Avoid repeated freezing and thawing cycles.

Usage: The antibody has been tested by ELISA and Western blot analysis to assure specificity and reactivity. Since application varies, however, each investigation should be titrated by the reagent to obtain optimal results. Recommended dilution range for Western blot analysis is 1:250 ~ 1500.

Recommended starting dilution is 1:500.

Application: ELISA, WB

For research use only. This product is not intended or approved for human, diagnostics or veterinary use.



Manufactured for:

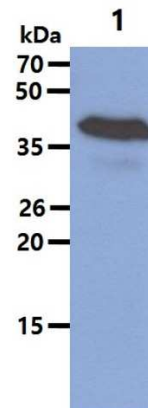
Immuno-Biological Laboratories, Inc. (IBL-America)
8201 Central Ave. NE, Suite P, Minneapolis, Minnesota 55432, USA
Phone: (888) 523-1246 Fax.: (763) 780-2988
Email: info@ibl-america.com Web: www.ibl-america.com

Product information

Western blot analysis

Cell lysates (40ug) were resolved by SDS-PAGE, transferred to PVDF membrane and probed with anti-human CHI3L1 (1:500). Proteins were visualized using a goat anti-mouse secondary antibody conjugated to HRP and an ECL detection system.

Lane 1.: SW480 cell lysate



General references: Kazakova MH, *et al.*, (2009) *Folia Med.* **51**(1):5–14

Bonneh-Barkay D, *et al.*, (2008) *Am J Pathol.* **173**(1):130–43

For research use only. This product is not intended or approved for human, diagnostics or veterinary use.