

Monoclonal anti-human PPIF antibody (clone AT1F5)

Mouse IgG_{2b}, κ

Cat. No. IBATGA0139

Immunogen: Recombinant human PPIF (30-207aa) purified from *E. coli*.

NCBI Accession No.: NP_005720

Isotype: Mouse IgG_{2b} heavy chain and κ light chain

Clone: Anti-human PPIF mAb, clone AT1F5, is derived from hybridization of mouse F0 myeloma cells with spleen cells from BALB/c mice immunized with a recombinant human PPIF protein.

Description: Cyclophilin F (also known as Peptidylprolyl isomerase F, PPIF) is a member of peptidyl-prolyl cis-trans isomerase family. They are highly-conserved cytoplasmic enzymes that accelerate protein folding. This protein is part of the mitochondrial permeability transition pore in the inner mitochondrial membrane. Activation of this pore is thought to be involved in the induction of apoptotic and necrotic cell death.

Concentration: 1mg/ml

Form: Liquid. In Phosphate-Buffered Saline (pH 7.4) with 0.02% Sodium Azide, 10% Glycerol

Storage: Can be stored at +4°C. For long term storage, aliquot and store at -20°C. Avoid repeated freezing and thawing cycles.

Usage: The antibody has been tested by ELISA and Western blot analysis, Flow cytometry and ICC/IF to assure specificity and reactivity. Since application varies, however, each investigation should be titrated by the reagent to obtain optimal results.

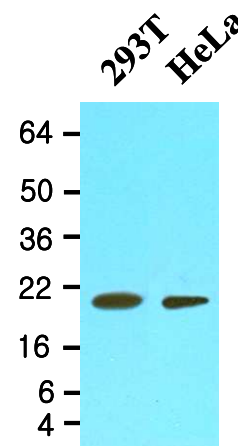
Application: ELISA, WB, Flow cytometry, ICC/IF, IHC

For research use only. This product is not intended or approved for human, diagnostics or veterinary use.

Product information

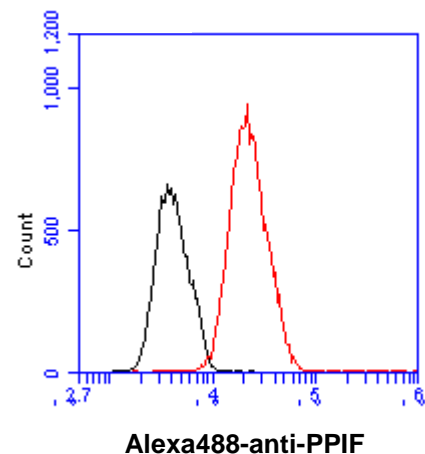
Western blot analysis

Cell lysates of 293T and HeLa (20ug) were resolved by SDS-PAGE, transferred to NC membrane and probed with anti-human PPIF (1:500). Proteins were visualized using a goat anti-mouse secondary antibody conjugated to HRP and an ECL detection system.



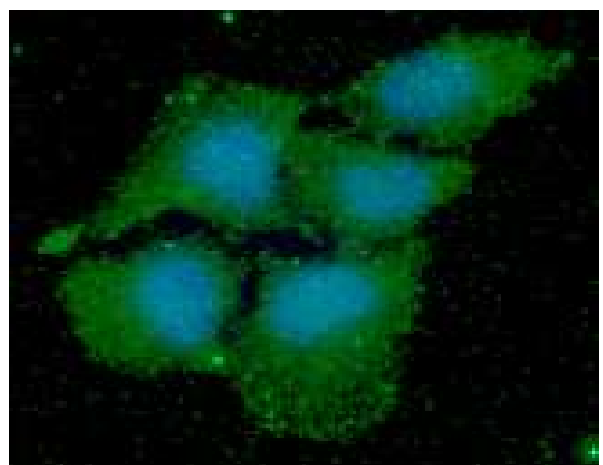
Flow cytometry

Flow cytometry analysis of PPIF in Hep3B cell line, staining at 2-5ug for 1×10^6 cells (red line). The secondary antibody used goat anti-mouse IgG Alexa fluor 488 conjugate. Isotype control antibody was mouse IgG (black line).



ICC/IF analysis

ICC/IF analysis of PPIF in HeLa cells line, stained with DAPI (Blue) for nucleus staining and monoclonal anti-human PPIF antibody (1:100) with goat anti-mouse IgG-Alexa fluor 488 conjugate (Green).

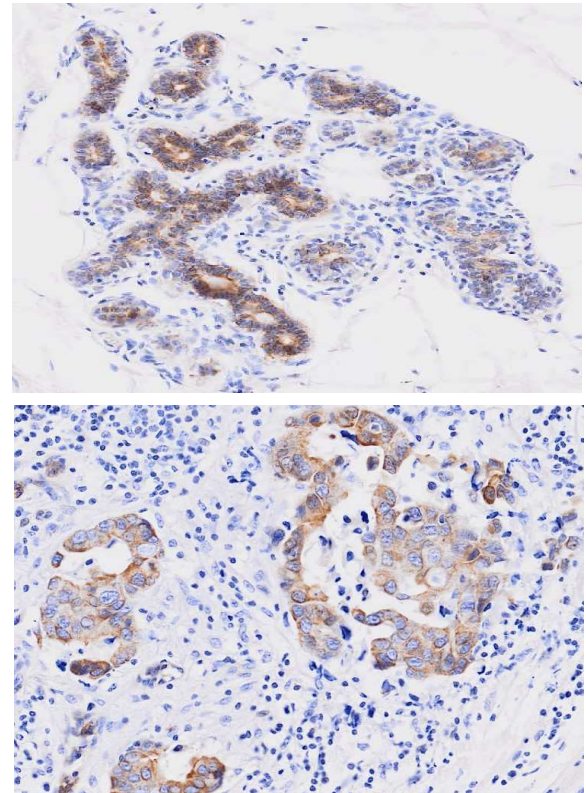


For research use only. This product is not intended or approved for human, diagnostics or veterinary use.

Product information

Immunohistochemistry

Paraffin embedded sections of human breast cancer tissue were incubated with anti-human PPIF (1:50) for 2 hours at room temperature. Antigen retrieval was performed in 0.1M sodium citrate buffer and detected using Diaminobenzidine (DAB)



Human breast cancer tissue

General references: Bowles KR, *et al.*, (2000) *Genomics* 67(2):109-127
Bergsma DJ, *et al.*, (1991) *J Biol Chem* 266(34):23204-23214

For research use only. This product is not intended or approved for human, diagnostics or veterinary use.