

## Monoclonal anti-human EIF5A antibody (clone AT4D1)

Mouse IgG<sub>1</sub>, κ

Cat. No. IBATGA0128

**Immunogen:** Recombinant human EIF5A (1-154aa) purified from *E. coli*

**NCBI Accession No.:** NP\_001961

**Isotype:** Mouse IgG<sub>1</sub> heavy chain and κ light chain

**Clone:** Anti-human EIF5A mAb, clone AT4D1, is derived from hybridization of mouse F0 myeloma cells with spleen cells from BALB/c mice immunized with a recombinant human EIF5A protein.

**Description:** Eukaryotic translation initiation factor 5A (eIF5A) is the only protein known to contain unusual amino acid formed by the action of deoxyhypusine synthase and deoxyhypusine hydroxylase using spermidine as the substrate. This protein was previously reported to be involved in the first step of peptide bond formation in translation; however more recent work implicates it as a universally conserved translation elongation factor. Modulation of eIF5A has been linked to proliferation and cancer.

**Concentration:** 1 mg/ml

**Form:** Liquid. In Phosphate-Buffered Saline (pH 7.4) with 0.02% Sodium Azide, 10% Glycerol

**Storage:** Can be stored at +4C. For long term storage, aliquot and store at -20C. Avoid repeated freezing and thawing cycles.

**Usage:** The antibody has been tested by ELISA, Western blot analysis, Flow cytometry and ICC/IF to assure specificity and reactivity. Since application varies, however, each investigation should be titrated by the reagent to obtain optimal results.

**Application:** ELISA, WB, Flow cytometry, ICC/IF

For research use only. This product is not intended or approved for human, diagnostics or veterinary use.



Manufactured for:

Immuno-Biological Laboratories, Inc. (IBL-America)  
8201 Central Ave. NE, Suite P, Minneapolis, Minnesota 55432, USA  
Phone: (888) 523-1246 Fax.: (763) 780-2988  
Email: [info@ibl-america.com](mailto:info@ibl-america.com) Web: [www.ibl-america.com](http://www.ibl-america.com)

# Product information

## Western blot analysis

The cell lysates (40ug) were resolved by SDS-PAGE, transferred to PVDF membrane and probed with anti-human EIF5A antibody (1:1000). Proteins were visualized using a goat anti-mouse secondary antibody conjugated to HRP and an ECL detection system.

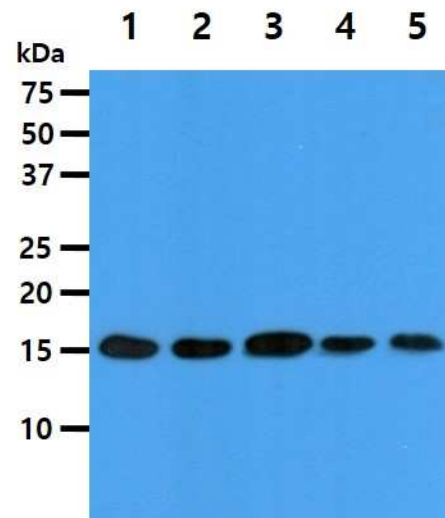
Lane 1.: Jurkat cell lysate

Lane 2.: 293T cell lysate

Lane 3.: HeLa cell lysate

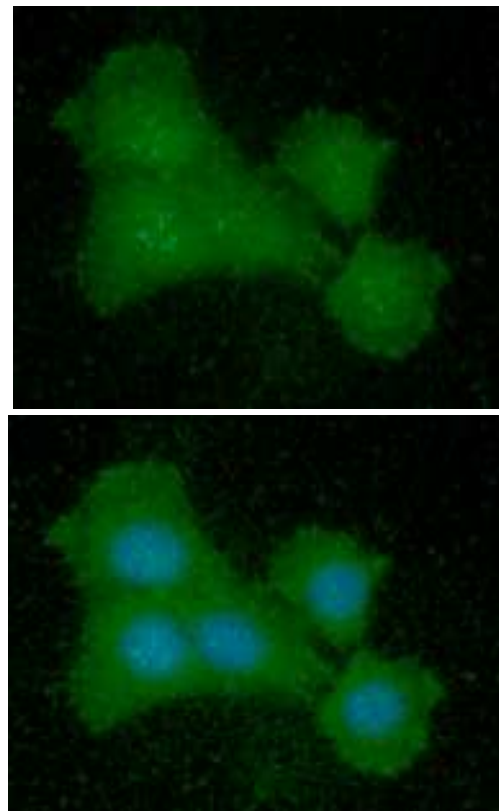
Lane 4.: MCF7 cell lysate

Lane 5.: NIH-3T3 cell lysate



## ICC/IF analysis

ICC/IF analysis of EIF5A in Balb/3T3 cells line, stained with DAPI (Blue) for nucleus staining and monoclonal anti-human EIF5A antibody (1:100) with goat anti-mouse IgG-Alexa fluor 488 conjugate (Green).



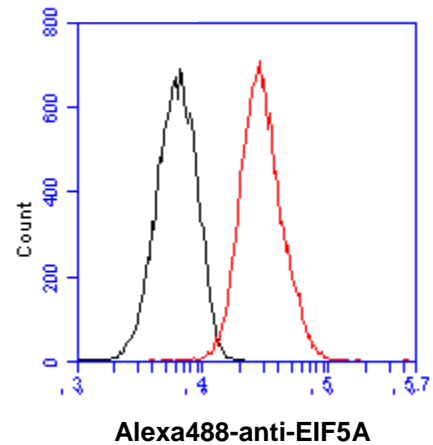
**For research use only. This product is not intended or approved for human, diagnostics or veterinary use.**

# Product information

---

## Flow cytometry

Flow cytometry analysis of EIF5A in Balb/3T3 cell line, staining at 2-5ug for  $1 \times 10^6$  cells (red line). The secondary antibody used goat anti-mouse IgG Alexa fluor 488 conjugate. Isotype control antibody was mouse IgG (black line).



**General references:** Saini P., *et al.* (2009) *Nature*. **459(7243)**: 118-21.  
Gosslau A., *et al.* (2009) *J Cell Physiol*. **219(2)**: 485-93.

---

For research use only. This product is not intended or approved for human, diagnostics or veterinary use.