

# Product information

## Monoclonal anti-human ADRM1 antibody (clone AT34C2)

Mouse IgG<sub>2b</sub>, κ

Cat. No. IBATGA0127

**Immunogen:** Recombinant human ADRM1 (1-407aa) purified from *E. coli*

**NCBI Accession No.:** NP\_783163

**Isotype:** Mouse IgG<sub>2b</sub> heavy chain and κ light chain

**Clone:** Anti-human ADRM1 mAb, clone AT34C2, is derived from hybridization of mouse F0 myeloma cells with spleen cells from BALB/c mice immunized with a recombinant human ADRM1 protein.

**Description:** ADRM1, also known as proteasomal ubiquitin receptor ADRM1, functions as a proteasomal ubiquitin receptor. This protein is an integral plasma membrane protein which promotes cell adhesion. ADRM1 is thought to undergo O-linked glycosylation. Expression of this gene has been shown to be induced by gamma interferon in some cancer cells.

**Concentration:** 1 mg/ml

**Form:** Liquid. In Phosphate-Buffered Saline (pH 7.4) with 0.02% Sodium Azide, 10% Glycerol

**Storage:** Can be stored at +4C. For long term storage, aliquot and store at -20C. Avoid repeated freezing and thawing cycles.

**Usage:** The antibody has been tested by ELISA, Western blot analysis, Flow cytometry and ICC/IF to assure specificity and reactivity. Since application varies, however, each investigation should be titrated by the reagent to obtain optimal results.

**Application:** ELISA, WB, Flow cytometry, ICC/IF

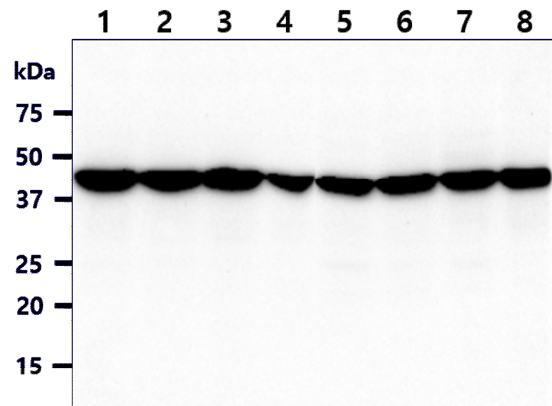
For research use only. This product is not intended or approved for human, diagnostics or veterinary use.

# Product information

## Western blot analysis

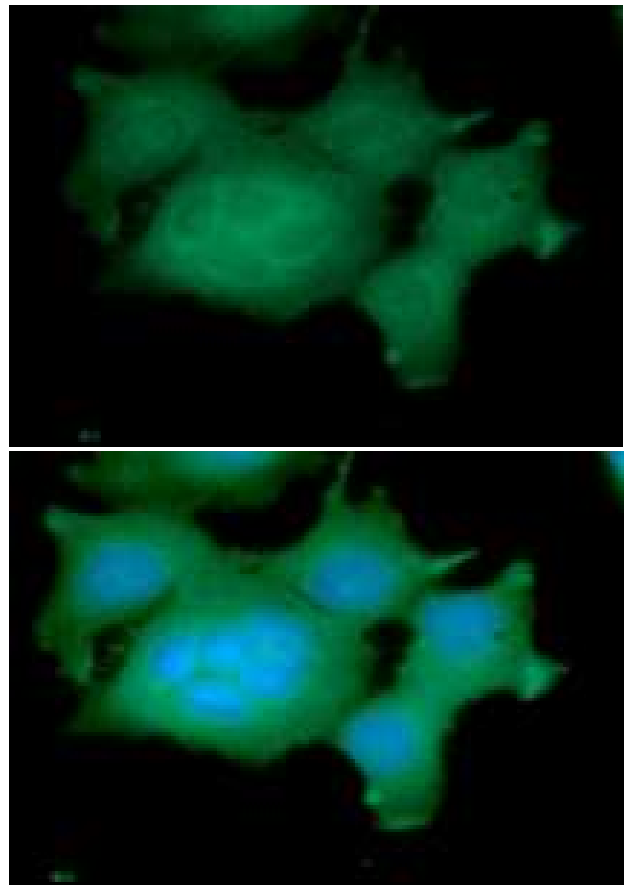
The cell lysates (40ug) were resolved by SDS-PAGE, transferred to PVDF membrane and probed with anti-human ADRM1 antibody (1:1000). Proteins were visualized using a goat anti-mouse secondary antibody conjugated to HRP and an ECL detection system.

- Lane 1 : MCF7 cell lysate
- Lane 2 : HeLa cell lysate
- Lane 3 : K562 cell lysate
- Lane 4 : PC3 cell lysate
- Lane 5 : 293T cell lysate
- Lane 6 : HepG2 cell lysate
- Lane 7 : Jurkat cell lysate
- Lane 8 : U87MG cell lysate



## ICC/IF analysis

ICC/IF analysis of ADRM1 in MCF7 cells line, stained with DAPI (Blue) for nucleus staining and monoclonal anti-human ADRM1 antibody (1:100) with goat anti-mouse IgG-Alexa fluor 488 conjugate (Green).



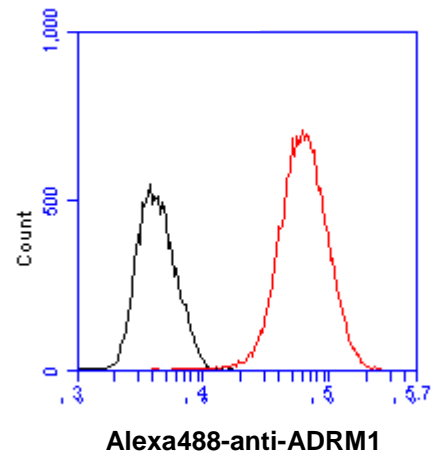
**For research use only. This product is not intended or approved for human, diagnostics or veterinary use.**

# Product information

---

## Flow cytometry

Flow cytometry analysis of ADRM1 in MCF7 cell line, staining at 2-5ug for  $1 \times 10^6$  cells (red line). The secondary antibody used goat anti-mouse IgG Alexa fluor 488 conjugate. Isotype control antibody was mouse IgG (black line).



**General references:** Hamazaki J., *et al.* (2006) *EMBO J.* **25**: 4524-4536.  
Qiu X.-B., *et al.* (2006) *EMBO J.* **25**: 5742-5753.

---

**For research use only. This product is not intended or approved for human, diagnostics or veterinary use.**