

## Monoclonal anti-human $\alpha$ , $\beta$ -Synuclein antibody (clone 3B6)

Mouse IgG<sub>1</sub>,  $\kappa$

Cat. No. IBASC0632

**Immunogen:** Recombinant human  $\alpha$ -synuclein (119-140aa) purified from *E. coli*

**NCBI Accession No.:** NP\_000336

**Isotype:** Mouse IgG<sub>1</sub> heavy chain and  $\kappa$  light chain

**Clone:** Anti-human  $\alpha$ , $\beta$ -synuclein mAb, clone 3B6, is derived from hybridization of mouse SP2/O myeloma cells with spleen cells from BALB/c mice immunized with a recombinant human  $\alpha$ -synuclein protein.

**Description:**  $\alpha$ -synuclein (amino acids 119-140), an acidic neuronal protein of 140 amino acids, is extremely heat-resistant and is natively unfolded with an extended structure primarily composed of random coils.  $\alpha$ -synuclein has been suggested to be implicated in the pathogenesis of Parkinson's disease and related neurodegenerative disorders, and more recently, to be an important regulatory component of vesicular transport in neuronal cells. Specially, the non-A $\beta$  component of amyloid plaques is a highly amyloidogenic peptide consisting of 35 amino acids which was first identified associated with senile plaques in the Alzheimer's disease brain.

**Concentration:** 1 mg/ml

**Form:** Liquid. In Phosphate-Buffered Saline (pH 7.4) with 0.02% Sodium Azide, 10% Glycerol

**Storage:** Can be stored at +4C. For long term storage, aliquot and store at -20C. Avoid repeated freezing and thawing cycles.

**Usage:** The antibody has been tested by ELISA, Western blot analysis, Flow cytometry and ICC/IF to assure specificity and reactivity. Since application varies, however, each investigation should be titrated by the reagent to obtain optimal results.

**Application:** ELISA, WB, Flow cytometry, ICC/IF

For research use only. This product is not intended or approved for human, diagnostics or veterinary use.



Manufactured for:

Immuno-Biological Laboratories, Inc. (IBL-America)  
8201 Central Ave. NE, Suite P, Minneapolis, Minnesota 55432, USA  
Phone: (888) 523-1246 Fax.: (763) 780-2988  
Email: [info@ibl-america.com](mailto:info@ibl-america.com) Web: [www.ibl-america.com](http://www.ibl-america.com)

# Product information

## Western blot analysis

The recombinant protein(20ng) and tissue lysates (30ug) were resolved by SDS-PAGE, transferred to PVDF membrane and probed with anti-human  $\alpha,\beta$ -Synuclein antibody (1:1000). Proteins were visualized using a goat anti-mouse secondary antibody conjugated to HRP and an ECL detection system.

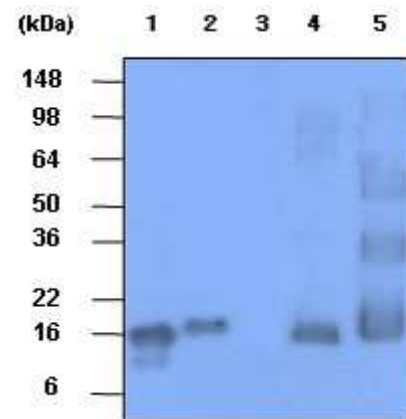
Lane 1.:  $\alpha$ - synuclein

Lane 2.:  $\beta$ - synuclein

Lane 3.:  $\gamma$ - synuclein

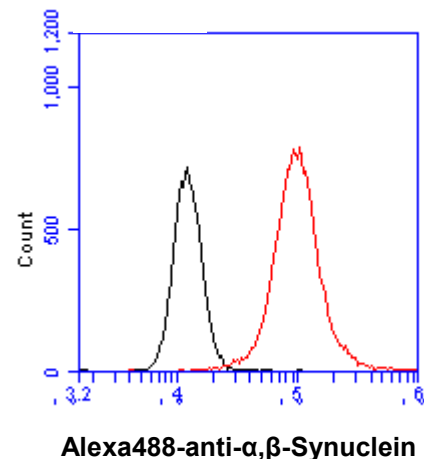
Lane 4.: Mouse Brain tissue lysate

Lane 5.: Rat Brain tissue lysate



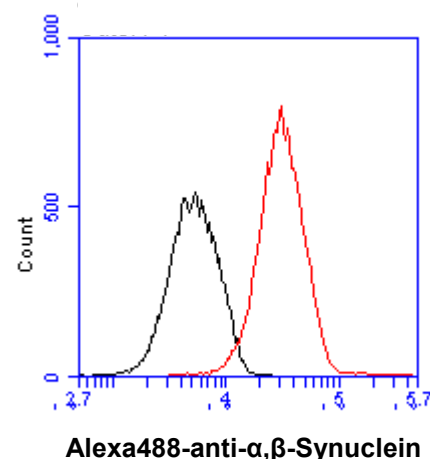
## Flow cytometry

Flow cytometry analysis of  $\alpha,\beta$ -Synuclein in LNCaP cell line, staining at 2-5ug for  $1 \times 10^6$  cells (red line). The secondary antibody used goat anti-mouse IgG Alexa fluor 488 conjugate. Isotype control antibody was mouse IgG (black line).



## Flow cytometry

Flow cytometry analysis of  $\alpha,\beta$ -Synuclein in U87MG cell line, staining at 2-5ug for  $1 \times 10^6$  cells (red line). The secondary antibody used goat anti-mouse IgG Alexa fluor 488 conjugate. Isotype control antibody was mouse IgG (black line).

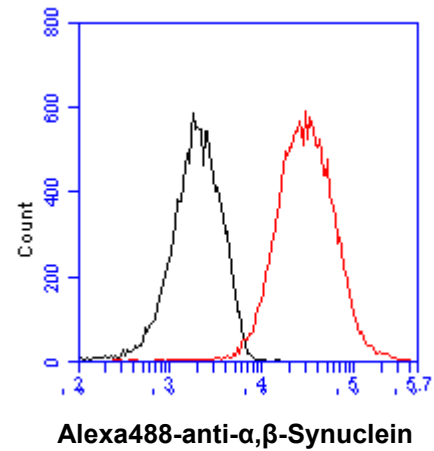


For research use only. This product is not intended or approved for human, diagnostics or veterinary use.

# Product information

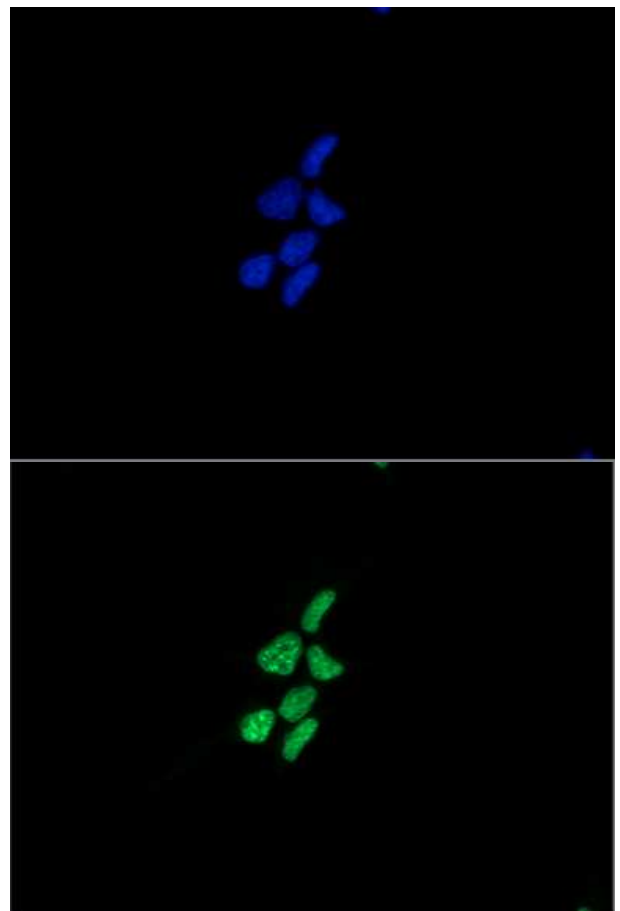
## Flow cytometry

Flow cytometry analysis of  $\alpha,\beta$ -Synuclein in C6 cell line, staining at 2-5 $\mu$ g for  $1 \times 10^6$  cells (red line). The secondary antibody used goat anti-mouse IgG Alexa fluor 488 conjugate. Isotype control antibody was mouse IgG (black line).



## ICC/IF analysis

ICC/IF analysis of  $\alpha,\beta$ -Synuclein in LNCaP cells line, stained with DAPI (Blue) for nucleus staining and monoclonal anti-human  $\alpha,\beta$ -Synuclein antibody (1:100) with goat anti-mouse IgG-Alexa fluor 488 conjugate (Green).

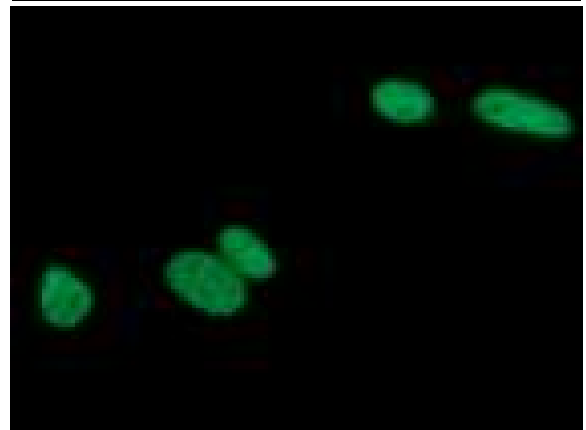


**For research use only. This product is not intended or approved for human, diagnostics or veterinary use.**

# Product information

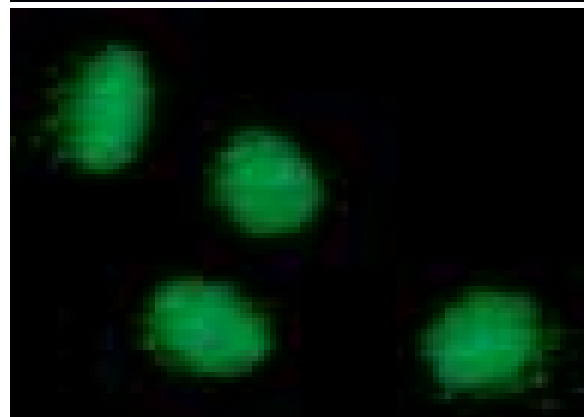
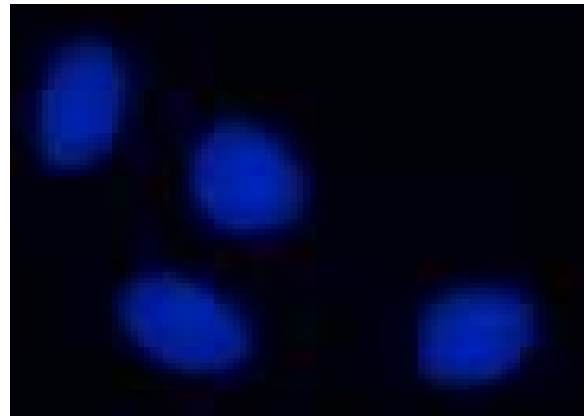
## ICC/IF analysis

ICC/IF analysis of  $\alpha,\beta$ -Synuclein in U87MG cells line, stained with DAPI (Blue) for nucleus staining and monoclonal anti-human  $\alpha,\beta$ -Synuclein antibody (1:100) with goat anti-mouse IgG-Alexa fluor 488 conjugate (Green).



## ICC/IF analysis

ICC/IF analysis of  $\alpha,\beta$ -Synuclein in C6 cells line, stained with DAPI (Blue) for nucleus staining and monoclonal anti-human  $\alpha,\beta$ -Synuclein antibody (1:100) with goat anti-mouse IgG-Alexa fluor 488 conjugate (Green).



For research use only. This product is not intended or approved for human, diagnostics or veterinary use.

# Product information

---

- General references:** Jakes R., *et al.* (1994) *FEBS lett.* **345**: 27-32.  
Ueda K., *et al.* (1993) *Proc. Natl.Acad. Sci. USA* **90**: 11282-11286.  
Kim J (1997) *Molecules and Cells.* **7**: 78-83.  
Paik S. R., *et al.* (1997) *Arch. Biochem. Biophys.* **344**: 325-334.

---

**For research use only. This product is not intended or approved for human, diagnostics or veterinary use.**



*Manufactured for:*  
Immuno-Biological Laboratories, Inc. (IBL-America)  
8201 Central Ave. NE, Suite P, Minneapolis, Minnesota 55432, USA  
Phone: (888) 523-1246 Fax.: (763) 780-2988  
Email: [info@ibl-america.com](mailto:info@ibl-america.com) Web: [www.ibl-america.com](http://www.ibl-america.com)