

# Human RASSF1A antibody

Catalog Number: IBARF0501



## PRODUCT INFORMATION

---

**Catalog number**

ARF0501

**Clone No.**

3F3

**Product type**

Monoclonal Antibody

**UnitProt No.**

Q9NS23

**NCBI Accession No.**

NP\_009113

**Alternative Names**

RASSF1(Ras association (RalGDS/AF-6) domain family 1),123F2, RDA32, NORE2A, RASSF1A, REH3P21, Ras association (RalGDS/AF-6) domain family member 1

## PRODUCT SPECIFICATION

---

**Antibody Host**

Mouse

**Reacts With**

Human

**Concentration**

1mg/ml (determined by BCA assay)

**Formulation**

Liquid in. Phosphate-Buffered Saline (pH 7.4) with 0.02% Sodium Azide, 10% glycerol

**Immunogen**

Recombinant human RASSF1A (1-340aa) purified from E. coli.

**Isotype**

IgG1 kappa

**Purification Note**

By protein-A affinity chromatography

**Application**

ELISA, WB, ICC/IF

**Usage**

The antibody has been tested by ELISA, Western blot and ICC/IF analysis to assure specificity and reactivity. Since application varies, however, each investigation should be titrated by the reagent to obtain optimal results.

---

**For research use only. This product is not intended or approved for human, diagnostics or veterinary use.**

*Manufactured for:*

Immuno-Biological Laboratories, Inc. (IBL-America)  
8201 Central Ave. NE, Suite P, Minneapolis, Minnesota 55432, USA

Phone: (888) 523-1246 Fax.: (763) 780-2988

Email: [info@ibl-america.com](mailto:info@ibl-america.com) Web: [www.ibl-america.com](http://www.ibl-america.com)

# Human RASSF1A antibody

Catalog Number: IBARF0501



## Storage

Can be stored at +2C to +8C for 1 week. For long term storage, aliquot and store at -20C to -80C. Avoid repeated freezing and thawing cycles.

## BACKGROUND

### Description

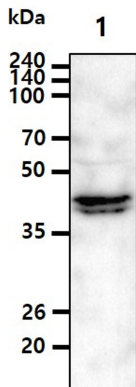
The tumor suppressor gene RASSF1A (3p21.3), human Ras association domain family 1A, is expressed in heart, brain, placenta, lung, liver, skeletal muscle, kidney, pancreas, spleen, thymus, prostate, testis, small intestine, colon, and peripheral blood leukocytes. RASSF1A expression is inhibited by hypermethylation of the CpG island including the promoter and early transcribed regions of the human RASSF1A gene. Hypermethylated RASSF1A promoter is observed in primary tumors. Furthermore, RASSF1A is related with cell cycle regulation, apoptosis and microtubule stability.

### General References

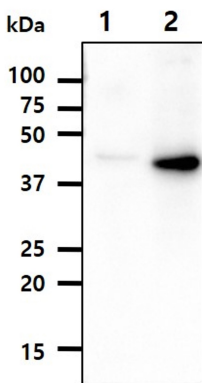
- Agathangelou A, et al., (2005) Cancer Res. 65, 3497-3508.  
Lerman Ml. et. al. (2000) Cancer Res. 60, 6116-6133.  
Strunnikova M. et al., (2005) Mol Cell Biol. 25, 3923-3933.  
Dammann R. et al., (2005) Histol Histopathol. 20, 645-663.  
Rossa W.k, et al., (2007) American Journal of pathology. 170, 941-950.

## DATA

### Western blot analysis (WB)



Cell lysate (40ug) was resolved by SDS-PAGE, transferred to PVDF membrane and probed with anti-human RASSF1A (1:500). Proteins were visualized using a goat anti-mouse secondary antibody conjugated to HRP and an ECL detection system.  
Lane 1.: HeLa cell lysate



Cell lysates (5ug) were resolved by SDS-PAGE, transferred to PVDF membrane and probed with anti-human RASSF1A (1:1000). Proteins were visualized using a goat anti-mouse secondary antibody conjugated to HRP and an ECL detection system.  
Lane 1.: 293T cell lysate  
Lane 2.: RASSF1A transfected 293T cell lysate

**For research use only. This product is not intended or approved for human, diagnostics or veterinary use.**

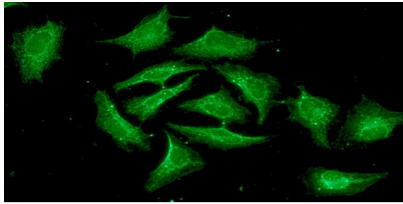
Manufactured for:  
Immuno-Biological Laboratories, Inc. (IBL-America)  
8201 Central Ave. NE, Suite P, Minneapolis, Minnesota 55432, USA  
Phone: (888) 523-1246 Fax.: (763) 780-2988  
Email: [info@ibl-america.com](mailto:info@ibl-america.com) Web: [www.ibl-america.com](http://www.ibl-america.com)

# Human RASSF1A antibody

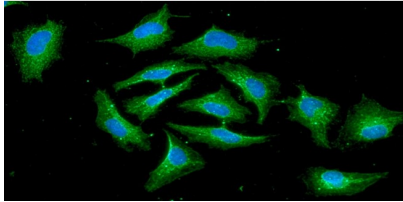
Catalog Number: IBARF0501



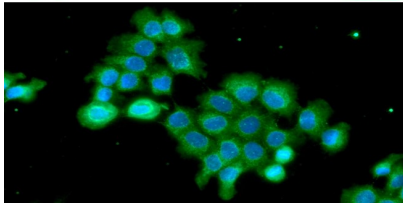
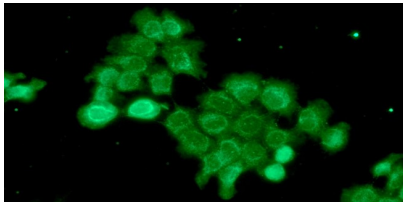
## Immunocytochemistry/Immunofluorescence (ICC/IF)



ICC/IF analysis of RASSF1A in HeLa cells. The cell was stained with ARF0501 (1:100). The secondary antibody (green) was used Alexa Fluor 488. DAPI was stained the cell nucleus (blue).



ICC/IF analysis of RASSF1A in A431 cells. The cell was stained with ARF0501 (1:100). The secondary antibody (green) was used Alexa Fluor 488. DAPI was stained the cell nucleus (blue).



---

**For research use only. This product is not intended or approved for human, diagnostics or veterinary use.**

*Manufactured for:*  
Immuno-Biological Laboratories, Inc. (IBL-America)  
8201 Central Ave. NE, Suite P, Minneapolis, Minnesota 55432, USA  
Phone: (888) 523-1246 Fax.: (763) 780-2988  
Email: [info@ibl-america.com](mailto:info@ibl-america.com) Web: [www.ibl-america.com](http://www.ibl-america.com)